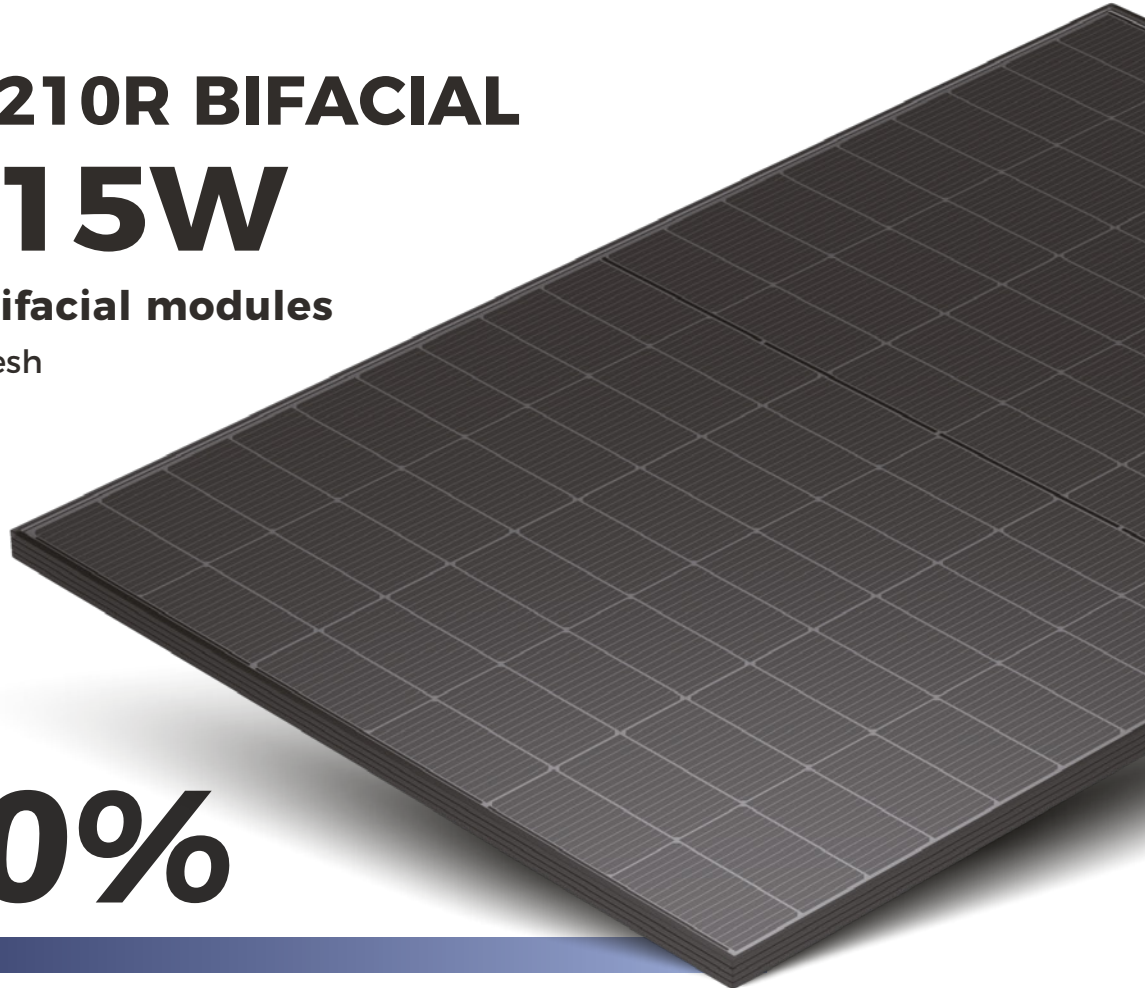


TOPCon 210R BIFACIAL 500-515W

High efficiency bifacial modules

· Black frame, Black mesh



 UTILITY

 C&I

Module efficiency

23.40%



Better leveled
cost of energy



Better high
temperature stability

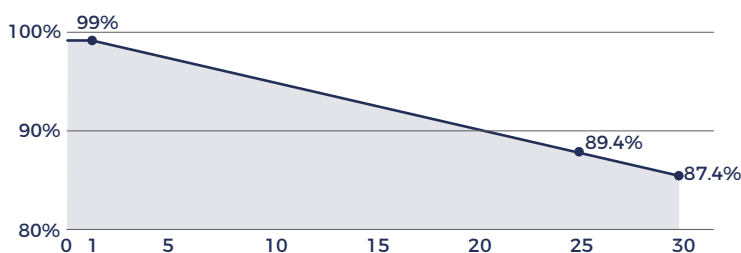


Improved low-light
performance



Excellent
bifacial performance

Linear performance guarantee for 30 years



WARRANTY

Quality
Guarantee **25**
years

Power
Warranty **30**
years

CERTIFICATE



Ariel Green



ELECTRIC CHARACTERISTICS

SPDG (500/515W)-N108R12

Model of modules	SPDG500-N108R12		SPDG505-N108R12		SPDG510-N108R12		SPDG515-N108R12	
	STC	NMOT	STC	NMOT	STC	NMOT	STC	NMOT
Power (Pmax/W)	500	378.10	505	382.20	510	386.40	515	390.30
Maximum power current (Vmp)	33.38	31.40	33.60	31.60	33.85	31.90	34.09	32.10
Maximum power current (Imp)	14.98	12.04	15.03	12.08	15.07	12.12	15.11	12.18
Open circuit voltage (Voc)	40.01	37.90	40.24	38.10	40.48	38.40	40.71	38.6
Short circuitcurrent (Isc)	15.83	12.75	15.88	12.79	15.93	12.83	15.98	12.87
Module efficiency	22.50%		22.72%		22.95%		23.17%	

STC (Electrical parameters at standard test conditions (STC:AM=1.5, 1000W/m² ,Cells Temperature25°C)

NMOT (Irradiance 800W/m², Ambient Temperature 20°C,AM1.5,Wind Speed 1m/s)

ELECTRICAL CHARACTERISTICS WITH 15% REAR SIDE POWER GAIN

Front power Pmax/W	575.00	580.75	586.50	592.25
Maximum power voltage (Vmp)	33.38	33.60	34.85	34.09
Maximum power current (Imp)	17.23	17.28	17.33	17.37
Open circuit voltage (Voc)	40.01	40.24	40.48	40.71
Short circuitcurrent (Isc)	18.20	18.26	18.32	18.38

STRUCTURAL CHARACTERISTICS

Module size (L*W*H)	1960x1134x30mm
Weight	26.6kg
Cell	108 cells,N type Mono-Crystalline , 182.2mm×105 mm
Front glass	2.0mm , Anti-Reflection Coating
Back glass	2.0mm , Heat Strengthened Glass
Frame	Anodized aluminum alloy
Junction box	IP68 , 3 bypass diodes
Output wire	4mm ²
Wire length	Line length 1300mm/customized
Connector	MC4 Compatible
Packing Specification	37 pcs/Pallet ; 888 pcs/40' HQ

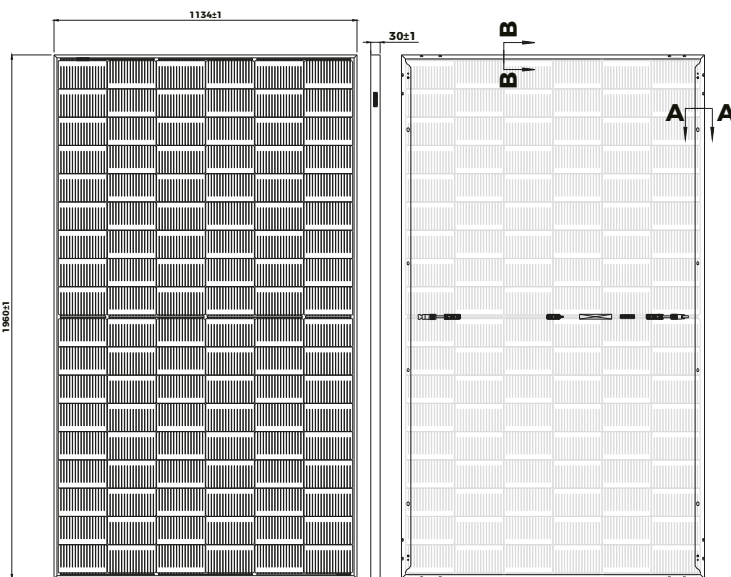
OPERATING PARAMETERS

Power tolerance (W)	(0~+5W)
Maximum system voltage (V)	1500V
Maximum rated fuse current (A)	30A
Current operating temperature (C)	-40~+85°C
Mechanical load	+5400Pa/-2400Pa

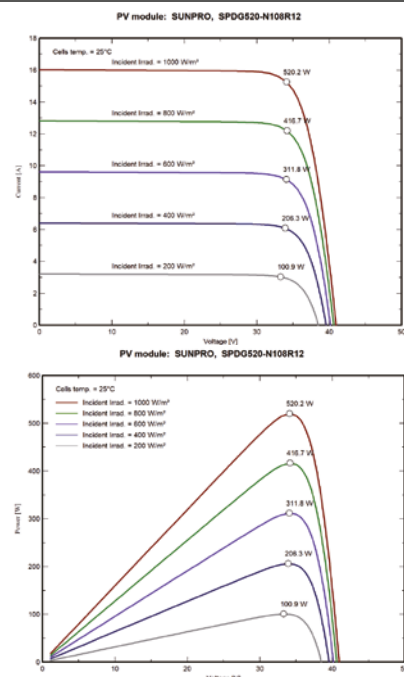
TEMPERATURE CHARACTERISTICS

Temp. Coeff. of Isc (TK Isc)	0.045% / °C
Temp. Coeff. of Voc (TK Voc)	-0.25% / °C
Temp. Coeff. of Pmax (TK Pmax)	-0.30% / °C
Normal Operting Cell Temperature	45±2°C

MODULE DIMENSIONS(MM)



I-V CHARACTERISTICS AT DIFFERENT IRRADIATION



Zhejiang Sunpro Power Technology Co., Ltd

Add.: Qinggang Industrial Zone, Yuhuan City, Zhejiang Province

Tel: +86 0576-80730906 E-mail: info@sunpropower.com Website: www.sunpropower.com

*The above parameters are for reference only, and the actual parameters of the factory shall prevail