

Hisense

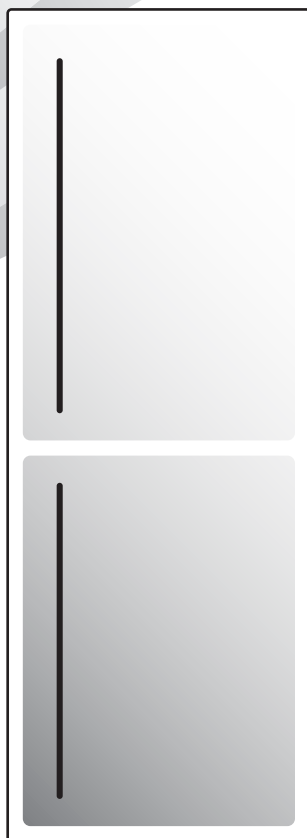
life reimagined

EN (GB) (IE)

INSTRUCTIONS FOR USE

OF A REFRIGERATOR WITH

FREEZER



THANK YOU FOR WELCOMING OUR APPLIANCE INTO YOUR HOME

We are happy that you have chosen a Hisense appliance. Hisense is here to empower you and all your adventures with our cutting-edge technology and modern home appliances made of high-quality materials. Because we are working tirelessly on energy efficiency, by purchasing our appliance, you too are contributing to more sustainable future.

For full use of our services, warranty and other important information, please consider to register your Hisense appliance online on our website:

<https://www.hisense-europe.com>

We hope our appliance will meet and exceed your expectations.

Link to the EU EPREL database


The QR code on the energy label supplied with the appliance provides a web link to the registration of this appliance in the EU EPREL database. Keep the energy label for reference together with the user manual and all other documents provided with this appliance. It is possible to find information related to the performance of the product in the EU EPREL database using the link <https://eprel.ec.europa.eu> and the model name and product number that you can find on the rating plate of the appliance. For more detailed information about the energy label, visit www.theenergylabel.eu.


The appliance is intended solely for household use.

The refrigerator is intended for storing fresh food at temperatures above 0°C.


The freezer is intended for freezing fresh food and for long-term storage of frozen food (up to one year, depending on the type of food).

The following symbols are used throughout the manual and they have the following meanings:

 **INFORMATION!**
Information, advice, tip, or recommendation

 **WARNING!**
Warning – general danger

 **ELECTRIC SHOCK!**
Warning – danger of electric shock

 **DANGER OF FIRE!**
Warning – danger of fire

Contents

Important notes and precautions	5
Before using the appliance for the first time	5
Important safety instructions	5
Important information on the use of appliance	7
Advice for saving power with refrigeration appliances	9
Installation and connection	10
Selecting the room	10
Appliance placement	10
Connecting the appliance	11
Reversing the door opening direction	12
Description of the appliance	17
Operating the appliance	18
Switching the appliance on/off	18
Adjusting the temperature in the appliance	19
Intensive freezing (freezer compartment)	20
Intensive cooling (refrigerator compartment)	20
Eco function(Recommended setting)	21
Wi-Fi function (Only in some models)	21
High temperature alarm	23
Open door alarm	23
Appliance interior equipment	24
AdaptTech	24
Air distribution system *	24
Slider for converting the low-temperature drawer into a fruit and vegetables drawer *	24
Low-temperature drawer *	24
Fruit and vegetable drawer with humidity control *	25
Bottle rack *	26
Shelf	26
Door racks	26
Recommended distribution of food in the appliance	27
Storing food in the refrigerator	28
Important warnings regarding food storage	28
Avoid contamination of food	28
Freezing and storing frozen food	29
Freezing procedure	29
Important warnings on freezing	29
Storing industrially frozen food	29
Frozen food storage time	29
Thawing frozen food	30
Defrosting the appliance (Total NoFrost)	31
Cleaning the appliance	32
Troubleshooting	33

Information about appliance noise	36
Environment protection	37
Compliance information	38
Spare parts	39

Important notes and precautions

Before using the appliance for the first time

Before connecting the appliance to the power mains, please read carefully the instructions for use which describe the appliance and its correct and safe use. The instructions apply to several appliance types/models; thus, settings or equipment may be described herein which is not available in your appliance. We recommend saving this instruction manual for future reference and attach it to the appliance if it is sold in the future.

Check for any damage or irregularities on your appliance. If you find your appliance is damaged, notify the retailer from which you have purchased the appliance.

Before connecting the appliance to the power mains, let the appliance rest in a vertical position for a minimum of 2 hours. This will reduce the possibility of operation faults due to the effect of transport on the cooling system.

Important safety instructions



DANGER OF FIRE!

WARNING! Risk of fire/flammable materials.

The appliance must be connected to the power mains and grounded in compliance with the effective standards and regulations.

WARNING! Do not locate multiple portable socket-outlets or portable power supplies at the rear of the appliance.

Before cleaning the appliance, unplug it from the power mains (unplug the power cord from the wall outlet).



ELECTRIC SHOCK!

WARNING! If the supply cord is damaged, it must be replaced by the manufacturer, its service agent or similarly qualified persons in order to avoid a hazard.



ELECTRIC SHOCK!

WARNING! When positioning the appliance, ensure the supply cord is not trapped or damaged.




ELECTRIC SHOCK!


If LED lighting does not work, call a service technician. Do not attempt a repair of the LED lighting yourself, as there is danger of contact with high voltage!



WARNING!

WARNING! Do not use electrical appliances inside the food storage compartments of the appliance, unless they are of the type recommended by the manufacturer.

 **WARNING!**
WARNING! Do not use mechanical devices or other means to accelerate the defrosting process, other than those recommended by the manufacturer.

 **WARNING!**
WARNING! To avoid any hazard resulting from poor stability of the appliance, make sure it is installed as instructed.

Freeze burn hazard

To avoid freeze burn, never put frozen food in your mouth and do not touch frozen food.

Safety of children and vulnerable persons

The appliance is not intended for use by persons (including children) with reduced physical, sensory or mental capabilities, or lack of experience and knowledge, unless they have been given supervision or instruction concerning use of the appliance by a person responsible for their safety.

Children should be supervised to ensure that they do not play with the appliance.

Cleaning and user maintenance shall not be made by children without supervision.

Remove the packaging intended to protect the appliance or particular parts during transport and keep it outside the reach of children. It presents danger of injury or suffocation.

When removing a used appliance, disconnect the power cord, remove the door, and leave the shelves in the appliance. This will prevent children from locking themselves in the appliance.

For European markets only

This appliance can be used by children aged from 8 years and above and persons with reduced physical, sensory or mental capabilities or lack of experience and knowledge if they have been given supervision or instruction concerning use of the appliance in a safe way and understand the hazards involved.

Children shall not play with the appliance.

Cleaning and user maintenance shall not be made by children without supervision.

Children aged from 3 to 8 years are allowed to load and unload refrigerating appliances.

Warning regarding the refrigerant

The appliance contains a small amount of an environmentally friendly yet flammable gas R600a. Make sure that no parts of the cooling system are damaged. A gas leak is not hazardous to the environment, but it could cause eye injury or fire.

In case of a gas leak, ventilate the room thoroughly, disconnect the appliance from the power mains, and call a service technician.

Important information on the use of appliance

WARNING! This appliance is intended to be used in household and similar applications such as:

- staff kitchen areas in shops, offices and other working environments;
- farm houses and by clients in hotels, motels and other residential type environments;
- bed and breakfast type environments;
- catering and similar non-retail applications.



WARNING!

WARNING! Keep ventilation openings, in the appliance enclosure or in the built-in structure, clear of obstruction.

The appliance may not be used outdoors and it may not be exposed to rain.

Do not store explosive substances such as aerosol cans with a flammable propellant in this appliance.

If the appliance will be out of use for an extended period of time, switch it off using the relevant button, and unplug it from the power mains. Empty the appliance, defrost it, clean it, and leave the door ajar.

In case of an error or power supply failure, do not open the freezer compartment unless the freezer has not operated for over 16 hours. After this period, use the frozen food or provide sufficient cooling (e.g. a replacement appliance).

Technical information on the appliance

Rating plate can be found in the appliance interior. It indicates data on voltage, gross and net volume, type and amount of refrigerant, and information on the climate classes.

If the language on the rating plate is not the language of your choice or the language of your country, replace it with the one supplied.



WARNING!

WARNING! Do not damage the refrigerant circuit.

Advice for saving power with refrigeration appliances

- Install the appliance as specified in the instruction manual.
- Do not open the door more often than necessary.
- Occasionally make sure air circulation underneath the appliance is unobstructed.
- If the gasket is damaged or does not provide a perfect seal for any reason, have it replaced as soon as possible.
- Store the food in tightly sealed containers or appropriate packaging.
- Before placing the food in the refrigerator, allow it to cool down to room temperature.
- Defrost frozen food in the refrigerator compartment.
- To make use of the entire freezer compartment interior volume, remove some of the drawers as described in the instruction manual.
- Make sure the layout of shelves in the compartment is uniform and that the food is placed so that the air can freely circulate in the appliance interior (observe the recommended placement of food as described in the instructions).

Installation and connection

Selecting the room

- Install the appliance in a dry and well ventilated room. The appliance will operate correctly if the environment temperature is in the interval specified in the table. The appliance class is indicated on the rating plate / label with the basic information on the appliance.

Description	Class	Ambient temperature range °C	Relative humidity
Extended temperate	SN	+10 to +32	≤75%
Temperate	N	+16 to +32	
Subtropical	ST	+16 to +38	
Tropical	T	+16 to +43	



INFORMATION!

This appliance is not intended to be used as a build-in appliance.



INFORMATION!

Do not place an appliance in a room where temperature can drop to below 5 °C as this may cause abnormal appliance operation or failure!

- After the installation, the appliance mains plug should be accessible!
- Do not place the appliance near appliances or devices radiating heat, such as a cooker, a stove, a radiator, water heater etc., and do not expose it to direct sunlight. The appliance should stand at least 3 cm away from an electric or gas cooker or at least 30 cm away from an oil or solid fuel stove. If the distance between such source of heat and the appliance is smaller, use an insulating panel.

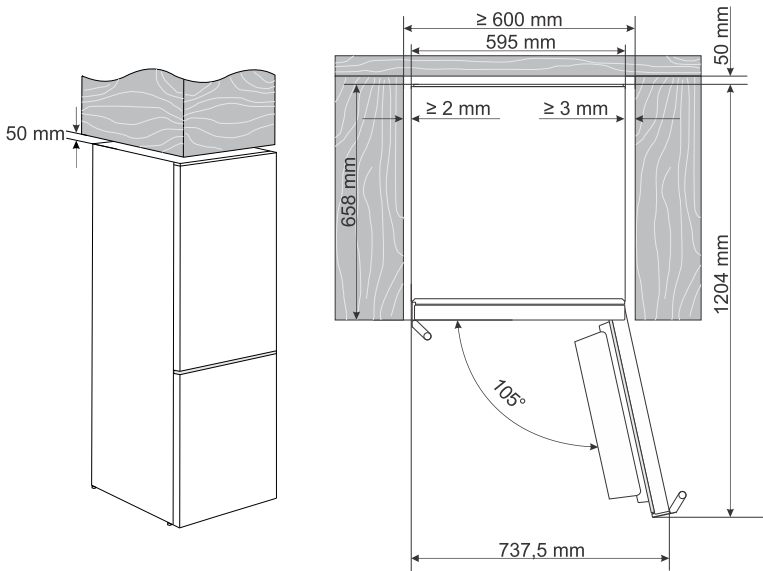
Note: Place the appliance in a sufficiently large room. There should be at least 1 m³ of space per 8 grams of refrigerant. Amount of refrigerant is indicated on the rating plate in the appliance interior.

Appliance placement

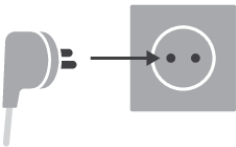
Appliance installation should be carried out by at least two persons to avoid any personal injury or damage to the appliance.

- The appliance must stand level or tilted slightly to the back. It should be stable and placed a solid base. At the front, the appliance is fitted with two adjustable feet that can be used to level the appliance. At the rear side, casters allow for easier installation of the appliance (only with some models).
- Do not expose the appliance to direct sunlight and do not place it near sources of heat. If this cannot be avoided, install an insulation panel.

- The appliance is intended for free-standing installation. To achieve optimum power consumption, always provide 50 mm of clearance between the wall and the back of the appliance and above the appliance. Also ensure sufficient air circulation next to and above the appliance.
- Take into account the space or clearance required to open the appliance door, in order to allow the drawers and shelves to be pulled out or removed (see installation diagram).



Connecting the appliance

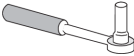



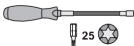


- Connect the appliance to the power mains using the power cord. The wall outlet should be fitted with a ground contact (safety socket). Nominal voltage and frequency are indicated on the rating plate/label with basic information on the appliance.
- The appliance must be connected to the power mains and grounded in compliance with the effective standards and regulations. The appliance will withstand short-term deviations from the nominal voltage, but not more than +/- 6%.

Reversing the door opening direction

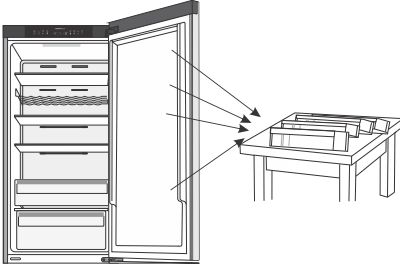
The direction in which the appliance door opens can be reversed.

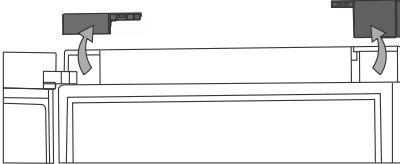
Note: Disconnect the appliance from the power mains before reversing the door opening direction.

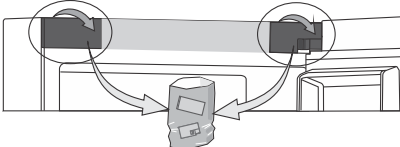
Tools required:	
	Socket wrench No. 8,
	Cross-point screwdriver
	Flat screwdriver
	Spanner No. 8
	Torx T25

Note:

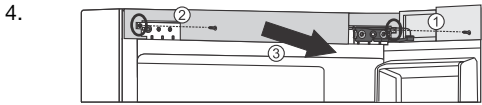
- If the appliance has to be tilted to allow access to parts on the bottom, ask another person for assistance or gently place the appliance on some soft padding to prevent damaging it. To reverse the opening direction, proceed as follows.

- 

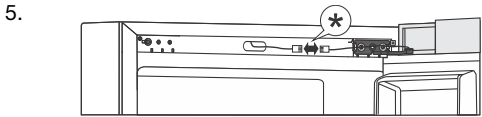
1. Place the appliance in an upright position. Open the top door and remove the door racks (to prevent damaging them during the procedure). Close the door.
- 

2. Remove the covers on each side of the upper door.
- 

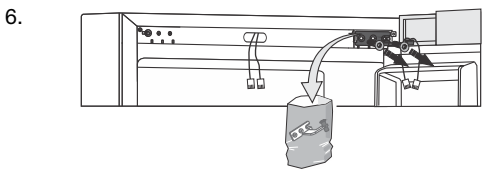
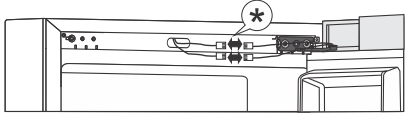
3. Then remove the covers on each side of the control unit. To do this, hold it up and pull it hard towards you. Put the covers away for future reference.



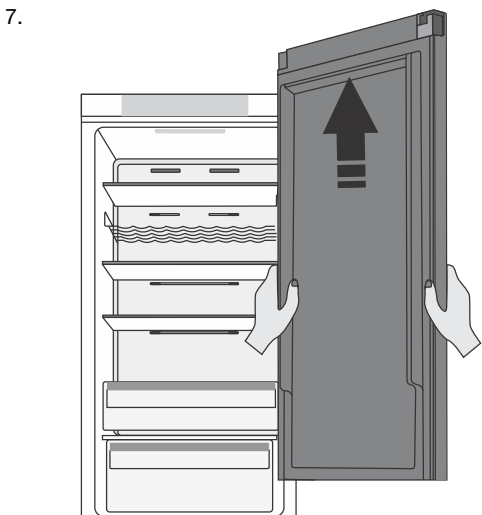
Unscrew the two screws on the left and right sides of the cover strip and remove it.



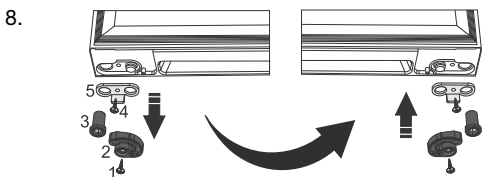
Disconnect the connector.
* depending on the model



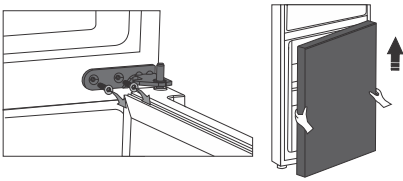
Then unscrew the top hinge and put it away for future reference.

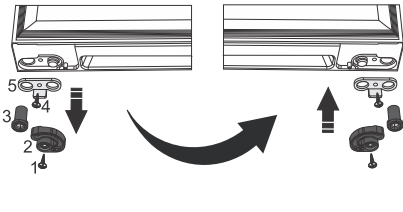


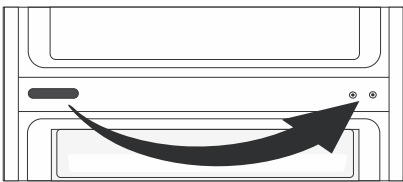
Remove the top door from the middle hinge by carefully lifting it straight up. Lay the door onto a smooth surface.



Changing the soft closing mechanism: unscrew the screw (1), remove the door latch (2) and the hinge bushing (3). Then unscrew the screw (4) and remove the door limiter (5). Then install all these components in reverse order on the opposite side of the door.

9.  Undo the screws from the middle hinge and remove it. Then, remove the bottom door from the bottom hinge.

10.  Repeat the process of changing the soft closing mechanism on the lower door, too. Unscrew the screw (1), remove the door latch (2) and the hinge bushing (3). Then unscrew the screw (4) and remove the door limiter (5). Then install all these components in reverse order on the opposite side of the door.

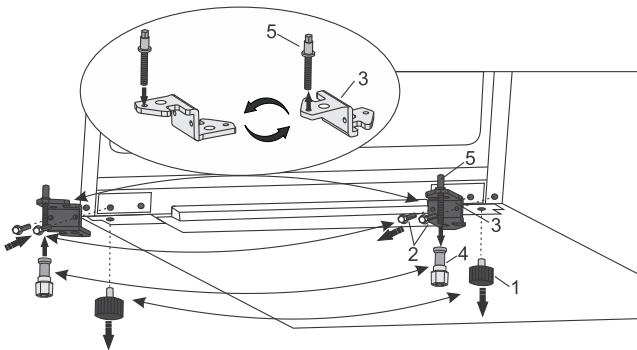
11.  Remove the middle hinge cap and replace it on the opposite side.

12. Tilt the appliance slightly backwards, unscrew the foot (1) and the two screws (2) with which the lower hinge (3) is attached and remove it. Then remove the extra foot (4) from the lower hinge and unscrew the cap (5). Rotate the hinge (3) by 180° and refasten the cap (5) and the extra foot (4). Attach the hinge and the foot to the opposite side.

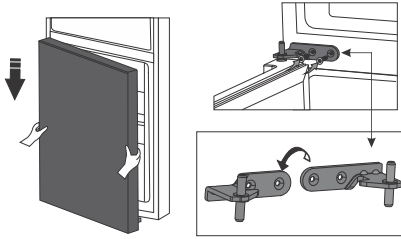


INFORMATION!

The extra foot (4) serves only to stabilise the appliance and is not intended to carry the weight of the appliance. When adjusting the foot (1) so that the appliance stands straight, lower the extra foot (4) only so that it touches the floor.

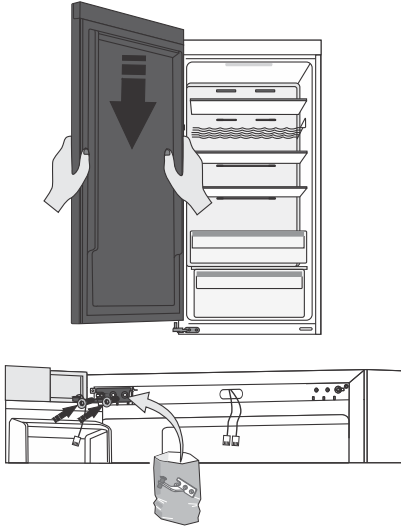


13.



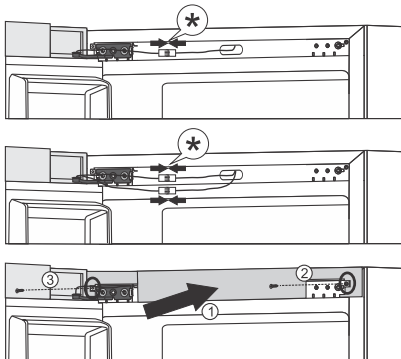
Place the bottom door onto the bottom hinge and hold them in place. Rotate the middle hinge by 180°. Place the washer in the correct position and adjust the position of the middle hinge so that you can install and fix the bottom door.

14.



Place the top door in the correct position and use the screws to attach the upper hinge, which you can find in the bag with documentation. Hold the top door in place while positioning them.

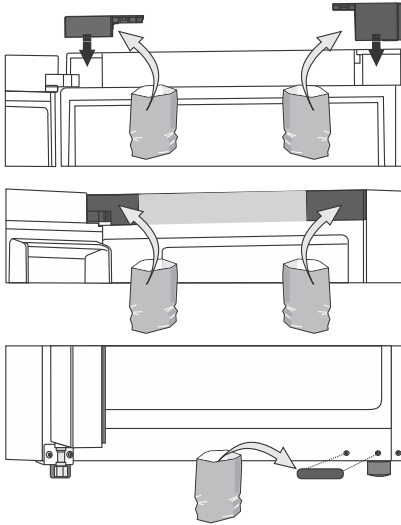
15.



Connect the connector and reattach the cover strip.

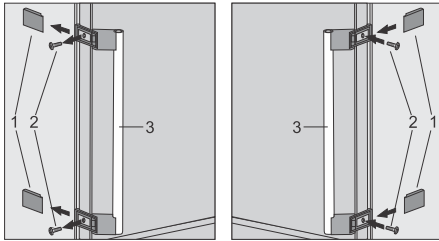
* depending on the model

16.



Install the upper door covers first, then the covers on each side of the cover strip and lastly the cover of the lower hinge holes, which you can find in the bag with documentation.

17. Open the top door and replace the door rack; then, close the door.



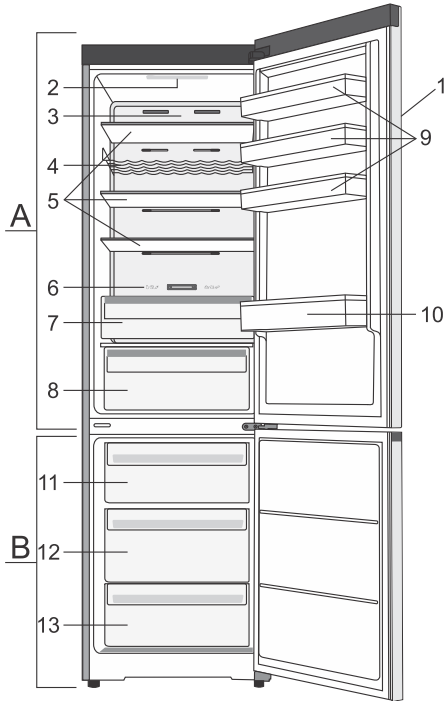
Note: If your model has a handle, then move it to the opposite side by following the instructions below.

Remove the caps (1) and undo the two screws (2) as shown in the figure. Rotate the handle (3) by 180° and replace it on the opposite side. Then, fasten the screws (2) and replace the caps (1).

Description of the appliance

Appliance interior equipment may change according to the appliance model.

This product contains a light source of energy efficiency class G.



A Refrigerator

1. Control panel
2. LED lighting
3. Air distribution system
4. Bottle rack *
5. Glass shelves
6. Slider for converting the low-temperature drawer into a fruit and vegetables drawer *
7. Low-temperature drawer *
8. Fruit and vegetable drawer with humidity control *
9. Low door racks
10. Bottle shelf

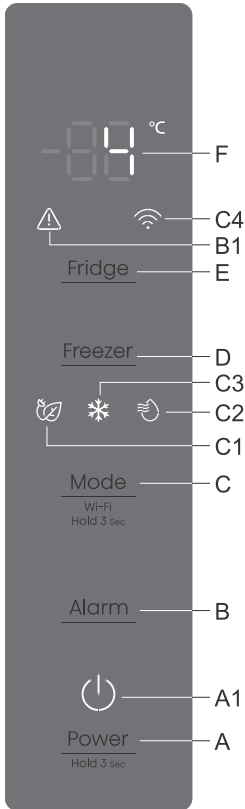
B Freezer

11. Top freezing and storage drawer
12. Deep SpaceBox drawer for freezing and storage
13. Bottom storage drawer

* Only in some models

- The drawers are fitted with a system that prevents them from being unintentionally pulled out. To remove a drawer from the appliance, pull it out as far as it will go, then lift at the front and pull out completely.

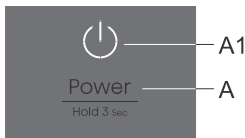
Operating the appliance



- A** Appliance on/off key
- A1** Appliance operation indicator
- B** Acoustic alarm off key
- B1** Alarm operation indicator
- C** Additional functions on/off key
- C1** Eco function indicator
- C2** Intensive cooling (super cool) function indicator
- C3** Intensive freezing (fast freeze) function indicator
- C4** Wi-Fi function indicator (Only available in some models)
- D** Key for setting the freezer compartment temperature
- E** Refrigerator compartment temperature setting key
- F** Display

Switching the appliance on/off

When you connect the appliance to the power mains for the first time, the appliance will be in standby mode (switched off, but powered).



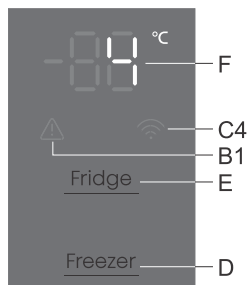
To switch on the appliance press A key for 3 seconds.

Switching off the appliance: switch off the appliance by pressing the **A** key and holding it (for 3 seconds). The appliance will switch to standby mode (it remains powered).

Adjusting the temperature in the appliance

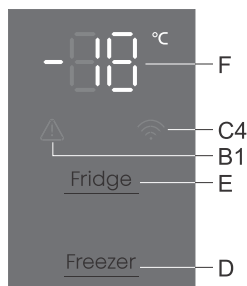
INFORMATION!

- Appliance temperature is preset at the factory to the recommended setting, i.e. 4°C for the refrigerator compartment and -18°C for the freezer compartment.
- After the appliance is switched on, it may take several hours for the set temperature to be reached. Do not place any food into the refrigerator before the temperature drops to the selected setting.



The temperature in **the refrigerator compartment** can be set with the **E** key. Press the **E** key until the **F** display shows the desired temperature.

- The temperature in the refrigerator compartment can be set in the range from +2 °C to + 8 °C.
- Each time you press the **E** key you reduce the setting by 1 °C. After three seconds of inactivity, the setting is automatically saved as the last set temperature of the refrigerator compartment.
- Recommended temperature setting is 4°C.

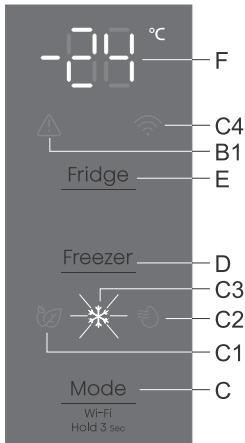


The temperature in **the freezer compartment** can be set with the **D** key. Press the **D** key until the **F** display shows the desired temperature.

- The temperature in the freezer compartment can be set in the range from -14°C to -24°C.
- Each time you press the **D** key you reduce the setting by 1 °C. After three seconds of inactivity, the setting is automatically saved as the last set temperature of the freezer compartment.
- Recommended temperature setting is -18°C.

Intensive freezing (freezer compartment) (❄️)

- Use this setting after switching on the appliance for the first time, before cleaning, or before inserting a large amount of food.



Power on: switch on the intensive freezing mode by pressing the key **C** as many times as it takes for the display to show **C3**. The display shows **-24**.

Power off: switch off the intensive freezing mode by pressing the **C** key again until the symbol **C3** turns off. The function will also be deactivated when you change the freezer compartment temperature setting, or when you activate any of the other extra functions.

If the setting is not deactivated manually, it will be deactivated automatically (after about 52. hours). The setting returns to the last saved state.

💡 INFORMATION!

- When the intensive freezing (fast freeze) function is activated, the appliance will operate with maximum power. During this time, operation may be temporarily somewhat louder.

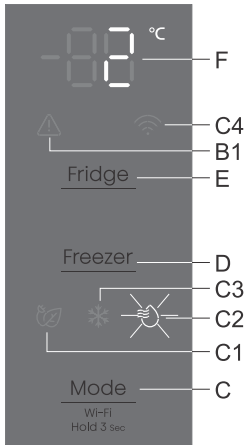
💡 INFORMATION!

- When the intensive freezing (fast freeze) function is activated, temperature may be lower both in the refrigerator and the freezer compartment.

Intensive cooling (refrigerator compartment) (🌬️)

💡 INFORMATION!

Use this setting after switching on the appliance for the first time, before cleaning, or before inserting a large amount of food.

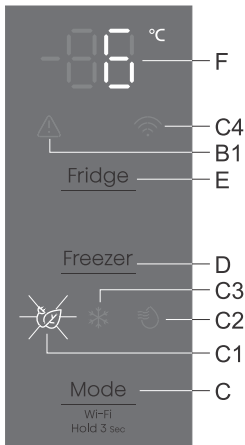


Power on: switch on the intensive cooling mode by pressing the **C** key as many times as it takes for the display to show **C2**. The display shows **2**.

Power off: switch off the intensive cooling mode by pressing the **C** key again until the symbol **C2** turns off. The function will also be deactivated when you change the refrigerator compartment temperature setting, or when you activate any of the other extra functions.

If the setting is not deactivated manually, it will be deactivated automatically (after about six hours). The setting returns to the last saved state.

Eco function (🌿) (Recommended setting 👍👌)



Power on: turn on the **Eco** function by pressing the **C** key as many times as it takes for the display to show **C1**. By turning on the **Eco** function, the refrigerator compartment is set to +6 °C and the freezer compartment to -17 °C.

Power off: the **Eco** function can be switched off by pressing the **C** key again until the symbol **C1** goes out.

The **Eco** function will also be deactivated when you change the refrigerator or freezer compartment temperature setting, or when you activate any of the other extra functions.

Wi-Fi function (Only in some models)

You can control this device remotely with your smartphone. If the device is not connected to your home network, it functions in the same way as a conventional device.



Connecting your appliance to the application **ConnectLife**

ConnectLife it is a smart home platform that connects people, devices, and services. The **ConnectLife** application includes advanced digital services and carefree solutions that allow users to monitor and control appliances, receive notifications from a smartphone, and update software (supported features vary depending on your appliance and your region/country).

To connect your smart device, you need a home Wi-Fi network (only 2.4 GHz networks are supported) and a smartphone with the application **ConnectLife**.



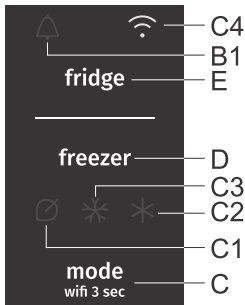
To download the **ConnectLife** application, scan the QR code or search for **ConnectLife** in your favorite app store.

1. Install the **ConnectLife** application and create an account.
2. In the **ConnectLife** application, go to the "Add device" menu and select the appropriate type of device. Then scan the QR code (it can be found on the rating plate of the appliance; you can also enter the AUID/SN code manually).
3. The application then guides you through the entire process of connecting the appliance to your smartphone.
4. After a successful connection, the appliance can be operated remotely via the mobile application.

Do you have more questions? Visit us at www.connectlife.io or contact us at hello@connectlife.io.

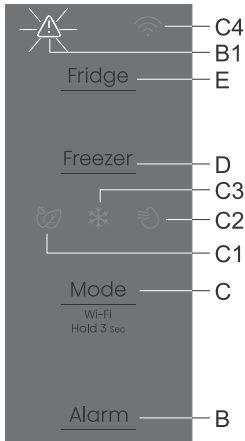
Canceling all pairings

By activating this function, the appliance will be removed from all paired app user accounts.



- Press the **C** key and hold it (6 seconds) until the appliance beeps twice. The following symbol starts to flash **C4**.
- The function will terminate automatically after successful removal of all pairings in the cloud. The symbol **C4** will turn off.

High temperature alarm



If the temperature inside the appliance is too high, an acoustic alarm will be activated (intermittent tone) and the display will show **B1**.

- Every time the appliance is switched on with the **A** key, there is a 24-hour delay in high temperature alarm operation. If the appliance does not reach the sufficiently low temperature in this period, the alarm will be activated.

Switching off the alarm:

- To acknowledge and switch off the acoustic alarm, press the **B** key.
- When the appliance reaches an adequate temperature, the display **B1** will turn off.

Open door alarm

If the refrigerator compartment door is open for too long, an acoustic alarm (repetitive beep) will be activated.

To switch off the alarm: to switch off the alarm, close the appliance door.

Appliance interior equipment

(* Equipment depends on the model)

AdaptTech

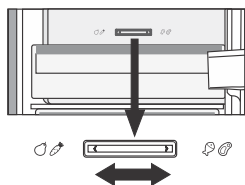
This smart system has been designed to maintain a constant temperature in the refrigerator, regardless of how often its doors are opened. It constantly monitors the use of your refrigerator and manages the temperature to prevent possible temperature increases, thus ensuring the long-term freshness of your food and reducing energy consumption.

Air distribution system *

The advanced ventilation system evenly distributes the air and equalises the temperature throughout the entire cooling section. It also ensures optimal air circulation and the best conditions for storing your food.

Slider for converting the low-temperature drawer into a fruit and vegetables drawer *

- If you find you need extra space for your fruit and vegetables, you can turn your low-temperature drawer into a fruit and vegetables drawer.



- To do this, use the slider as follows:
 - to use the drawer as a **low-temperature drawer**: push the slider to the right.
 - To use the drawer as a **fruit and vegetables drawer**: move the slider to the left.

Low-temperature drawer *

(Only in some models)

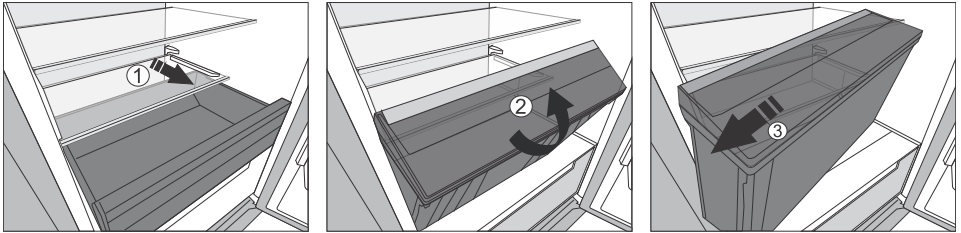
The compartment allows storing a wide variety of fresh food for up to three times longer than in a conventional refrigerator. The food stays fresh longer, retaining its flavour and nutrients. The temperature in this drawer depends on the temperature settings in the refrigerator compartment, ambient temperature, frequency of door opening, and amount of food placed in it.

For a temperature around 0 °C in the drawer, we recommend setting the refrigerator compartment temperature to 4 °C or lower. Temperature in the drawer may fall below 0 °C. Therefore, place the temperature-sensitive food in the upper parts of the refrigerator.

For optimum performance, the drawer should be fully closed.

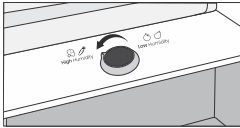
- When buying food, make sure it is fresh as this will determine the quality of the food, as well as how long it will keep in the fridge.
- Store the food in closed containers or appropriate packaging to prevent them from emitting or receiving odours and humidity.
- Take the food from the drawer 30 to 60 minutes before use to allow the aroma and flavour develop at room temperature.

- Foods sensitive to low temperature that are not appropriate for storage in the drawer include the following: pineapples, avocado, bananas, olives, potatoes, eggplant, cucumbers, beans, peppers (capsicum), melons, watermelons, squash...
- To remove the drawer:
 - Pull out the drawer until it is blocked.
 - Lift it at the front and pull out completely.

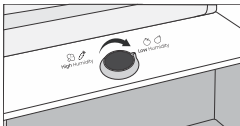


Fruit and vegetable drawer with humidity control *

- The drawer at the bottom of the refrigerator is intended for storing fruit and vegetables. It provides humidity and prevents the food from drying out. The drawer has a humidity regulator which allows setting the humidity level.

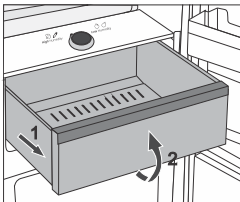


Position of the button towards High Humidity: higher humidity in the drawer.



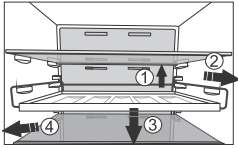
Position of the button towards Low Humidity: lower humidity in the drawer.

If you observe droplets accumulating below the glass shelf, open the vents and wipe the shelf (see chapter TROUBLESHOOTING).



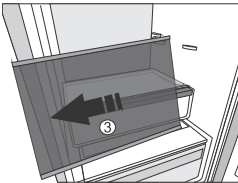
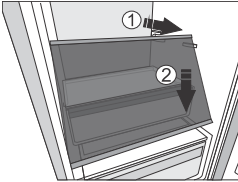
- Pulling out the bin:
 - Pull out the bin as far as it will go. Then, lift the front part and pull it out completely.

Bottle rack *



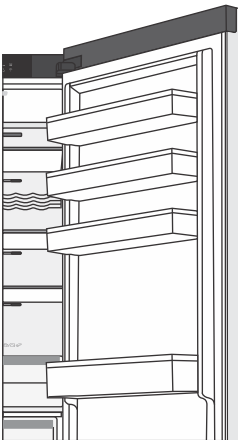
- Some models also feature a bottle holder. It is protected against being inadvertently pulled out. It can only be pulled out when it is empty. To pull it out, lift it slightly at the rear, pull it towards you, apply some downward pressure at the front and pull the holder out of the appliance.
- Cans may also be placed on the bottle rack (lengthwise or crosswise).

Shelf



Empty shelves can be rearranged as you see fit across the guides in the appliance interior. To move or remove them from the appliance, slightly lift them at the back, pull them towards you, push them down at the front and then move or pull them out of the appliance. Store quickly perishable food at the back of the shelf where the temperature is the lowest.

Door racks



Interior side of the refrigerator door is fitted with shelves intended for storing cheese, butter, eggs, yoghurt, and other smaller packages, tubes, cans etc.

You may lay out the racks as desired by lifting them slightly from the grooves that hold them in place and moving them to the desired spot, making sure to fit them in the grooves there.

The bottom rack is intended for storing bottles.

Maximum load on each door shelf is 5 kg.

Recommended distribution of food in the appliance

Sections in the refrigerator compartment:

- upper part: canned food, bread, wine, pastry ...
- middle part: dairy products, ready-made meals, desserts, soft drinks, beer, cooked food, etc.
- low-temperature drawer: meat, meat produce, delicatessen...
- fruit and vegetable bin: fresh fruit, vegetables, lettuce, root vegetables, onions, garlic, sauerkraut, turnips...



Sections in the refrigerator compartment door:

- upper/middle door bins: eggs, butter, cheese, etc.
- lower door bins: beverages, cans, bottles, etc.



INFORMATION!

Do not store fruit (bananas, pineapples, papaya, citrus) and vegetables (zucchini, eggplant, cucumbers, bell peppers, tomatoes, and potatoes) sensitive to low temperatures in the refrigerator.

Freezer sections:

- freezing, storing frozen food (see chapter Freezing and storing frozen food).



INFORMATION!

Do not store the following in the freezer: lettuce, eggs, apples, pears, grapes, peaches, yoghurt, soured milk, sour cream, and mayonnaise.

Storing food in the refrigerator

Important warnings regarding food storage

INFORMATION!

Correct use of the appliance, appropriate packaging, maintaining the right temperature, and observing the food hygiene standards have a decisive impact on the quality of food storage.

Observe the expiry dates for the food, indicated on the packaging.

Food stored in the refrigerator should be kept in closed containers or in appropriate packaging to prevent it from emitting or receiving odours and humidity.

Do not store inflammable, volatile, and explosive substances in the refrigerator.

Bottles with high alcohol content should be tightly sealed and stored in an upright position.

Some organic solutions, essential oils in lemon and orange peel, butter acid, etc. may damage the plastic surfaces in case of a prolonged contact, causing damage and premature ageing of these materials.

Unpleasant odour warns of lacking cleanliness of the appliance or perished contents (see chapter Cleaning the Appliance).

If you are leaving home for a longer period of time, remove perishables from the refrigerator.

Avoid contamination of food

To avoid contamination of food, please respect the following instructions:

- Opening the door for long periods can cause a significant increase of the temperature in the compartments of the appliance.
- Regularly clean surfaces that can come in contact with food and accessible drainage systems.
- Store raw meat and fish in suitable containers in the refrigerator, so that it is not in contact with or drip onto other food.
- If the refrigerating appliance is left empty for long periods, switch off, defrost, clean, dry, and leave the door open to prevent mould developing within the appliance.

Freezing and storing frozen food

Freezing procedure

INFORMATION!

Maximum amount of fresh food that may be inserted at once is specified on the appliance rating plate. If the amount of food to be frozen exceeds the indicated amount, the quality of freezing will be inferior; in addition, the quality of the food already frozen will deteriorate.

- Activate the super freeze function 24 hours before freezing fresh food:
 - switch on the intensive freezing mode by pressing **F**.
- To make sure the food freezes as quickly as possible, lay out the packages as described below:
 - Pack fresh food in smaller packages (1 kg). Place four packages in the top drawer, one in each corner of the drawer, and one package in the bottom drawer, centred against the back wall.

Make sure the fresh food is not in contact with the food that is already frozen.

- When freezing smaller amounts of food (1-2 kilograms), activating the super freeze function is not required.

Important warnings on freezing

INFORMATION!

Only use the freezer to freeze food appropriate for freezing. Always use quality and fresh food.

Select the most suitable packaging for the food and use the packaging correctly.

Make sure the packaging is air and water tight so that the food does not dry out and lose its vitamins.

Indicate the type of food, amount, and date of freezing on the packaging.

It is important that the food freezes quickly. Therefore, smaller packages are recommended. Refrigerate the food before freezing.

Storing industrially frozen food

- When storing and using frozen food, observe the manufacturer's instructions. Temperature and expiry date are indicated on the packaging.
- Only choose food with undamaged packaging, stored in freezers at temperatures of -18°C or lower.
- Do not purchase food covered in frost as this indicates it has been partly thawed several times and that it is of inferior quality.
- Protect the food from thawing during transport. In case of an increase in temperature, storage time will be shorter and quality will deteriorate.

Frozen food storage time

Recommended storage time in the freezer

Type of food	Storage life
Fruit, beef	from 10 to 12 months

Table continued from last page

Type of food	Storage life
Vegetables, veal, poultry	from 8 to 10 months
Venison	from 6 to 8 months
Pork	from 4 to 6 months
Finely chopped or minced meat	4 months
Bread, pastas, cooked dishes, whitefish	3 months
Offal	2 months
Smoked sausage, bluefish	1 month

Thawing frozen food

- Thawing is an important step in storing food preserved by freezing. Food must be thawed in the correct way.
- Suitable methods of thawing food are:
 - in the refrigerator;
 - in cold water;
 - in a microwave or conventional oven with a suitable thaw program.
- Some frozen products can be prepared without needing to thaw them first. The manufacturer will state this on the packaging.
- The food needs to be packed in small portions. In this way the food thaws faster.
- Use partially or completely thawed food as quickly as possible. The bacteria in thawed food are reactivated and the food will spoil rapidly. This applies in particular to fruit, vegetables and ready-made food.
- Do not refreeze partially or completely thawed food.

Defrosting the appliance (Total NoFrost)

The modern Total NoFrost technology in the freezer compartment prevents the formation of ice and the accumulation of frost on foods, thus enabling economical operation, greater transparency and full use of space.

In the refrigerator compartment, it prevents food from drying out, as it maintains its humidity and freshness.

Defrosting of the refrigerator and freezer compartment is automatic, eliminating the need for time-consuming manual defrosting and cleaning.

Cleaning the appliance



WARNING!

Before cleaning, unplug the appliance from the power mains – switch off the appliance (see chapter Switching the Appliance On/Off) and unplug the power cord from the wall outlet.

- Use a soft cloth to clean all surfaces. Cleaners that contain abrasive substances, acids, or solvents are not suitable for cleaning as they may damage the surface.

Clean the appliance exterior with water or a mild solution of suds.

Lacquer-coated and aluminium surfaces may be cleaned with lukewarm water to which you have added a mild detergent. Use of cleaners with low alcohol content is allowed (e.g. window cleaners). Do not use cleaners containing alcohol for cleaning plastic materials.

Appliance interior can be cleaned with lukewarm water to which you can add some vinegar.

- Do not wash the parts of appliance interior equipment in a dishwasher as they may be damaged.
- After cleaning, switch the appliance back on and insert the food.

Troubleshooting

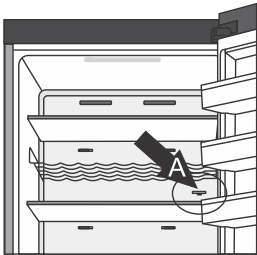
Problem:	Cause or remedy:
Appliance is connected to the power mains but it does not work.	<ul style="list-style-type: none"> • Make sure there is voltage in the power outlet and that the appliance is switched on.
Cooling system operates continuously for a long period of time: 	<ul style="list-style-type: none"> • Too high environment temperature. • Door opened too frequently or too long. • Door not closed correctly (possible impurities on the seal, misaligned door, damaged seal etc.). • Too much fresh food inserted at once. • Sensor in the refrigerator (A) blocked by fresh food. Make sure the air can circulate around the sensor (only with some models).
Excessive build-up of ice on the back wall of refrigerator interior can be a result of the following:	<ul style="list-style-type: none"> • door opened too frequently or too long. • Warm food placed in the refrigerator. • Food or containers in contact with the back interior wall of the refrigerator. • Poor door sealing. • If the seal is dirty or damaged, clean or replace it.
Build-up of ice or frost in the freezer interior:	<ul style="list-style-type: none"> • The door has been opened for too long or too frequently. • The door is not properly closed. • The door has a poor seal (the gasket is dirty, the door is not properly aligned, the gasket is damaged etc.). • Manually defrost the appliance.
Condensate (dew) on the shelf above the drawers:	<ul style="list-style-type: none"> • This is transient phenomenon which cannot be entirely avoided in periods of high environment temperature and humidity. It subsides when temperature and humidity are normalized. We recommend cleaning the drawers more frequently and wiping the droplets occasionally. • Open the humidity control slider. • Put food in bags or other packaging with a good seal.
Droplets on the refrigerator compartment back wall.	<ul style="list-style-type: none"> • This is normal. The refrigerator compartment is defrosted automatically, which results in droplets of water that flows through an opening in the refrigerator compartment back wall into a tray above the compressor unit, from which it evaporates.

Table continued from last page

Problem:	Cause or remedy:
Water is dripping/leaking from the refrigerator:	<ul style="list-style-type: none"> • Clogged water discharge opening or water dripping past the water gutter. • Clean the blocked opening, e.g. using a plastic straw. • If a thick layer of ice builds up, defrost the appliance manually (see Defrosting the Appliance).
Door is difficult to open:	<ul style="list-style-type: none"> • If you are trying to open the freezer door after just having closed it, this could be difficult to do. As you open the door, some cool air escapes from the appliance and it is replaced by warm air from the environment. When this air is cooled, negative pressure is generated which results in problems as you try to open the door. After a few minutes, the condition is normalized and the door can be easily opened again.
Appliance sides are warm:	<ul style="list-style-type: none"> • This is normal. There are pipes and tubes installed in the appliance sides, which tend to heat up during appliance operation.
LED lighting does not work:	<ul style="list-style-type: none"> • If LED lighting does not work, call a service technician. • Do not attempt a repair of the LED lighting yourself, as there is danger of contact with high voltage!
The display shows C1:	<ul style="list-style-type: none"> • The error C1 is displayed if the freezer compartment door is open for more than 10 minutes. To eliminate the error, close the door. If, despite the door being closed, the error C1 is still displayed, a door sensor failure has occurred. Call a service centre to fix the problem.
The display shows C2:	<ul style="list-style-type: none"> • The error C2 is displayed if the refrigerator compartment door is open for more than 10 minutes. To eliminate the error, close the door. If, despite the door being closed, the error C2 is still displayed, a door sensor failure has occurred. Call a service centre to fix the problem.
The display shows C3:	<ul style="list-style-type: none"> • The error C3 is displayed if the refrigerator and freezer compartment doors are open for more than 10 minutes. To eliminate the error, close the door. If, despite the door being closed, the error C3 is still displayed, a door sensor failure has occurred. Call a service centre to fix the problem.
Er or Ec will appear on the display unit:	<ul style="list-style-type: none"> • The touch keys do not respond. Call a service centre for repair. • Until the appliance is repaired by a service technician, the appliance will operate in safe mode. The appliance will automatically preserve the most suitable temperature for each compartment.

Table continued from last page

Problem:	Cause or remedy:
E0 will appear on the display unit:	<ul style="list-style-type: none"> Ambient temperature sensor is malfunctioning. Call a service center to fix the problem. The appliance will operate in safe mode until it is repaired by a service technician. The appliance will automatically maintain the most suitable temperature for each compartment.
E1 will appear on the display unit:	<ul style="list-style-type: none"> The temperature sensor of the refrigerator is defective. Call a service centre to fix the problem. The appliance will operate in safe mode until it is repaired by a service technician. The appliance will automatically maintain the most suitable temperature for each compartment.
E2 will appear on the display unit:	<ul style="list-style-type: none"> Evaporator sensor of the refrigerator is malfunctioning. Call a service center to fix the problem. The appliance will operate in safe mode until it is repaired by a service technician. The appliance will automatically maintain the most suitable temperature for each compartment.
E3 appears on the display unit:	<ul style="list-style-type: none"> The temperature sensor of the freezer is malfunctioning. Call a service centre to fix the problem. The appliance will operate in safe mode until it is repaired by a service technician. The appliance will automatically maintain the most suitable temperature for each compartment.
E4 appears on the display unit:	<ul style="list-style-type: none"> The evaporator sensor of the freezer compartment is defective. Call a service centre to fix the problem. The appliance will operate in safe mode until it is repaired by a service technician. The appliance will automatically maintain the most suitable temperature for each compartment.
En will appear on the display unit:	<ul style="list-style-type: none"> The WiFi module is malfunctioning. Call a service centre to fix the problem.
F0 will appear on the display unit:	<ul style="list-style-type: none"> The condenser fan is malfunctioning. Call a service centre to fix the problem. The appliance cannot operate normally. Transfer the food to a cool place and switch off the appliance.
F1 or F2 appears on the display unit:	<ul style="list-style-type: none"> Compartment fan failure. Call a service centre for repair. The appliance cannot operate normally. Transfer the food to a cool place and switch off the appliance.

If the above tips do not resolve your problem, call the nearest authorized service centre and state the type, model, and serial number indicated on the appliance rating plate or label located in the appliance interior.

Information about appliance noise

Cooling in refrigerators and freezers is made possible by a refrigeration system with a compressor (and, in some appliances, fans and air dampers), which also generates some noise. The intensity of noise depends on the installation, correct use and age of the appliance.

- After the appliance is started, the compressor operation or the coolant flow during operation may be louder (buzzing, humming and liquid noises). This is not a sign of malfunction and does not affect the service life of the appliance. Over time, with the operation of the appliance, the volume of these noises decreases.
- NoFrost appliances periodically melt ice, and there may be knocking and squeaking noises due to ice falling into the drain chute and water dripping onto the defrost heater. Cracking noises may also occur due to expansion and contraction of various components due to major temperature changes. All these sounds are normal and do not affect the service life of the appliance.
- When closing the door, there may be a humming noise due to the pressure in the appliance equalising.
- Sometimes, unusual or loud noises may appear during appliance operation; these are mostly the result of improper installation:
 - The appliance must stand level and stable on a solid base.
 - The appliance may not be in contact with a wall or adjacent furniture.
 - Make sure the interior equipment sits firmly in its place and that the noise is not caused by rattling cans, bottles or other containers placed next to each other.
- Due to the higher workload on the cooling system when the door is opened more frequently or for a longer time, when a large amount of fresh food is introduced or when intensive freezing or cooling functions are activated, the appliance can temporarily generate more noise.

Environment protection

Packaging is made of environmentally friendly materials that can be recycled, disposed of, or destroyed without any hazard to the environment.

Removing an obsolete appliance

To protect the environment, take the obsolete appliance to an authorized home appliance collection centre.

Before doing so, do the following:

- disconnect the appliance from the power mains;
- do not allow children to play with the appliance.



■ The symbol on the product or its packaging indicates that the product should not be treated as normal household waste. The product should be taken to an authorized collection centre for waste electric and electronic equipment processing. Correct disposal of the product will help prevent any negative effects on the environment and health of people which could occur in case of incorrect product removal. For detailed information on removal and processing of the product, please contact the relevant municipal body in charge of waste management, your waste disposal service, or the store where you bought the product.

Compliance information

Radio equipment type:	MWB414C.07 MWB414S.12
Wi-Fi	
Operating frequency range:	2,412 GHz - 2,472 GHz
Maximum output power:	≤10 dBm/MHz (EIRP) (Antenna gain 10 dBi)
Maximum antenna gain:	Gain: -1,53 dBi
Bluetooth	
Frequency range:	2,402 GHz - 2,480 GHz
Carrier Output:	4 dBm (≤10 dBm)
Emission type:	F1D

Declaration of conformity

The company declares that the device with the function Connectlife complies with the essential requirements and other relevant provisions of Directive 2014/53/EU. The detailed Declaration of Conformity can be found at the web address <https://aud.connectlife.io> on the page of your device among the additional documents.

Spare parts

Spare parts for the appliance you have purchased are available for 10 years. During this time, original spare parts will be available to ensure the correct operation of your appliance.

The list of spare parts is available on the website:

https://partners.gorenje.com/GSD/gsd_public.aspx

Hisense UK Ltd

Ground floor, Munroe Court, White Rose Office Park,
Millshaw Park Lane, Leeds LS11 0EA

Hisense France SAS

Bâtiment Front Office 12 à 16 rue Sarah Bernhardt
92600 ASNIERES-SUR-SEINE

Hisense Gorenje Germany GmbH

Parkring 31-33, 85748 Garching b. München, Deutschland

Hisense Italia SRL

Via Montefeltro, 6/A 20156 Milano, Italia

Hisense Iberia SLU

C/ Botiguers, nº 5, Edificio B, 2ª planta
(46988) Paterna (Valencia-Spain)

GORENJE GOSPODINJSKI APARATI, d.o.o.

Partizanska cesta 12, SI-3320 Velenje, Slovenia

Hisense



937979-a1

CE