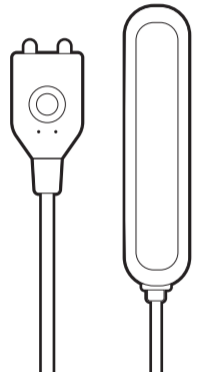


Water Sensor 7

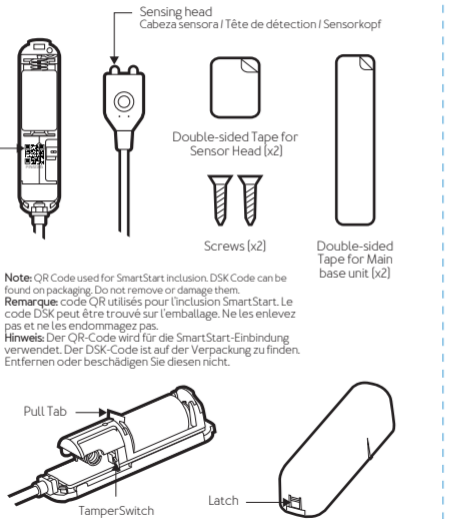
ZWA018



AEOTEC

Used in this guide.

Artículos utilizados en este manual / Utilisé dans ce guide / In dieser Gebrauchsanweisung verwendete Bezeichnungen.



Note: QR Code used for SmartStart inclusion. DSK Code can be found on packaging. Do not remove or damage them.
Remarque: code QR utilisés pour l'inclusion SmartStart. Le code DSK peut être trouvé sur l'emballage. Ne les enlevez pas et ne les endommagez pas.
Hinweis: Der QR-Code wird für die SmartStart-Einbindung verwendet. Der DSK-Code ist auf der Verpackung zu finden. Entfernen oder beschädigen Sie diesen nicht.

Important safety information.

Please read this and the online guide(s) at support.aeotec.com/lws7 carefully. Failure to follow the recommendations set forth by Aeotec Limited may be dangerous or cause a violation of the law. The manufacturer, importer, distributor, and / or reseller will not be held responsible for any loss or damage resulting from not following any instructions in this guide or in other materials.

To optimally detect water and leaks, Water Sensor 7 is intended for use in dry locations that then become wet.

Contains small parts; keep away from children.

Optimally placing Water Sensor 7.

The Main base unit of Water Sensor 7 should be placed in a dry location. It should be mounted vertically on a wall above the place where you wish to monitor for potential floods or leaks. It is the sensor probe of Water Sensor 7 that detects liquids, so the sensor probe must be placed in such a way that any drip or leak will come into contact with it. When placing Water Sensor 7 bes do also consider in which direction any flood or leak may flow and where one may occur.

Ensure that both of the probe contacts will be able to detect any leak or flood. It is only when both probes come into contact with a liquid that Water Sensor 7 will send a leak alert to your Z-Wave™ gateway.

Power Water Sensor 7.

To power up your Water Sensor 7 with the included CR14250 (½ AA) battery, follow these steps:

1. Press the open tab of your Water Sensor 7, then lift the case off.
2. Remove the plastic tab blocking connection of the CR14250 battery. The LED will blink its red LED 5 times when not connected to a hub when initially powered.
3. Leave the case open as you'll need to reach the tamper switch to connect it to your hub.

Water Sensor 7 uses CR14250 (½ AA) batteries rated at 3.0V.

Connecting Water Sensor 7 to hub.

- A. Aeotec AutoPilot:
 - a. Select DEVICES.
 - b. Select + Add new.
 - c. Select +.
 - d. Select + Add.
 - e. Tap the Tamper Switch 3x times in 1.5 seconds on Water Sensor 7; its LED will flash red / green while Water Sensor 7 attempts to connect.
- B. Aeotec Smart Home Hub or SmartThings:
 - a. Open SmartThings app.
 - b. Tap +.
 - c. Tap Device.

Power Water Sensor 7.

To power up your Water Sensor 7 with the included CR14250 (½ AA) battery, follow these steps:

1. Press the open tab of your Water Sensor 7, then lift the case off.
2. Remove the plastic tab blocking connection of the CR14250 battery. The LED will blink its red LED 5 times when not connected to a hub when initially powered.
3. Leave the case open as you'll need to reach the tamper switch to connect it to your hub.

Water Sensor 7 uses CR14250 (½ AA) batteries rated at 3.0V.

Connecting Water Sensor 7 to hub.

- A. Aeotec AutoPilot:
 - a. Select DEVICES.
 - b. Select + Add new.
 - c. Select +.
 - d. Select + Add.
 - e. Tap the Tamper Switch 3x times in 1.5 seconds on Water Sensor 7; its LED will flash red / green while Water Sensor 7 attempts to connect.
- B. Aeotec Smart Home Hub or SmartThings:
 - a. Open SmartThings app.
 - b. Tap +.
 - c. Tap Device.

Power Water Sensor 7.

To power up your Water Sensor 7 with the included CR14250 (½ AA) battery, follow these steps:

1. Press the open tab of your Water Sensor 7, then lift the case off.
2. Remove the plastic tab blocking connection of the CR14250 battery. The LED will blink its red LED 5 times when not connected to a hub when initially powered.
3. Leave the case open as you'll need to reach the tamper switch to connect it to your hub.

Water Sensor 7 uses CR14250 (½ AA) batteries rated at 3.0V.

Connecting Water Sensor 7 to hub.

- A. Aeotec AutoPilot:
 - a. Select DEVICES.
 - b. Select + Add new.
 - c. Select +.
 - d. Select + Add.
 - e. Tap the Tamper Switch 3x times in 1.5 seconds on Water Sensor 7; its LED will flash red / green while Water Sensor 7 attempts to connect.
- B. Aeotec Smart Home Hub or SmartThings:
 - a. Open SmartThings app.
 - b. Tap +.
 - c. Tap Device.

Power Water Sensor 7.

To power up your Water Sensor 7 with the included CR14250 (½ AA) battery, follow these steps:

1. Press the open tab of your Water Sensor 7, then lift the case off.
2. Remove the plastic tab blocking connection of the CR14250 battery. The LED will blink its red LED 5 times when not connected to a hub when initially powered.
3. Leave the case open as you'll need to reach the tamper switch to connect it to your hub.

Water Sensor 7 uses CR14250 (½ AA) batteries rated at 3.0V.

Connecting Water Sensor 7 to hub.

- A. Aeotec AutoPilot:
 - a. Select DEVICES.
 - b. Select + Add new.
 - c. Select +.
 - d. Select + Add.
 - e. Tap the Tamper Switch 3x times in 1.5 seconds on Water Sensor 7; its LED will flash red / green while Water Sensor 7 attempts to connect.
- B. Aeotec Smart Home Hub or SmartThings:
 - a. Open SmartThings app.
 - b. Tap +.
 - c. Tap Device.

Power Water Sensor 7.

To power up your Water Sensor 7 with the included CR14250 (½ AA) battery, follow these steps:

1. Press the open tab of your Water Sensor 7, then lift the case off.
2. Remove the plastic tab blocking connection of the CR14250 battery. The LED will blink its red LED 5 times when not connected to a hub when initially powered.
3. Leave the case open as you'll need to reach the tamper switch to connect it to your hub.

Water Sensor 7 uses CR14250 (½ AA) batteries rated at 3.0V.

Connecting Water Sensor 7 to hub.

- A. Aeotec AutoPilot:
 - a. Select DEVICES.
 - b. Select + Add new.
 - c. Select +.
 - d. Select + Add.
 - e. Tap the Tamper Switch 3x times in 1.5 seconds on Water Sensor 7; its LED will flash red / green while Water Sensor 7 attempts to connect.
- B. Aeotec Smart Home Hub or SmartThings:
 - a. Open SmartThings app.
 - b. Tap +.
 - c. Tap Device.

Power Water Sensor 7.

To power up your Water Sensor 7 with the included CR14250 (½ AA) battery, follow these steps:

1. Press the open tab of your Water Sensor 7, then lift the case off.
2. Remove the plastic tab blocking connection of the CR14250 battery. The LED will blink its red LED 5 times when not connected to a hub when initially powered.
3. Leave the case open as you'll need to reach the tamper switch to connect it to your hub.

Water Sensor 7 uses CR14250 (½ AA) batteries rated at 3.0V.

Connecting Water Sensor 7 to hub.

- A. Aeotec AutoPilot:
 - a. Select DEVICES.
 - b. Select + Add new.
 - c. Select +.
 - d. Select + Add.
 - e. Tap the Tamper Switch 3x times in 1.5 seconds on Water Sensor 7; its LED will flash red / green while Water Sensor 7 attempts to connect.
- B. Aeotec Smart Home Hub or SmartThings:
 - a. Open SmartThings app.
 - b. Tap +.
 - c. Tap Device.

Power Water Sensor 7.

To power up your Water Sensor 7 with the included CR14250 (½ AA) battery, follow these steps:

1. Press the open tab of your Water Sensor 7, then lift the case off.
2. Remove the plastic tab blocking connection of the CR14250 battery. The LED will blink its red LED 5 times when not connected to a hub when initially powered.
3. Leave the case open as you'll need to reach the tamper switch to connect it to your hub.

Water Sensor 7 uses CR14250 (½ AA) batteries rated at 3.0V.

Connecting Water Sensor 7 to hub.

- A. Aeotec AutoPilot:
 - a. Select DEVICES.
 - b. Select + Add new.
 - c. Select +.
 - d. Select + Add.
 - e. Tap the Tamper Switch 3x times in 1.5 seconds on Water Sensor 7; its LED will flash red / green while Water Sensor 7 attempts to connect.
- B. Aeotec Smart Home Hub or SmartThings:
 - a. Open SmartThings app.
 - b. Tap +.
 - c. Tap Device.

Power Water Sensor 7.

To power up your Water Sensor 7 with the included CR14250 (½ AA) battery, follow these steps:

1. Press the open tab of your Water Sensor 7, then lift the case off.
2. Remove the plastic tab blocking connection of the CR14250 battery. The LED will blink its red LED 5 times when not connected to a hub when initially powered.
3. Leave the case open as you'll need to reach the tamper switch to connect it to your hub.

Water Sensor 7 uses CR14250 (½ AA) batteries rated at 3.0V.

Connecting Water Sensor 7 to hub.

- A. Aeotec AutoPilot:
 - a. Select DEVICES.
 - b. Select + Add new.
 - c. Select +.
 - d. Select + Add.
 - e. Tap the Tamper Switch 3x times in 1.5 seconds on Water Sensor 7; its LED will flash red / green while Water Sensor 7 attempts to connect.
- B. Aeotec Smart Home Hub or SmartThings:
 - a. Open SmartThings app.
 - b. Tap +.
 - c. Tap Device.

Power Water Sensor 7.

To power up your Water Sensor 7 with the included CR14250 (½ AA) battery, follow these steps:

1. Press the open tab of your Water Sensor 7, then lift the case off.
2. Remove the plastic tab blocking connection of the CR14250 battery. The LED will blink its red LED 5 times when not connected to a hub when initially powered.
3. Leave the case open as you'll need to reach the tamper switch to connect it to your hub.

Water Sensor 7 uses CR14250 (½ AA) batteries rated at 3.0V.

Connecting Water Sensor 7 to hub.

- A. Aeotec AutoPilot:
 - a. Select DEVICES.
 - b. Select + Add new.
 - c. Select +.
 - d. Select + Add.
 - e. Tap the Tamper Switch 3x times in 1.5 seconds on Water Sensor 7; its LED will flash red / green while Water Sensor 7 attempts to connect.
- B. Aeotec Smart Home Hub or SmartThings:
 - a. Open SmartThings app.
 - b. Tap +.
 - c. Tap Device.

Power Water Sensor 7.

To power up your Water Sensor 7 with the included CR14250 (½ AA) battery, follow these steps:

1. Press the open tab of your Water Sensor 7, then lift the case off.
2. Remove the plastic tab blocking connection of the CR14250 battery. The LED will blink its red LED 5 times when not connected to a hub when initially powered.
3. Leave the case open as you'll need to reach the tamper switch to connect it to your hub.

Water Sensor 7 uses CR14250 (½ AA) batteries rated at 3.0V.

Connecting Water Sensor 7 to hub.

- A. Aeotec AutoPilot:
 - a. Select DEVICES.
 - b. Select + Add new.
 - c. Select +.
 - d. Select + Add.
 - e. Tap the Tamper Switch 3x times in 1.5 seconds on Water Sensor 7; its LED will flash red / green while Water Sensor 7 attempts to connect.
- B. Aeotec Smart Home Hub or SmartThings:
 - a. Open SmartThings app.
 - b. Tap +.
 - c. Tap Device.

Power Water Sensor 7.

To power up your Water Sensor 7 with the included CR14250 (½ AA) battery, follow these steps:

1. Press the open tab of your Water Sensor 7, then lift the case off.
2. Remove the plastic tab blocking connection of the CR14250 battery. The LED will blink its red LED 5 times when not connected to a hub when initially powered.
3. Leave the case open as you'll need to reach the tamper switch to connect it to your hub.

Water Sensor 7 uses CR14250 (½ AA) batteries rated at 3.0V.

Connecting Water Sensor 7 to hub.

- A. Aeotec AutoPilot:
 - a. Select DEVICES.
 - b. Select + Add new.
 - c. Select +.
 - d. Select + Add.
 - e. Tap the Tamper Switch 3x times in 1.5 seconds on Water Sensor 7; its LED will flash red / green while Water Sensor 7 attempts to connect.
- B. Aeotec Smart Home Hub or SmartThings:
 - a. Open SmartThings app.
 - b. Tap +.
 - c. Tap Device.

LED states during connection.

If the connection steps were followed correctly, the LED will change from a flashing red / green to one of these LED states depending on success or failure;

- Success: LED will become solid green for 2 seconds
- Fail: LED will become solid red for 2 seconds

⚠ If no LED light emits from Water Sensor 7, or there is no activity within your hub's interface, wait at least 10 seconds before you try connecting again. Thereafter, tap the Tamper Switch 3x times within 1.5 seconds.

Not connecting? Try these steps;

1. Move your sensor closer to your hub.
2. Set your hub to remove Z-Wave devices.
3. Tap the Tamper Switch 3x times within 1.5 seconds on Water Sensor 7. Its LED will flash red / green while it is attempting to disconnect, if successful, the LED will become solid green for 2 seconds.
4. Try connecting Water Sensor 7 again.
5. Get further help and tutorials at support.aeotec.com/lws7

Using your Water Sensor 7:

Scan these QR Codes to get more help on how to use Water Sensor 7 with these specific hubs.



AutoPilot Smart Home Hub / SmartThings Home Assistant

Need more assistance with a specific hub?

Scan this QR code or visit support.aeotec.com/lws7 to get more help with hubs and software including Home Assistant, Hubitat, and SmartThings.



Don't see what you need? Visit aeotec.com/support or contact us.

Need help? Contact us.

Contact our support team at aeotec.com/support.

Gateway compatibility.

To see if your sensor is known to be compatible with your Z-Wave gateway, please refer to support.aeotec.com/compat.

LED states during connection.

If the connection steps were followed correctly, the LED will change from a flashing red / green to one of these LED states depending on success or failure;

- Success: LED will become solid green for 2 seconds
- Fail: LED will become solid red for 2 seconds

⚠ If no LED light emits from Water Sensor 7, or there is no activity within your hub's interface, wait at least 10 seconds before you try connecting again. Thereafter, tap the Tamper Switch 3x times within 1.5 seconds.

Not connecting? Try these steps;

1. Move your sensor closer to your hub.
2. Set your hub to remove Z-Wave devices.
3. Tap the Tamper Switch 3x times within 1.5 seconds on Water Sensor 7. Its LED will flash red / green while it is attempting to disconnect, if successful, the LED will become solid green for 2 seconds.
4. Try connecting Water Sensor 7 again.
5. Get further help and tutorials at support.aeotec.com/lws7

Using your Water Sensor 7:

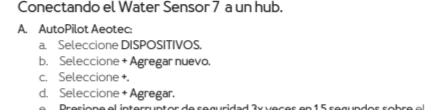
Scan these QR Codes to get more help on how to use Water Sensor 7 with these specific hubs.



AutoPilot Smart Home Hub / SmartThings Home Assistant

Need more assistance with a specific hub?

Scan this QR code or visit support.aeotec.com/lws7 to get more help with hubs and software including Home Assistant, Hubitat, and SmartThings.



Don't see what you need? Visit aeotec.com/support or contact us.

Need help? Contact us.

Contact our support team at aeotec.com/support.

Gateway compatibility.

To see if your sensor is known to be compatible with your Z-Wave gateway, please refer to support.aeotec.com/compat.

LED states during connection.

If the connection steps were followed correctly, the LED will change from a flashing red / green to one of these LED states depending on success or failure;

- Success: LED will become solid green for 2 seconds
- Fail: LED will become solid red for 2 seconds

⚠ If no LED light emits from Water Sensor 7, or there is no activity within your hub's interface, wait at least 10 seconds before you try connecting again. Thereafter, tap the Tamper Switch 3x times within 1.5 seconds.

Not connecting? Try these steps;

1. Move your sensor closer to your hub.
2. Set your hub to remove Z-Wave devices.
3. Tap the Tamper Switch 3x times within 1.5 seconds on Water Sensor 7. Its LED will flash red / green while it is attempting to disconnect, if successful, the LED will become solid green for 2 seconds.
4. Try connecting Water Sensor 7 again.
5. Get further help and tutorials at support.aeotec.com/lws7

Using your Water Sensor 7:

Scan these QR Codes to get more help on how to use Water Sensor 7 with these specific hubs.



AutoPilot Smart Home Hub / SmartThings Home Assistant

Using your Water Sensor 7:

Scan the QR code for more help on how to use Water Sensor 7 with these specific hubs.



AutoPilot Smart Home Hub / SmartThings Home Assistant

Need more assistance with a specific hub?

Scan this QR code or visit support.aeotec.com/lws7 to get more help with hubs and software including Home Assistant, Hubitat, and SmartThings.



Don't see what you need? Visit aeotec.com/support or contact us.

Need help? Contact us.

Contact our support team at aeotec.com/support.

Gateway compatibility.

To see if your sensor is known to be compatible with your Z-Wave gateway, please refer to support.aeotec.com/compat.

LED states during connection.

If the connection steps were followed correctly, the LED will change from a flashing red / green to one of these LED states depending on success or failure;

- Success: LED will become solid green for 2 seconds
- Fail: LED will become solid red for 2 seconds

⚠ If no LED light emits from Water Sensor 7, or there is no activity within your hub's interface, wait at least 10 seconds before you try connecting again. Thereafter, tap the Tamper Switch 3x times within 1.5 seconds.

Not connecting? Try these steps;

1. Move your sensor closer to your hub.
2. Set your hub to remove Z-Wave devices.
3. Tap the Tamper Switch 3x times within 1.5 seconds on Water Sensor 7. Its LED will flash red / green while it is attempting to disconnect, if successful, the LED will become solid green for 2 seconds.
4. Try connecting Water Sensor 7 again.
5. Get further help and tutorials at support.aeotec.com/lws7

Using your Water Sensor 7:

Scan these QR Codes to get more help on how to use Water Sensor 7 with these specific hubs.



AutoPilot Smart Home Hub / SmartThings Home Assistant

Using your Water Sensor 7:

Scan the QR code for more help on how to use Water Sensor 7 with these specific hubs.



AutoPilot Smart Home Hub / SmartThings Home Assistant

Need more assistance with a specific hub?

Scan this QR code or visit support.aeotec.com/lws7 to get more help with hubs and software including Home Assistant, Hubitat, and SmartThings.



Don't see what you need? Visit aeotec.com/support or contact us.

Need help? Contact us.

Contact our support team at aeotec.com/support.

Gateway compatibility.

To see if your sensor is known to be compatible with your Z-Wave gateway, please refer to support.aeotec.com/compat.

