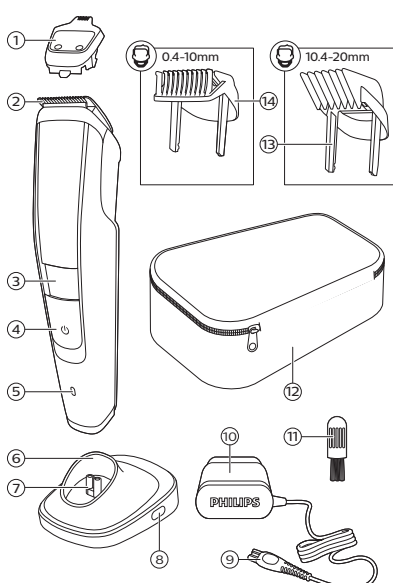


1

English

General description (Fig. 1)

- 1 Click-on precision trimmer attachment
- 2 Cutting unit
- 3 Length setting zoom wheel
- 4 On/off button
- 5 Battery charge indicator
- 6 Charging stand
- 7 Plug of charging stand
- 8 Small plug socket
- 9 Small plug
- 10 Supply unit
- 11 Cleaning brush
- 12 Pouch
- 13 Long beard comb
- 14 Short beard comb

Important safety information

Read this important information carefully before you use the appliance and its accessories and save it for future reference. The accessories supplied may vary for different products.

Danger

- Keep the supply unit dry (Fig. 2).

Warning

- To charge the battery, only use the detachable supply unit (HQ8505) provided with the appliance.
- The supply unit contains a transformer. Do not cut off the supply unit to replace it with another plug, as this causes a hazardous situation.
- This appliance can be used by children aged from 8 years and above and persons with reduced physical, sensory or mental capabilities or lack of experience and knowledge if they have been given supervision or instruction concerning use of the appliance in a safe way and understand the hazards involved. Children shall not play with the appliance. Cleaning and user maintenance shall not be made by children without supervision.
- Always unplug the appliance before you clean it under the tap.
- Always check the appliance before you use it. Do not use the appliance if it is damaged, as this may cause injury. Always replace a damaged part with one of the original type.
- This appliance contains batteries that are non-replaceable.

- Do not open the appliance to replace the rechargeable battery.

Caution

- Never immerse the charging stand in water and do not rinse it under the tap (Fig. 2).
- Never immerse the appliance in water. Do not use the appliance in the bath or shower.
- Never use water hotter than 60 °C to rinse the appliance.
- Only use this appliance for its intended purpose as shown in the user manual.
- For hygienic reasons, the appliance should only be used by one person.
- Do not use the supply unit in or near wall sockets that contain an electric air freshener to prevent irreparable damage to the supply unit.
- Never use compressed air, scouring pads, abrasive cleaning agents or aggressive liquids such as petrol or acetone to clean the appliance.

Electromagnetic fields (EMF)

This Philips appliance complies with all applicable standards and regulations regarding exposure to electromagnetic fields.

General

- This appliance can be safely cleaned under the tap (Fig. 3).
- The supply unit is suitable for mains voltages ranging from 100 to 240 volts.
- The supply unit transforms 100-240 volts to a safe low voltage of less than 24 volts.
- Maximum noise level: Lc = 69 dB(A)

Introduction

Congratulations on your purchase and welcome to Philips! To fully benefit from the support that Philips offers, register your product at www.philips.com/welcome.

Charging

Battery status indicator

- When the battery is almost empty, the battery charge indicator flashes orange.
- When the appliance is charging, the battery charge indicator flashes white.
- When the appliance is fully charged, the battery charge indicator lights up white continuously.

Note: After approx. 30 minutes, the light goes out automatically.

It takes approximately 1 hour to fully charge the appliance. When it is fully charged, the appliance has a cordless operating time of up to 90 minutes.

- 1 Make sure the appliance is switched off.
- 2 Insert the small plug into the appliance and put the supply unit in the wall socket (Fig. 6).
- 3 After charging, remove the supply unit from the wall socket and pull the small plug out of the appliance.

Using the appliance

- Note: This appliance can be used without cord or when it is connected to the wall socket (Fig. 7).

Switching the appliance on and off

- Press the on/off button once to switch the appliance on or off (Fig. 8).

Beard trimming

Trimming with comb

Note: When you trim for the first time, start at a length setting that is longer than what you are used to, to familiarize yourself with the appliance.

- The appliance comes with two combs: a long beard comb and a short beard comb.
 - Use the trimming comb attached to the cutting element to trim your beard and moustache in your preferred style. Turn the zoom wheel to choose from 20 length settings ranging from 10.4 mm to 20 mm (Fig. 10) (for the long beard comb) and 0.4 mm to 10 mm (Fig. 11) (for the short beard comb). The length settings are mentioned at the back of the combs.
- 1 Make sure the appliance is switched off.
 - 2 Slide the comb into the guiding grooves on both sides of the appliance ('click') (Fig. 9).
 - 3 Turn the zoom wheel to select the desired length setting (Fig. 10). The selected length setting is shown on the front of the appliance. The blue color refers to length settings ranging from 10.4 mm to 20 mm (Fig. 14) and the silver refers to length settings ranging from 0.4 to 10 mm (Fig. 13).