

ENGLISH

Introduction	3
Care and maintenance	3
Features	4
General features	4
Technical specifications	4
Audio	4
Bluetooth connectivity	4
Analogue inputs	4
Power supply	4
Other features	4
Product content	4
General overview	5
Installation	6
Switching on and off the device	7
Main speaker functions	7
RCA audio input	8
Auto power off function	8
Warranty	8
Declaration of conformity	8

ENERGY♥SYSTEM



studio monitor 2.

Manual de usuario / User manual
Manual de l'utilisateur / Manual do usuário

Introduction

- Thank you for trusting our company and buying the new *Studio Monitor 2 Bluetooth*. We hope you enjoy the product.
- Before you start using the product, we strongly recommend reading this manual to get used to it.

Care and maintenance

- Do not expose your *Studio Monitor 2 Bluetooth* to humidity or high temperatures.
- Do not use neither corrosive nor abrasive cleaning products.
- Do not disassemble the device. All repair works should be carried out exclusively by qualified staff of Energy Sistem Technology, S.A.
- Unplug the *Studio Monitor 2 Bluetooth* from the wall socket if you are not going to use it for a long period of time.

Features

General features

- Compact in size, the ideal 2.0 solution for desktops, bookshelves and small spaces.
- Dual RCA inputs to easily connect to any device, or even two at the same time, without having to plug and unplug.
- Bluetooth 5.0 for a stable connection to any smartphone up to 20 metres away.
- MDF (medium-density fibreboard) casing to reduce distortion and minimise acoustic resonance.

Technical specifications

Audio

- Sound system: 2.0 stereo system
- Power: 50 W RMS, 80 W max
- 2 tweeters: 1.5 inches
- 2 full-range speakers: 4 inches
- Front bass reflex
- Frequency response: 60 Hz ~ 18 kHz
- Signal/Noise ratio: > 80 dB
- Built-in DSP
- Bass control
- MDF wooden casing

Bluetooth connectivity

- Bluetooth 5.0, class II
- Frequency band: 2.4 GHz
- Maximum output power: < 20.00 dBm
- Compatible Bluetooth profiles: A2DP
- Up to 20 m distance range

Analogue inputs

- 2 analogue stereo RCA inputs

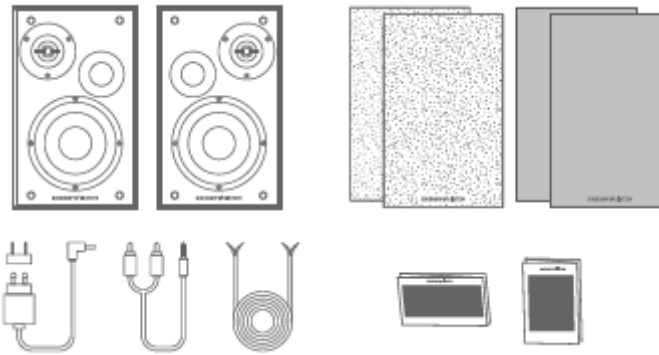
Power supply

- AC/DC power adapter: 100~240 V, 50/60 Hz
- Device adapter: 19 V, 1.89 A DC
- Plug for electric socket: EU plug/USA plug
- Power cable length: 200 cm
- Power consumption at medium volume: 3 Wh
- Power consumption at maximum volume: 12 Wh

Other features

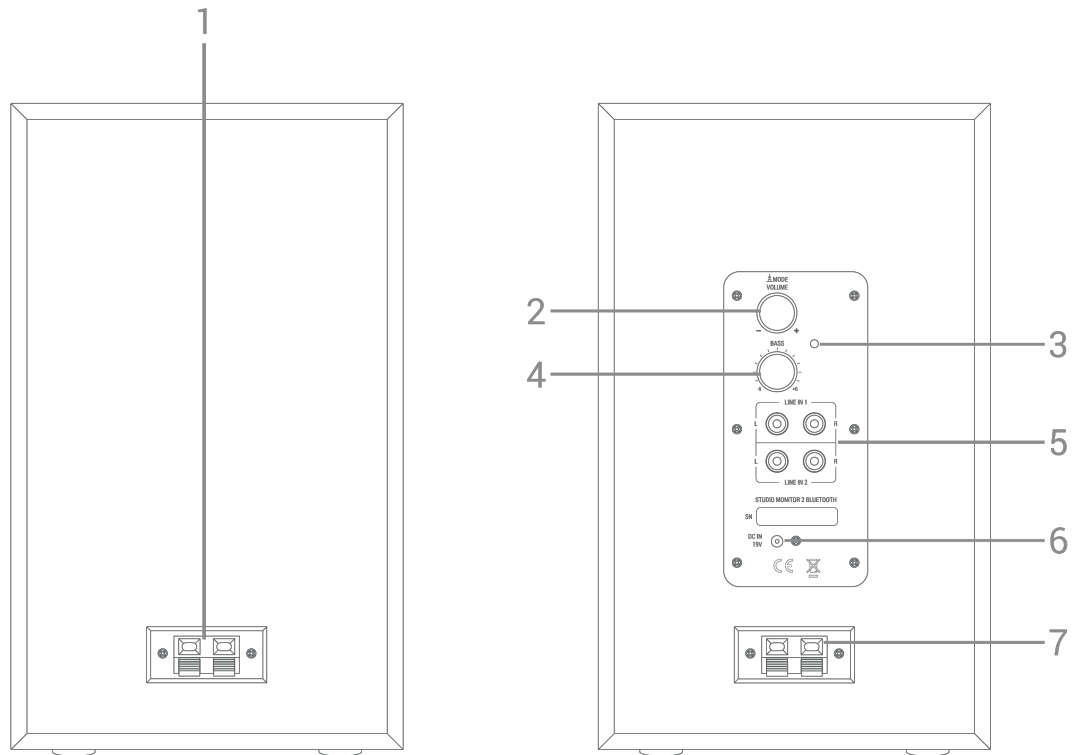
- Removable fabric front grill
- Auto power off function

Product content



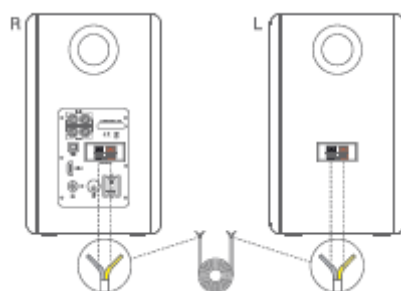
- Studio Monitor 2 Bluetooth
- Additional front grill
- Audio cable to connect the Left and Right speakers
- AC/DC power adapter
- RCA to 3.5 mm mini jack cable

General overview



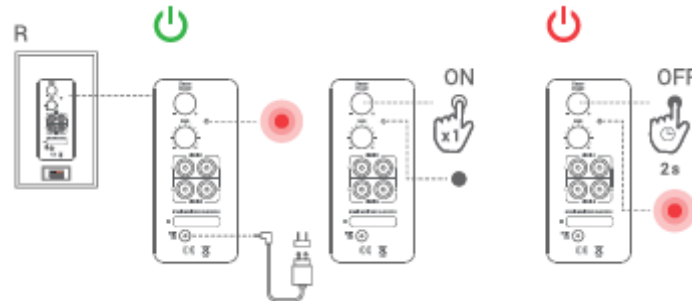
1. Right speaker input
2. On/Off, playback mode and volume
3. Status LED
4. Bass control
5. First and second RCA inputs
6. Power jack
7. Left speaker output

Installation



First plug the provided cable (for connecting the Left and Right speakers) into both speakers' connections noting the colours. The copper red connector must be plugged into the speaker's red connection and the silver connector into the black connection.

Switching on and off the device

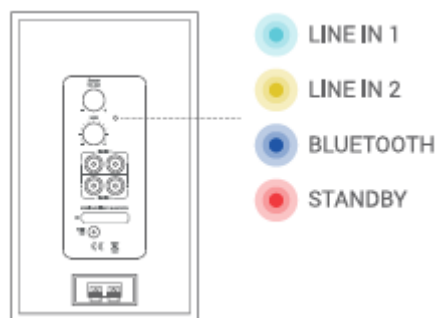


First plug the power cable into the speaker *Power jack* (6).

To switch on the device, press *On/Off, playback mode and volume* (2). At this point the *Status LED* (3) lights up.

To turn off the device, press and hold *On/Off, playback mode and volume* (2) for two seconds.

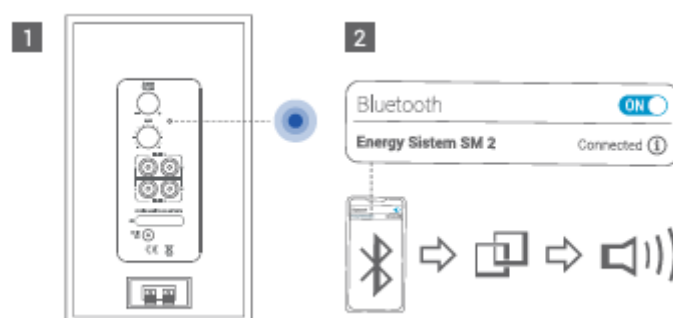
Main speaker functions



Control the speaker via Bluetooth. You can control music playback on your phone or music player.

To select the playback mode, press *On/Off, playback mode and volume* (2) until you find the preferred input channel to play music. Take a look at the *Status LED* (3) colour to identify the different playback modes: Bluetooth (blue), First RCA input (light blue), Second RCA input (yellow).

To adjust the volume, press repeatedly *On/Off, playback mode and volume* (2) on the remote control until the desired volume is reached.



Press *On/Off*, *playback mode and volume (2)* until the *Status LED (3)* lights up blue to select Bluetooth mode while your *Studio Monitor 2 Bluetooth* is on.

Select *Studio Monitor 2 Bluetooth* from the list of Bluetooth devices on your source device (smartphone, tablet, PC, etc.) and press "connect". Both devices will be connected immediately and without codes. You will hear a confirmation sound when they are paired.

At this point you can start playing music on the connected source device. The Bluetooth wireless connection range is up to 20 metres.

Your *Studio Monitor 2 Bluetooth* will pair automatically when you turn it on once again, provided that Bluetooth is enabled on your source device.

RCA audio input



Your *Studio Monitor 2 Bluetooth* features two RCA inputs, *First and second RCA inputs (5)*, on the back to connect any external device and enjoy your music.

NOTE -The maximum volume depends on the power of the signal delivered by the source device.

Auto power off function

This product features an auto power off function to save energy when you are not using it. The speakers will turn off automatically in the following situations:

- If Bluetooth mode is enabled and the speakers are not synchronised with any source device after 5 minutes in search mode.
- If one hour elapses without the speakers receiving any audio signal, regardless of the selected mode.

Warranty

You can check the warranty terms [here](#)

Declaration of conformity

Issuer's name: Energy Sistem Technology, S.A. - CIF: A53107488

Address: C/ Calpe, 1 - 03509 Finestrat, Alicante (Spain)

Tel: +34 966 830 324

We declare under our sole and exclusive responsibility that the product:

Description: home bookshelf speakers

Brand: Energy Sistem

Model: Studio Monitor 2 Bluetooth

Manufacturer: Energy Sistem Technology, S.A.

Manufacturing country: China

referred to in this declaration complies with the essential norms and standards

EN 62368-1:2014+A11:2017

EN 62479:2012

EN 301 489-1 V2.2.3 (2019-11)

EN 301 489-17 V3.2.2 (2019-12)

EN 300 328 V2.2.2 (2019-07)

in conformity with the provisions of the Directive 2014/53/EU of the European Parliament and of the Council of 16th April 2014.

Finestrat, 1st November 2021



Miguel Ángel Aragüez García
Innovation and Technology Director

