

## Verification Report No.: CANEC24014850001

Date: Sep 18, 2024

Page 1 of 38

Client Name: BELKIN INTERNATIONAL INC.

Client Address: 555 S. AVIATION BLVD. SUITE 180 EL SEGUNDO, CA 90245-4852 USA

Sample Name: USB-C 11-in-1 Pro GaN Dock

Tested Basic Model No.: INC020

Client Ref. Information: Brand name: belkin

Origin of the Product(s): Vietnam

Destination of the Product(s): Global

The above sample(s) and information were provided by the client.

SGS Job No.: SZP24-029866

Sample Receiving Date: Jul 09, 2024

Verification Period: Jul 09, 2024 ~ Sep 02, 2024

Verification Requested: With reference to RoHS Directive (EU) 2015/863 amending 2011/65/EU.

Verification Method(s): Please refer to next page(s).

Verification Result(s): Please refer to next page(s).

### Test Result Summary:

Test Items	Conclusion
EU RoHS Directive (EU) 2015/863 amending Annex II to Directive 2011/65/EU - Lead, Mercury, Cadmium, Hexavalent chromium, Polybrominated biphenyls (PBB), Polybrominated diphenyl ethers (PBDE), Bis(2-ethylhexyl) phthalate (DEHP), Butyl benzyl phthalate (BBP), Dibutyl phthalate (DBP) and Diisobutyl phthalate (DIBP)	Pass

Signed for and on behalf of  
SGS-CSTC Standards Technical Services Co., Ltd. Guangzhou Branch

Tyler Zhang

Tyler-Y Zhang  
Approved Signatory

scan to see the report



5544B274



SGS-CSTC Standards Technical Services Co., Ltd.  
Guangzhou Branch

Unless otherwise agreed in writing, this document is issued by the Company subject to its General Conditions of Service printed overleaf, available on request or accessible at <https://www.sgs.com/en/Terms-and-Conditions>. Attention is drawn to the limitation of liability, indemnification and jurisdiction issues defined therein. Any holder of this document is advised that information contained hereon reflects the Company's findings at the time of its intervention only and within the limits of Client's instructions, if any. The Company's sole responsibility is to its Client and this document does not exonerate parties to a transaction from exercising all their rights and obligations under the transaction documents. This document cannot be reproduced except in full, without prior written approval of the Company. Any unauthorized alteration, forgery or falsification of the content or appearance of this document is unlawful and offenders may be prosecuted to the fullest extent of the law. Unless otherwise stated the results shown in this test report refer only to the sample(s) tested.  
Attention: To check the authenticity of testing /inspection report & certificate, please contact us at telephone: (86-755) 8307 1443, or email: [CN.Doccheck@sgs.com](mailto:CN.Doccheck@sgs.com)

No.198, Kezhu Road, Science City, Economic & Technological Development Area, Guangzhou, Guangdong, China 510663  
中国·广东·广州高新技术产业开发区科学城科珠路198号 邮编: 510663

t (86-20) 82155555 www.sgsgroup.com.cn  
t (86-20) 82155555 sgs.china@sgs.com

Member of the SGS Group (SGS SA)

Photo of Submitted Sample



### Verification Method(s):

1. With reference to IEC 62321-2:2021, disassembly and disjointment were performed for the submitted samples.
2. With reference to IEC 62321-1:2013, tests were performed for the samples indicated by the photos in this report.
  - (1) With reference to IEC 62321-3-1:2013, screening by EDXRF spectroscopy.
  - (2) Wet chemical test method: With reference to IEC 62321-4:2013+A1:2017, IEC62321-5:2013, IEC 62321-7-1:2015, IEC 62321-7-2:2017, IEC 62321-12:2023, IEC 62321-6:2015 and IEC62321-8:2017 , analyzed by ICP-OES,UV-Vis and GC-MS.



SGS-CSI Standards Technical Service Co., Ltd.  
Guangzhou Branch Technical Laboratory

Unless otherwise agreed in writing, this document is issued by the Company subject to its General Conditions of Service printed overleaf, available on request or accessible at <https://www.sgs.com/en/Terms-and-Conditions>. Attention is drawn to the limitation of liability, indemnification and jurisdiction issues defined therein. Any holder of this document is advised that information contained hereon reflects the Company's findings at the time of its intervention only and within the limits of Client's instructions, if any. The Company's sole responsibility is to its Client and this document does not exonerate parties to a transaction from exercising all their rights and obligations under the transaction documents. This document cannot be reproduced except in full, without prior written approval of the Company. Any unauthorized alteration, forgery or falsification of the content or appearance of this document is unlawful and offenders may be prosecuted to the fullest extent of the law. Unless otherwise stated the results shown in this test report refer only to the sample(s) tested.  
**Attention: To check the authenticity of testing /inspection report & certificate, please contact us at telephone: (86-755) 8307 1443, or email: [CN.Doccheck@sgs.com](mailto:CN.Doccheck@sgs.com)**

No.198, Kezhu Road, Science City, Economic & Technological Development Area, Guangzhou, Guangdong, China 510663  
中国·广东·广州高新技术产业开发区科学城科珠路198号 邮编: 510663

t (86-20) 82155555 [www.sgsgroup.com.cn](http://www.sgsgroup.com.cn)  
t (86-20) 82155555 [sgs.china@sgs.com](mailto:sgs.china@sgs.com)

**Verification Part Description:**

SN ID	Sample No.	SGS Sample ID	Description
SN1	A1	CAN24-0148500-0001.C001	Black plastic cover
SN2	A2	CAN24-0148500-0001.C002	Black plastic button
SN3	A3	CAN24-0148500-0001.C003	Transparent plastic part
SN4	A4	CAN24-0148500-0001.C004	Black adhesive rubber sheet
SN5	A5	CAN24-0148500-0001.C005	Transparent adhesive plastic sheet
SN6	A6	CAN24-0148500-0001.C006	Silvery metal screw
SN7	A7	CAN24-0148500-0001.C007	Black plastic cover
SN8	A8	CAN24-0148500-0001.C008	Black surfaced metal screw
SN9	A9	CAN24-0148500-0001.C009	Silver-gray surfaced plastic shell
SN10	A10	CAN24-0148500-0001.C010	White glue
SN11	A11	CAN24-0148500-0001.C011	Golden metal sheet
SN12	A12	CAN24-0148500-0001.C012	Blue material sheet
SN13	A13	CAN24-0148500-0001.C013	Dark grey body with black printing
SN14	A14	CAN24-0148500-0001.C014	Brown body (chip capacitor)
SN15	A15	CAN24-0148500-0001.C015	Black body
SN16	A16	CAN24-0148500-0001.C016	Black body
SN17	A17	CAN24-0148500-0001.C017	Black body
SN18	A18	CAN24-0148500-0001.C018	Black body
SN19	A19	CAN24-0148500-0001.C019	Black body
SN20	A20	CAN24-0148500-0001.C020	Brown body (chip capacitor)
SN21	A21	CAN24-0148500-0001.C021	Dark brown body
SN22	A22	CAN24-0148500-0001.C022	Black body
SN23	A23	CAN24-0148500-0001.C023	Black body
SN24	A24	CAN24-0148500-0001.C024	Silvery body
SN25	A25	CAN24-0148500-0001.C025	Black body
SN26	A26	CAN24-0148500-0001.C026	Blue material part
SN27	A27	CAN24-0148500-0001.C027	Black plastic part
SN28	A28	CAN24-0148500-0001.C028	Silvery metal pin
SN29	A29	CAN24-0148500-0001.C029	Silvery metal part
SN30	A30	CAN24-0148500-0001.C030	Silvery metal frame
SN31	A31	CAN24-0148500-0001.C031	Dark grey plastic part
SN32	A32	CAN24-0148500-0001.C032	Golden metal pin
SN33	A33	CAN24-0148500-0001.C033	Silvery metal pin
SN34	A34	CAN24-0148500-0001.C034	Silvery metal sheet
SN35	A35	CAN24-0148500-0001.C035	Silvery metal frame
SN36	A36	CAN24-0148500-0001.C036	Silvery metal part
SN37	A37	CAN24-0148500-0001.C037	Blue plastic part
SN38	A38	CAN24-0148500-0001.C038	Silvery/golden metal pin
SN39	A39	CAN24-0148500-0001.C039	Dark grey plastic part
SN40	A40	CAN24-0148500-0001.C040	Silvery/golden metal pin
SN41	A41	CAN24-0148500-0001.C041	Silvery metal spring
SN42	A42	CAN24-0148500-0001.C042	Golden metal part
SN43	A43	CAN24-0148500-0001.C043	Black plastic part
SN44	A44	CAN24-0148500-0001.C044	Silvery metal part
SN45	A45	CAN24-0148500-0001.C045	Silvery metal part
SN46	A46	CAN24-0148500-0001.C046	Dark grey plastic part
SN47	A47	CAN24-0148500-0001.C047	Silvery/golden metal pin
SN48	A48	CAN24-0148500-0001.C048	Silvery metal frame



Unless otherwise agreed in writing, this document is issued by the Company subject to its General Conditions of Service printed overleaf, available on request or accessible at <https://www.sgs.com/en/Terms-and-Conditions>. Attention is drawn to the limitation of liability, indemnification and jurisdiction issues defined therein. Any holder of this document is advised that information contained hereon reflects the Company's findings at the time of its intervention only and within the limits of Client's instructions, if any. The Company's sole responsibility is to its Client and this document does not exonerate parties to a transaction from exercising all their rights and obligations under the transaction documents. This document cannot be reproduced except in full, without prior written approval of the Company. Any unauthorized alteration, forgery or falsification of the content or appearance of this document is unlawful and offenders may be prosecuted to the fullest extent of the law. Unless otherwise stated the results shown in this test report refer only to the sample(s) tested.

**Attention: To check the authenticity of testing / inspection report & certificate, please contact us at telephone: (86-755) 8307 1443, or email: [CN.Doccheck@sgs.com](mailto:CN.Doccheck@sgs.com)**



SN ID	Sample No.	SGS Sample ID	Description
SN49	A49	CAN24-0148500-0001.C049	Silvery metal frame
SN50	A50	CAN24-0148500-0001.C050	Dark grey plastic part
SN51	A51	CAN24-0148500-0001.C051	Silvery/golden metal pin
SN52	A52	CAN24-0148500-0001.C052	Dark grey plastic part
SN53	A53	CAN24-0148500-0001.C053	Golden metal pin
SN54	A54	CAN24-0148500-0001.C054	Green transparent body (LED)
SN55	A55	CAN24-0148500-0001.C055	Yellow transparent body (LED)
SN56	A56	CAN24-0148500-0001.C056	Silvery metal pin
SN57	A57	CAN24-0148500-0001.C057	Green adhesive paper sheet with multicolor printing
SN58	A58	CAN24-0148500-0001.C058	Black body
SN59	A59	CAN24-0148500-0001.C059	Black plastic shell with grey printing
SN60	A60	CAN24-0148500-0001.C060	Dark grey core
SN61	A61	CAN24-0148500-0001.C061	Beige plastic part
SN62	A62	CAN24-0148500-0001.C062	Silvery metal shell with black printing
SN63	A63	CAN24-0148500-0001.C063	Black body
SN64	A64	CAN24-0148500-0001.C064	Black body
SN65	A65	CAN24-0148500-0001.C065	Black body
SN66	A66	CAN24-0148500-0001.C066	Black plastic sheet
SN67	A67	CAN24-0148500-0001.C067	Black rubber cover
SN68	A68	CAN24-0148500-0001.C068	Black paper sheet with liquid
SN69	A69	CAN24-0148500-0001.C069	Silver-gray metal sheet
SN70	A70	CAN24-0148500-0001.C070	Silvery metal pin
SN71	A71	CAN24-0148500-0001.C071	Black body
SN72	A72	CAN24-0148500-0001.C072	Black body
SN73	A73	CAN24-0148500-0001.C073	Black body
SN74	A74	CAN24-0148500-0001.C074	Black body
SN75	A75	CAN24-0148500-0001.C075	Black body
SN76	A76	CAN24-0148500-0001.C076	Silvery metal solder
SN77	A77	CAN24-0148500-0001.C077	Black "PCB"
SN78	A78	CAN24-0148500-0001.C078	Black plastic sheet
SN79	A79	CAN24-0148500-0001.C079	Blue material
SN80	A80	CAN24-0148500-0001.C080	Yellow adhesive plastic sheet
SN81	A81	CAN24-0148500-0001.C081	Dark grey core
SN82	A82	CAN24-0148500-0001.C082	Black plastic part
SN83	A83	CAN24-0148500-0001.C083	Black glue
SN84	A84	CAN24-0148500-0001.C084	White translucent plastic tube
SN85	A85	CAN24-0148500-0001.C085	Translucent adhesive plastic sheet
SN86	A86	CAN24-0148500-0001.C086	Copper-colored enamel-insulated wire
SN87	A87	CAN24-0148500-0001.C087	Black plastic tube
SN88	A88	CAN24-0148500-0001.C088	Yellow plastic tube
SN89	A89	CAN24-0148500-0001.C089	Copper-colored enamel-insulated wire
SN90	A90	CAN24-0148500-0001.C090	Silvery metal shell with black printing
SN91	A91	CAN24-0148500-0001.C091	Copper-colored enamel-insulated wire
SN92	A92	CAN24-0148500-0001.C092	Yellow plastic shell with black printing
SN93	A93	CAN24-0148500-0001.C093	Yellow plastic shell with black printing
SN94	A94	CAN24-0148500-0001.C094	Black plastic (heat shrinkable tube) with white printing
SN95	A95	CAN24-0148500-0001.C095	Brown plastic sheet



SGS-CT (Guangzhou) Technical Services Co., Ltd.  
Guangzhou Branch of SGS-CT Technical Laboratory

Unless otherwise agreed in writing, this document is issued by the Company subject to its General Conditions of Service printed overleaf, available on request or accessible at <https://www.sgs.com/en/Terms-and-Conditions>. Attention is drawn to the limitation of liability, indemnification and jurisdiction issues defined therein. Any holder of this document is advised that information contained hereon reflects the Company's findings at the time of its intervention only and within the limits of Client's instructions, if any. The Company's sole responsibility is to its Client and this document does not exonerate parties to a transaction from exercising all their rights and obligations under the transaction documents. This document cannot be reproduced except in full, without prior written approval of the Company. Any unauthorized alteration, forgery or falsification of the content or appearance of this document is unlawful and offenders may be prosecuted to the fullest extent of the law. Unless otherwise stated the results shown in this test report refer only to the sample(s) tested.  
**Attention: To check the authenticity of testing / inspection report & certificate, please contact us at telephone: (86-755) 8307 1443, or email: [CN.Doccheck@sgs.com](mailto:CN.Doccheck@sgs.com)**

No.198, Kezhu Road, Science City, Economic & Technological Development Area, Guangzhou, Guangdong, China 510663  
中国·广东·广州高新技术产业开发区科学城科珠路198号 邮编: 510663

t (86-20) 82155555 [www.sgsgroup.com.cn](http://www.sgsgroup.com.cn)  
t (86-20) 82155555 [sgs.china@sgs.com](mailto:sgs.china@sgs.com)

SN ID	Sample No.	SGS Sample ID	Description
SN96	A96	CAN24-0148500-0001.C096	Black rubber cover
SN97	A97	CAN24-0148500-0001.C097	Brown paper sheet with liquid
SN98	A98	CAN24-0148500-0001.C098	Silver-gray metal sheet
SN99	A99	CAN24-0148500-0001.C099	Silvery metal pin
SN100	A100	CAN24-0148500-0001.C100	Green/blue surfaced core
SN101	A101	CAN24-0148500-0001.C101	Black glue
SN102	A102	CAN24-0148500-0001.C102	Yellow block (envelopment)
SN103	A103	CAN24-0148500-0001.C103	Silvery block(filling)
SN104	A104	CAN24-0148500-0001.C104	Silvery metal pin
SN105	A105	CAN24-0148500-0001.C105	Yellow block (envelopment)
SN106	A106	CAN24-0148500-0001.C106	Green body with black printing
SN107	A107	CAN24-0148500-0001.C107	Silvery metal sheet
SN108	A108	CAN24-0148500-0001.C108.C001	Black body
SN109	A109	CAN24-0148500-0001.C109	Black plastic shell with white printing
SN110	A110	CAN24-0148500-0001.C110	Green plastic shell with white printing
SN111	A111	CAN24-0148500-0001.C111	Light blue surfaced metal screw
SN112	A112	CAN24-0148500-0001.C112	Silvery metal sheet
SN113	A113	CAN24-0148500-0001.C113	Black plastic part
SN114	A114	CAN24-0148500-0001.C114	Silvery metal pin
SN115	A115	CAN24-0148500-0001.C115	Silvery metal shell
SN116	A116	CAN24-0148500-0001.C116	Black rubber cover
SN117	A117	CAN24-0148500-0001.C117	Transparent adhesive plastic sheet
SN118	A118	CAN24-0148500-0001.C118	Brown paper sheet with liquid
SN119	A119	CAN24-0148500-0001.C119	Silver-gray metal sheet
SN120	A120	CAN24-0148500-0001.C120	Silvery metal pin
SN121	A121	CAN24-0148500-0001.C121	Brown plastic shell with white printing
SN122	A122	CAN24-0148500-0001.C122	Black plastic (heat shrinkable tube) with white printing
SN123	A123	CAN24-0148500-0001.C123	Green surfaced core
SN124	A124	CAN24-0148500-0001.C124	Green surfaced core
SN125	A125	CAN24-0148500-0001.C125	Copper-colored enamel-insulated wire
SN126	A126	CAN24-0148500-0001.C126	Yellow plastic sheet
SN127	A127	CAN24-0148500-0001.C127	Black glue
SN128	A128	CAN24-0148500-0001.C128	Yellow surfaced metal wire
SN129	A129	CAN24-0148500-0001.C129	Copper-colored enamel-insulated wire
SN130	A130	CAN24-0148500-0001.C130	White translucent plastic tube
SN131	A131	CAN24-0148500-0001.C131	Copper-colored adhesive metal sheet
SN132	A132	CAN24-0148500-0001.C132	Silvery metal solder
SN133	A133	CAN24-0148500-0001.C133	Black plastic part
SN134	A134	CAN24-0148500-0001.C134	Beige body
SN135	A135	CAN24-0148500-0001.C135	Golden metal pin
SN136	A136	CAN24-0148500-0001.C136.C001	Black body
SN137	A137	CAN24-0148500-0001.C137	Black adhesive rubber sheet
SN138	A138	CAN24-0148500-0001.C138.C001	Black body
SN139	A139	CAN24-0148500-0001.C139	Black body



Unless otherwise agreed in writing, this document is issued by the Company subject to its General Conditions of Service printed overleaf, available on request or accessible at <https://www.sgs.com/en/Terms-and-Conditions>. Attention is drawn to the limitation of liability, indemnification and jurisdiction issues defined therein. Any holder of this document is advised that information contained hereon reflects the Company's findings at the time of its intervention only and within the limits of Client's instructions, if any. The Company's sole responsibility is to its Client and this document does not exonerate parties to a transaction from exercising all their rights and obligations under the transaction documents. This document cannot be reproduced except in full, without prior written approval of the Company. Any unauthorized alteration, forgery or falsification of the content or appearance of this document is unlawful and offenders may be prosecuted to the fullest extent of the law. Unless otherwise stated the results shown in this test report refer only to the sample(s) tested.

**Attention: To check the authenticity of testing/inspection report & certificate, please contact us at telephone: (86-755) 8307 1443, or email: [CN.Doccheck@sgs.com](mailto:CN.Doccheck@sgs.com)**

SGS-Standard Technical Services Co., Ltd.  
Guangzhou Branch: Guangzhou Technical Laboratory

No.198, Kezhu Road, Science City, Economic & Technological Development Area, Guangzhou, Guangdong, China 510663  
中国·广东·广州高新技术产业开发区科学城科珠路198号 邮编: 510663

t (86-20) 82155555 [www.sgsgroup.com.cn](http://www.sgsgroup.com.cn)  
t (86-20) 82155555 [sgs.china@sgs.com](mailto:sgs.china@sgs.com)

SN ID	Sample No.	SGS Sample ID	Description
SN140	A140	CAN24-0148500-0001.C140.C001	Red/blue body
SN141	A141	CAN24-0148500-0001.C141.C001	Black body
SN142	A142	CAN24-0148500-0001.C142	Black body
SN143	A143	CAN24-0148500-0001.C143	Black body
SN144	A144	CAN24-0148500-0001.C144.C001	Black body with white printing
SN145	A145	CAN24-0148500-0001.C145.C001	Black body with white printing
SN146	A146	CAN24-0148500-0001.C146	Brown body (chip capacitor)
SN147	A147	CAN24-0148500-0001.C147	White body
SN148	A148	CAN24-0148500-0001.C148	Black body with white printing
SN149	A149	CAN24-0148500-0001.C149.C001	Black body
SN150	A150	CAN24-0148500-0001.C150	Brown body (chip capacitor)
SN151	A151	CAN24-0148500-0001.C151	Black body with white printing
SN152	A152	CAN24-0148500-0001.C152.C001	Black body
SN153	A153	CAN24-0148500-0001.C153	Silvery metal solder
SN154	A154	CAN24-0148500-0001.C154	Black "PCB"
SN155	A155	CAN24-0148500-0001.C155	Black plastic shell
SN156	A156	CAN24-0148500-0001.C156	Silvery metal screw
SN157	A157	CAN24-0148500-0001.C157	Silvery metal part
SN158	A158	CAN24-0148500-0001.C158	Black plastic (heat shrinkable tube) with white printing
SN159	A159	CAN24-0148500-0001.C159	White plastic part
SN160	A160	CAN24-0148500-0001.C160	Black "PCB"
SN161	A161	CAN24-0148500-0001.C161	Beige plastic part
SN162	A162	CAN24-0148500-0001.C162	Black plastic part
SN163	A163	CAN24-0148500-0001.C163	Black plastic (wire insulation)
SN164	A164	CAN24-0148500-0001.C164	Red plastic (wire insulation)
SN165	A165	CAN24-0148500-0001.C165	Silvery metal wire
SN166	A166	CAN24-0148500-0001.C166	Silvery metal solder
SN167	A167	CAN24-0148500-0001.C167	Silvery metal part
SN168	A168	CAN24-0148500-0001.C168	Silvery metal pin
SN169	A169	CAN24-0148500-0001.C169	Black plastic (cable jacket)
SN170	A170	CAN24-0148500-0001.C170	Silvery metal wire
SN171	A171	CAN24-0148500-0001.C171	Silvery/blue material sheet
SN172	A172	CAN24-0148500-0001.C172	Silvery metal wire
SN173	A173	CAN24-0148500-0001.C173	Red plastic (wire insulation)
SN174	A174	CAN24-0148500-0001.C174	Blue plastic (wire insulation)
SN175	A175	CAN24-0148500-0001.C175	Brown plastic (wire insulation)
SN176	A176	CAN24-0148500-0001.C176	Yellow plastic (wire insulation)
SN177	A177	CAN24-0148500-0001.C177	Orange plastic (wire insulation)
SN178	A178	CAN24-0148500-0001.C178	Green plastic (wire insulation)
SN179	A179	CAN24-0148500-0001.C179	White plastic (wire insulation)
SN180	A180	CAN24-0148500-0001.C180	Blue plastic (wire insulation)
SN181	A181	CAN24-0148500-0001.C181	White translucent plastic (wire insulation)



SGS-CT Standards Technical Service Co., Ltd.  
Guangzhou Branch / 广州分公司

Unless otherwise agreed in writing, this document is issued by the Company subject to its General Conditions of Service printed overleaf, available on request or accessible at <https://www.sgs.com/en/Terms-and-Conditions>. Attention is drawn to the limitation of liability, indemnification and jurisdiction issues defined therein. Any holder of this document is advised that information contained hereon reflects the Company's findings at the time of its intervention only and within the limits of Client's instructions, if any. The Company's sole responsibility is to its Client and this document does not exonerate parties to a transaction from exercising all their rights and obligations under the transaction documents. This document cannot be reproduced except in full, without prior written approval of the Company. Any unauthorized alteration, forgery or falsification of the content or appearance of this document is unlawful and offenders may be prosecuted to the fullest extent of the law. Unless otherwise stated the results shown in this test report refer only to the sample(s) tested.  
**Attention: To check the authenticity of testing / inspection report & certificate, please contact us at telephone: (86-755) 8307 1443, or email: [CN.Doccheck@sgs.com](mailto:CN.Doccheck@sgs.com)**

No.198, Kezhu Road, Science City, Economic & Technological Development Area, Guangzhou, Guangdong, China 510663  
中国·广东·广州高新技术产业开发区科学城科珠路198号 邮编: 510663

t (86-20) 82155555 [www.sgsgroup.com.cn](http://www.sgsgroup.com.cn)  
t (86-20) 82155555 [sgs.china@sgs.com](mailto:sgs.china@sgs.com)



SN ID	Sample No.	SGS Sample ID	Description
SN182	A182	CAN24-0148500-0001.C182	Brown plastic sheet
SN183	A183	CAN24-0148500-0001.C183	Green plastic sheet
SN184	A184	CAN24-0148500-0001.C184	Yellow plastic sheet
SN185	A185	CAN24-0148500-0001.C185	Blue plastic sheet
SN186	A186	CAN24-0148500-0001.C186	Silvery material sheet
SN187	A187	CAN24-0148500-0001.C187	Silvery metal frame
SN188	A188	CAN24-0148500-0001.C188	Black plastic shell
SN189	A189	CAN24-0148500-0001.C189	Silvery metal part
SN190	A190	CAN24-0148500-0001.C190	Brown transparent glue
SN191	A191	CAN24-0148500-0001.C191	Copper-colored metal part
SN192	A192	CAN24-0148500-0001.C192	Green "PCB"
SN193	A193	CAN24-0148500-0001.C193	Silvery metal solder
SN194	A194	CAN24-0148500-0001.C194	Dark grey plastic part
SN195	A195	CAN24-0148500-0001.C195	Silvery metal pin
SN196	A196	CAN24-0148500-0001.C196	Silvery metal pin
SN197	A197	CAN24-0148500-0001.C197	Black body
SN198	A198	CAN24-0148500-0001.C198	Silvery metal solder
SN199	A199	CAN24-0148500-0001.C199	Red "PCB"
SN200	A200	CAN24-0148500-0001.C200	Black plastic (cable jacket)
SN201	A201	CAN24-0148500-0001.C201	White plastic (wire insulation)
SN202	A202	CAN24-0148500-0001.C202	Black plastic (wire insulation)
SN203	A203	CAN24-0148500-0001.C203	Copper-colored metal wire
SN204	A204	CAN24-0148500-0001.C204	Silvery metal pin
SN205	A205	CAN24-0148500-0001.C205	Black plastic (plug overmold)
SN206	A206	CAN24-0148500-0001.C206	White plastic (plug innermold)
SN207	A207	CAN24-0148500-0001.C207	Black plastic part
SN208	A208	CAN24-0148500-0001.C208	Black plastic shell
SN209	A209	CAN24-0148500-0001.C209	Copper-colored metal part
SN210	A210	CAN24-0148500-0001.C210	Black plastic (cable jacket) with white printing
SN211	A211	CAN24-0148500-0001.C211	Black plastic (plug overmold)
SN212	A212	CAN24-0148500-0001.C212	Silvery metal pin
SN213	A213	CAN24-0148500-0001.C213	Black plastic part
SN214	A214	CAN24-0148500-0001.C214	White plastic (wire insulation)
SN215	A215	CAN24-0148500-0001.C215	Black plastic (wire insulation)
SN216	A216	CAN24-0148500-0001.C216	Black plastic shell
SN217	A217	CAN24-0148500-0001.C217	Black plastic part
SN218	A218	CAN24-0148500-0001.C218	Black plastic (cable jacket) with white printing
SN219	A219	CAN24-0148500-0001.C219	Blue plastic (wire insulation)
SN220	A220	CAN24-0148500-0001.C220	Brown plastic (wire insulation)
SN221	A221	CAN24-0148500-0001.C221	Black plastic (plug overmold)
SN222	A222	CAN24-0148500-0001.C222	Black plastic cover
SN223	A223	CAN24-0148500-0001.C223	Silvery metal pin
SN224	A224	CAN24-0148500-0001.C224	Black plastic part
SN225	A225	CAN24-0148500-0001.C225	White ceramic tube with black printing
SN226	A226	CAN24-0148500-0001.C226	Silvery metal part
SN227	A227	CAN24-0148500-0001.C227	Beige material
SN228	A228	CAN24-0148500-0001.C228	Silvery metal wire



Unless otherwise agreed in writing, this document is issued by the Company subject to its General Conditions of Service printed overleaf, available on request or accessible at <https://www.sgs.com/en/Terms-and-Conditions>. Attention is drawn to the limitation of liability, indemnification and jurisdiction issues defined therein. Any holder of this document is advised that information contained hereon reflects the Company's findings at the time of its intervention only and within the limits of Client's instructions, if any. The Company's sole responsibility is to its Client and this document does not exonerate parties to a transaction from exercising all their rights and obligations under the transaction documents. This document cannot be reproduced except in full, without prior written approval of the Company. Any unauthorized alteration, forgery or falsification of the content or appearance of this document is unlawful and offenders may be prosecuted to the fullest extent of the law. Unless otherwise stated the results shown in this test report refer only to the sample(s) tested.

**Attention: To check the authenticity of testing / inspection report & certificate, please contact us at telephone: (86-755) 8307 1443, or email: [CN.Doccheck@sgs.com](mailto:CN.Doccheck@sgs.com)**

SN ID	Sample No.	SGS Sample ID	Description
SN229	A229	CAN24-0148500-0001.C229	Silvery metal part
SN230	A230	CAN24-0148500-0001.C230	Silvery metal cover
SN231	A231	CAN24-0148500-0001.C231	White plastic part
SN232	A232	CAN24-0148500-0001.C232	Golden metal part
SN233	A233	CAN24-0148500-0001.C233	Silvery metal pin
SN234	A234	CAN24-0148500-0001.C234	Black plastic (plug overmold)
SN235	A235	CAN24-0148500-0001.C235	Silvery metal pin
SN236	A236	CAN24-0148500-0001.C236	Black plastic part
SN237	A237	CAN24-0148500-0001.C237	Black plastic (plug overmold)
SN238	A238	CAN24-0148500-0001.C238	White plastic part
SN239	A239	CAN24-0148500-0001.C239	Silvery metal pin
SN240	A240	CAN24-0148500-0001.C240	Black plastic part
SN241	A241	CAN24-0148500-0001.C241	Black plastic (plug overmold)



SGS-CSTC Standards Technical Services Co., Ltd.  
Guangzhou Branch / Technical Laboratory

Unless otherwise agreed in writing, this document is issued by the Company subject to its General Conditions of Service printed overleaf, available on request or accessible at <https://www.sgs.com/en/Terms-and-Conditions>. Attention is drawn to the limitation of liability, indemnification and jurisdiction issues defined therein. Any holder of this document is advised that information contained hereon reflects the Company's findings at the time of its intervention only and within the limits of Client's instructions, if any. The Company's sole responsibility is to its Client and this document does not exonerate parties to a transaction from exercising all their rights and obligations under the transaction documents. This document cannot be reproduced except in full, without prior written approval of the Company. Any unauthorized alteration, forgery or falsification of the content or appearance of this document is unlawful and offenders may be prosecuted to the fullest extent of the law. Unless otherwise stated the results shown in this test report refer only to the sample(s) tested.

Attention: To check the authenticity of testing / inspection report & certificate, please contact us at telephone: (86-755) 8307 1443, or email: [CN.Doccheck@sgs.com](mailto:CN.Doccheck@sgs.com)

No.198, Kezhu Road, Science City, Economic & Technological Development Area, Guangzhou, Guangdong, China 510663  
中国·广东·广州高新技术产业开发区科学城科珠路198号 邮编: 510663

t (86-20) 82155555 [www.sgsgroup.com.cn](http://www.sgsgroup.com.cn)  
t (86-20) 82155555 [sgs.china@sgs.com](mailto:sgs.china@sgs.com)



### Verification Result(s):

Unless otherwise specified, the unit is mg/kg.

Test Item(s)	A1	A2	A3	A4	A5	A6	A7	A8
Pb	BL	BL	BL	BL	BL	BL	BL	BL
Hg	BL	BL	BL	BL	BL	BL	BL	BL
Cd	BL	BL	BL	BL	BL	BL	BL	BL
Cr(VI)▼	BL	BL	BL	BL	BL	BL	BL	ND
PBB	BL	BL	BL	BL	BL	---	BL	---
PBDE	BL	BL	BL	BL	BL	---	BL	---
DEHP	BL	BL	BL	ND	ND	---	BL	---
BBP	BL	BL	BL	ND	ND	---	BL	---
DBP	BL	BL	BL	ND	ND	---	BL	---
DIBP	BL	BL	BL	ND	ND	---	BL	---
Conclusion	PASS	PASS	PASS	PASS	PASS	PASS	PASS	PASS

Test Item(s)	A9	A10	A11	A12	A13	A14	A15	A16
Pb	BL	BL	BL	BL	BL	BL	BL	BL
Hg	BL	BL	BL	BL	BL	BL	BL	BL
Cd	BL	BL	BL	BL	BL	BL	BL	BL
Cr(VI)▼	BL	BL	BL	BL	BL	BL	BL	BL
PBB	BL	BL	---	BL	BL	ND	BL	BL
PBDE	BL	BL	---	BL	BL	ND	BL	BL
DEHP	BL	ND	---	ND	BL	ND	BL	BL
BBP	BL	ND	---	ND	BL	ND	BL	BL
DBP	BL	ND	---	ND	BL	ND	BL	BL
DIBP	BL	ND	---	ND	BL	ND	BL	BL
Conclusion	PASS	PASS	PASS	PASS	PASS	PASS	PASS	PASS

Test Item(s)	A17	A18	A19	A20	A21	A22	A23	A24
Pb	BL	BL	BL	BL	BL	BL	BL	BL
Hg	BL	BL	BL	BL	BL	BL	BL	BL
Cd	BL	BL	BL	BL	BL	BL	BL	BL
Cr(VI)▼	BL	BL	BL	BL	<100*	BL	BL	BL
PBB	BL	BL	BL	BL	BL	BL	BL	BL
PBDE	BL	BL	BL	BL	BL	BL	BL	BL
DEHP	BL	BL	BL	BL	BL	BL	BL	BL
BBP	BL	BL	BL	BL	BL	BL	BL	BL
DBP	BL	BL	BL	BL	BL	BL	BL	BL
DIBP	BL	BL	BL	BL	BL	BL	BL	BL
Conclusion	PASS	PASS	PASS	PASS	PASS	PASS	PASS	PASS

Test Item(s)	A25	A26	A27	A28	A29	A30	A31	A32
Pb	BL	BL	BL	BL	BL	BL	BL	BL
Hg	BL	BL	BL	BL	BL	BL	BL	BL
Cd	BL	BL	BL	BL	BL	BL	BL	BL
Cr(VI)▼	BL	BL	BL	BL	ND	ND	BL	ND
PBB	BL	BL	ND	---	---	---	BL	---



SGS-CT Standards Technical Service Co., Ltd.  
Guangzhou Branch of SGS-CT Standards Technical Laboratory

Unless otherwise agreed in writing, this document is issued by the Company subject to its General Conditions of Service printed overleaf, available on request or accessible at <https://www.sgs.com/en/Terms-and-Conditions>. Attention is drawn to the limitation of liability, indemnification and jurisdiction issues defined therein. Any holder of this document is advised that information contained hereon reflects the Company's findings at the time of its intervention only and within the limits of Client's instructions, if any. The Company's sole responsibility is to its Client and this document does not exonerate parties to a transaction from exercising all their rights and obligations under the transaction documents. This document cannot be reproduced except in full, without prior written approval of the Company. Any unauthorized alteration, forgery or falsification of the content or appearance of this document is unlawful and offenders may be prosecuted to the fullest extent of the law. Unless otherwise stated the results shown in this test report refer only to the sample(s) tested.  
Attention: To check the authenticity of testing / inspection report & certificate, please contact us at telephone: (86-755) 8307 1443, or email: [CN.Doccheck@sgs.com](mailto:CN.Doccheck@sgs.com)

No.198, Kezhu Road, Science City, Economic & Technological Development Area, Guangzhou, Guangdong, China 510663  
中国·广东·广州高新技术产业开发区科学城科珠路198号 邮编: 510663

t (86-20) 82155555 www.sgsgroup.com.cn  
t (86-20) 82155555 sgs.china@sgs.com

Test Item(s)	A25	A26	A27	A28	A29	A30	A31	A32
PBDE	BL	BL	ND	---	---	---	BL	---
DEHP	BL	ND	ND	---	---	---	BL	---
BBP	BL	ND	ND	---	---	---	BL	---
DBP	BL	ND	ND	---	---	---	BL	---
DIBP	BL	ND	ND	---	---	---	BL	---
Conclusion	PASS	PASS	PASS	PASS	PASS	PASS	PASS	PASS

Test Item(s)	A33	A34	A35	A36	A37	A38	A39	A40
Pb	BL	BL	BL	BL	BL	BL	BL	BL
Hg	BL	BL	BL	BL	BL	BL	BL	BL
Cd	BL	BL	BL	BL	BL	BL	BL	BL
Cr(VI)▼	ND	ND	ND	ND	BL	BL	BL	BL
PBB	---	---	---	---	BL	---	BL	---
PBDE	---	---	---	---	BL	---	BL	---
DEHP	---	---	---	---	BL	---	BL	---
BBP	---	---	---	---	BL	---	BL	---
DBP	---	---	---	---	BL	---	BL	---
DIBP	---	---	---	---	BL	---	BL	---
Conclusion	PASS	PASS	PASS	PASS	PASS	PASS	PASS	PASS

Test Item(s)	A41	A42	A43	A44	A45	A46	A47	A48
Pb	BL	BL	BL	BL	BL	BL	BL	BL
Hg	BL	BL	BL	BL	BL	BL	BL	BL
Cd	BL	BL	BL	BL	BL	BL	BL	BL
Cr(VI)▼	BL	BL	BL	BL	BL	BL	BL	BL
PBB	---	---	BL	---	---	BL	---	---
PBDE	---	---	BL	---	---	BL	---	---
DEHP	---	---	BL	---	---	BL	---	---
BBP	---	---	BL	---	---	BL	---	---
DBP	---	---	BL	---	---	BL	---	---
DIBP	---	---	BL	---	---	BL	---	---
Conclusion	PASS	PASS	PASS	PASS	PASS	PASS	PASS	PASS

Test Item(s)	A49	A50	A51	A52	A53	A54	A55	A56
Pb	BL	BL	BL	BL	BL	BL	BL	BL
Hg	BL	BL	BL	BL	BL	BL	BL	BL
Cd	BL	BL	BL	BL	BL	BL	BL	BL
Cr(VI)▼	BL	BL	BL	BL	BL	BL	BL	BL
PBB	---	BL	---	BL	---	BL	BL	---
PBDE	---	BL	---	BL	---	BL	BL	---
DEHP	---	BL	---	BL	---	BL	BL	---
BBP	---	BL	---	BL	---	BL	BL	---
DBP	---	BL	---	BL	---	BL	BL	---
DIBP	---	BL	---	BL	---	BL	BL	---
Conclusion	PASS	PASS	PASS	PASS	PASS	PASS	PASS	PASS



SGS-CST Standards Technical Service Co., Ltd.  
Guangzhou Branch / 广州分公司  
Guangzhou Branch / 广州分公司

Unless otherwise agreed in writing, this document is issued by the Company subject to its General Conditions of Service printed overleaf, available on request or accessible at <https://www.sgs.com/en/Terms-and-Conditions>. Attention is drawn to the limitation of liability, indemnification and jurisdiction issues defined therein. Any holder of this document is advised that information contained hereon reflects the Company's findings at the time of its intervention only and within the limits of Client's instructions, if any. The Company's sole responsibility is to its Client and this document does not exonerate parties to a transaction from exercising all their rights and obligations under the transaction documents. This document cannot be reproduced except in full, without prior written approval of the Company. Any unauthorized alteration, forgery or falsification of the content or appearance of this document is unlawful and offenders may be prosecuted to the fullest extent of the law. Unless otherwise stated the results shown in this test report refer only to the sample(s) tested.  
**Attention: To check the authenticity of testing / inspection report & certificate, please contact us at telephone: (86-755) 8307 1443, or email: CN.Doccheck@sgs.com**

No.198, Kezhu Road, Science City, Economic & Technological Development Area, Guangzhou, Guangdong, China 510663  
中国·广东·广州高新技术产业开发区科学城科珠路198号 邮编: 510663

t (86-20) 82155555 www.sgsgroup.com.cn  
t (86-20) 82155555 sgs.china@sgs.com

Test Item(s)	A57	A58	A59	A60	A61	A62	A63	A64
Pb	BL	BL	BL	BL	BL	BL	BL	BL
Hg	BL	BL	BL	BL	BL	BL	BL	BL
Cd	BL	BL	BL	BL	BL	BL	BL	BL
Cr(VI)▼	BL	BL	BL	BL	BL	BL	BL	BL
PBB	BL	BL	BL	BL	BL	---	BL	BL
PBDE	BL	BL	BL	BL	BL	---	BL	BL
DEHP	ND	BL	BL	---	BL	---	BL	BL
BBP	ND	BL	BL	---	BL	---	BL	BL
DBP	ND	BL	BL	---	BL	---	BL	BL
DIBP	ND	BL	BL	---	BL	---	BL	BL
Conclusion	PASS	PASS	PASS	PASS	PASS	PASS	PASS	PASS

Test Item(s)	A65	A66	A67	A68	A69	A70	A71	A72
Pb	BL	BL	BL	BL	BL	BL	BL	BL
Hg	BL	BL	BL	BL	BL	BL	BL	BL
Cd	BL	BL	BL	BL	BL	BL	BL	BL
Cr(VI)▼	BL	BL	BL	BL	BL	BL	BL	BL
PBB	BL	BL	BL	BL	---	---	BL	BL
PBDE	BL	BL	BL	BL	---	---	BL	BL
DEHP	BL	BL	ND	ND	---	---	BL	BL
BBP	BL	BL	ND	ND	---	---	BL	BL
DBP	BL	BL	ND	ND	---	---	BL	BL
DIBP	BL	BL	ND	ND	---	---	BL	BL
Conclusion	PASS	PASS	PASS	PASS	PASS	PASS	PASS	PASS

Test Item(s)	A73	A74	A75	A76	A77	A78	A79	A80
Pb	BL	BL	BL	BL	BL	BL	BL	BL
Hg	BL	BL	BL	BL	BL	BL	BL	BL
Cd	BL	BL	BL	BL	BL	BL	BL	BL
Cr(VI)▼	BL	BL	BL	BL	BL	BL	BL	BL
PBB	BL	BL	BL	---	ND	ND	BL	BL
PBDE	BL	BL	BL	---	ND	ND	BL	BL
DEHP	BL	BL	BL	---	ND	ND	ND	ND
BBP	BL	BL	BL	---	ND	ND	ND	ND
DBP	BL	BL	BL	---	ND	ND	ND	ND
DIBP	BL	BL	BL	---	ND	ND	ND	ND
Conclusion	PASS	PASS	PASS	PASS	PASS	PASS	PASS	PASS

Test Item(s)	A81	A82	A83	A84	A85	A86	A87	A88
Pb	BL	BL	BL	BL	BL	BL	BL	BL
Hg	BL	BL	BL	BL	BL	BL	BL	BL
Cd	BL	BL	BL	BL	BL	BL	BL	BL
Cr(VI)▼	BL	BL	BL	BL	BL	BL	BL	BL
PBB	BL	BL	BL	BL	BL	BL	BL	BL
PBDE	BL	BL	BL	BL	BL	BL	BL	BL



Unless otherwise agreed in writing, this document is issued by the Company subject to its General Conditions of Service printed overleaf, available on request or accessible at <https://www.sgs.com/en/Terms-and-Conditions>. Attention is drawn to the limitation of liability, indemnification and jurisdiction issues defined therein. Any holder of this document is advised that information contained hereon reflects the Company's findings at the time of its intervention only and within the limits of Client's instructions, if any. The Company's sole responsibility is to its Client and this document does not exonerate parties to a transaction from exercising all their rights and obligations under the transaction documents. This document cannot be reproduced except in full, without prior written approval of the Company. Any unauthorized alteration, forgery or falsification of the content or appearance of this document is unlawful and offenders may be prosecuted to the fullest extent of the law. Unless otherwise stated the results shown in this test report refer only to the sample(s) tested.

Attention: To check the authenticity of testing / inspection report & certificate, please contact us at telephone: (86-755) 8307 1443, or email: [CN.Doccheck@sgs.com](mailto:CN.Doccheck@sgs.com)



Test Item(s)	A81	A82	A83	A84	A85	A86	A87	A88
DEHP	---	BL	ND	BL	ND	BL	ND	ND
BBP	---	BL	ND	BL	ND	BL	ND	ND
DBP	---	BL	ND	BL	ND	BL	ND	ND
DIBP	---	BL	ND	BL	ND	BL	ND	ND
Conclusion	PASS	PASS	PASS	PASS	PASS	PASS	PASS	PASS

Test Item(s)	A89	A90	A91	A92	A93	A94	A95	A96
Pb	BL	BL	BL	BL	BL	BL	BL	BL
Hg	BL	BL	BL	BL	BL	BL	BL	BL
Cd	BL	BL	BL	BL	BL	BL	BL	BL
Cr(VI)▼	BL	BL	BL	BL	BL	BL	BL	BL
PBB	BL	---	BL	BL	ND	BL	BL	BL
PBDE	BL	---	BL	BL	ND	BL	BL	BL
DEHP	BL	---	BL	BL	ND	ND	BL	ND
BBP	BL	---	BL	BL	ND	ND	BL	ND
DBP	BL	---	BL	BL	ND	ND	BL	ND
DIBP	BL	---	BL	BL	ND	ND	BL	ND
Conclusion	PASS	PASS	PASS	PASS	PASS	PASS	PASS	PASS

Test Item(s)	A97	A98	A99	A100	A101	A102	A103	A104
Pb	BL	BL	BL	BL	BL	BL	BL	BL
Hg	BL	BL	BL	BL	BL	BL	BL	BL
Cd	BL	BL	BL	BL	BL	BL	BL	BL
Cr(VI)▼	BL	BL	BL	BL	BL	BL	BL	BL
PBB	BL	---	---	BL	BL	BL	BL	---
PBDE	BL	---	---	BL	BL	BL	BL	---
DEHP	ND	---	---	BL	ND	BL	BL	---
BBP	ND	---	---	BL	ND	BL	BL	---
DBP	ND	---	---	BL	ND	BL	BL	---
DIBP	ND	---	---	BL	ND	BL	BL	---
Conclusion	PASS	PASS	PASS	PASS	PASS	PASS	PASS	PASS

Test Item(s)	A105	A106	A107	A108	A109	A110	A111	A112
Pb	BL	BL	BL	7539▲	BL	BL	BL	BL
Hg	BL	BL	BL	BL	BL	BL	BL	BL
Cd	BL	BL	BL	BL	BL	BL	BL	BL
Cr(VI)▼	BL	ND	BL	BL	BL	BL	ND	BL
PBB	ND	BL	---	ND	BL	BL	---	---
PBDE	ND	BL	---	ND	BL	BL	---	---
DEHP	ND	BL	---	BL	BL	BL	---	---
BBP	ND	BL	---	BL	BL	BL	---	---
DBP	ND	BL	---	BL	BL	BL	---	---
DIBP	ND	BL	---	BL	BL	BL	---	---
Conclusion	PASS	PASS	PASS	PASS	PASS	PASS	PASS	PASS



SGS-CSI Standards Technical Service Co., Ltd.  
Guangzhou Branch Technical Laboratory

Unless otherwise agreed in writing, this document is issued by the Company subject to its General Conditions of Service printed overleaf, available on request or accessible at <https://www.sgs.com/en/Terms-and-Conditions>. Attention is drawn to the limitation of liability, indemnification and jurisdiction issues defined therein. Any holder of this document is advised that information contained hereon reflects the Company's findings at the time of its intervention only and within the limits of Client's instructions, if any. The Company's sole responsibility is to its Client and this document does not exonerate parties to a transaction from exercising all their rights and obligations under the transaction documents. This document cannot be reproduced except in full, without prior written approval of the Company. Any unauthorized alteration, forgery or falsification of the content or appearance of this document is unlawful and offenders may be prosecuted to the fullest extent of the law. Unless otherwise stated the results shown in this test report refer only to the sample(s) tested.  
**Attention: To check the authenticity of testing / inspection report & certificate, please contact us at telephone: (86-755) 8307 1443, or email: [CN.Doccheck@sgs.com](mailto:CN.Doccheck@sgs.com)**

No.198, Kezhu Road, Science City, Economic & Technological Development Area, Guangzhou, Guangdong, China 510663  
中国·广东·广州高新技术产业开发区科学城科珠路198号 邮编: 510663

t (86-20) 82155555 [www.sgsgroup.com.cn](http://www.sgsgroup.com.cn)  
t (86-20) 82155555 [sgs.china@sgs.com](mailto:sgs.china@sgs.com)

Test Item(s)	A113	A114	A115	A116	A117	A118	A119	A120
Pb	BL	BL	BL	BL	BL	BL	BL	BL
Hg	BL	BL	BL	BL	BL	BL	BL	BL
Cd	BL	BL	BL	BL	BL	BL	BL	BL
Cr(VI)▼	BL	BL	BL	BL	BL	BL	BL	BL
PBB	BL	---	---	BL	BL	BL	---	---
PBDE	BL	---	---	BL	BL	BL	---	---
DEHP	BL	---	---	ND	ND	ND	---	---
BBP	BL	---	---	ND	ND	ND	---	---
DBP	BL	---	---	ND	ND	ND	---	---
DIBP	BL	---	---	ND	ND	ND	---	---
Conclusion	PASS	PASS	PASS	PASS	PASS	PASS	PASS	PASS

Test Item(s)	A121	A122	A123	A124	A125	A126	A127	A128
Pb	BL	BL	BL	BL	BL	BL	BL	BL
Hg	BL	BL	BL	BL	BL	BL	BL	BL
Cd	BL	BL	BL	BL	BL	BL	BL	BL
Cr(VI)▼	BL	BL	BL	BL	BL	BL	BL	BL
PBB	BL	BL	ND	BL	BL	ND	BL	BL
PBDE	BL	BL	ND	BL	BL	ND	BL	BL
DEHP	BL	ND	ND	BL	BL	ND	ND	BL
BBP	BL	ND	ND	BL	BL	ND	ND	BL
DBP	BL	ND	ND	BL	BL	ND	ND	BL
DIBP	BL	ND	ND	BL	BL	ND	ND	BL
Conclusion	PASS	PASS	PASS	PASS	PASS	PASS	PASS	PASS

Test Item(s)	A129	A130	A131	A132	A133	A134	A135	A136
Pb	BL	BL	BL	BL	BL	BL	BL	13137▲
Hg	BL	BL	BL	BL	BL	BL	BL	BL
Cd	BL	BL	BL	BL	BL	BL	BL	BL
Cr(VI)▼	BL	BL	BL	BL	BL	BL	BL	BL
PBB	BL	BL	---	---	ND	BL	---	BL
PBDE	BL	BL	---	---	ND	BL	---	BL
DEHP	BL	BL	---	---	ND	BL	---	BL
BBP	BL	BL	---	---	ND	BL	---	BL
DBP	BL	BL	---	---	ND	BL	---	BL
DIBP	BL	BL	---	---	ND	BL	---	BL
Conclusion	PASS	PASS	PASS	PASS	PASS	PASS	PASS	PASS

Test Item(s)	A137	A138	A139	A140	A141	A142	A143	A144
Pb	BL	74269▲	BL	242960▲	35762▲	BL	BL	27648▲
Hg	BL	BL	BL	BL	BL	BL	BL	BL
Cd	BL	BL	BL	BL	BL	BL	BL	BL
Cr(VI)▼	BL	BL	BL	BL	BL	BL	BL	BL
PBB	BL	BL	BL	ND	BL	BL	BL	BL
PBDE	BL	BL	BL	ND	BL	BL	BL	BL
DEHP	ND	BL	BL	BL	BL	BL	BL	BL



Unless otherwise agreed in writing, this document is issued by the Company subject to its General Conditions of Service printed overleaf, available on request or accessible at <https://www.sgs.com/en/Terms-and-Conditions>. Attention is drawn to the limitation of liability, indemnification and jurisdiction issues defined therein. Any holder of this document is advised that information contained hereon reflects the Company's findings at the time of its intervention only and within the limits of Client's instructions, if any. The Company's sole responsibility is to its Client and this document does not exonerate parties to a transaction from exercising all their rights and obligations under the transaction documents. This document cannot be reproduced except in full, without prior written approval of the Company. Any unauthorized alteration, forgery or falsification of the content or appearance of this document is unlawful and offenders may be prosecuted to the fullest extent of the law. Unless otherwise stated the results shown in this test report refer only to the sample(s) tested.

Attention: To check the authenticity of testing / inspection report & certificate, please contact us at telephone: (86-755) 8307 1443, or email: [CN.Doccheck@sgs.com](mailto:CN.Doccheck@sgs.com)

Test Item(s)	A137	A138	A139	A140	A141	A142	A143	A144
BBP	ND	BL	BL	BL	BL	BL	BL	BL
DBP	ND	BL	BL	BL	BL	BL	BL	BL
DIBP	ND	BL	BL	BL	BL	BL	BL	BL
Conclusion	PASS	PASS	PASS	PASS	PASS	PASS	PASS	PASS

Test Item(s)	A145	A146	A147	A148	A149	A150	A151	A152
Pb	12959▲	BL	BL	BL	67973▲	BL	BL	35246▲
Hg	BL	BL	BL	BL	BL	BL	BL	BL
Cd	BL	BL	BL	BL	BL	BL	BL	BL
Cr(VI)▼	BL	BL	BL	BL	BL	BL	BL	BL
PBB	BL	BL	BL	BL	BL	ND	BL	BL
PBDE	BL	BL	BL	BL	BL	ND	BL	BL
DEHP	BL	BL	BL	BL	BL	ND	BL	BL
BBP	BL	BL	BL	BL	BL	ND	BL	BL
DBP	BL	BL	BL	BL	BL	ND	BL	BL
DIBP	BL	BL	BL	BL	BL	ND	BL	BL
Conclusion	PASS	PASS	PASS	PASS	PASS	PASS	PASS	PASS

Test Item(s)	A153	A154	A155	A156	A157	A158	A159	A160
Pb	BL	BL	BL	BL	BL	BL	BL	BL
Hg	BL	BL	BL	BL	BL	BL	BL	BL
Cd	BL	BL	BL	BL	BL	BL	BL	BL
Cr(VI)▼	BL	BL	BL	BL	ND	BL	BL	BL
PBB	---	ND	BL	---	---	BL	BL	ND
PBDE	---	ND	BL	---	---	BL	BL	ND
DEHP	---	ND	BL	---	---	ND	BL	ND
BBP	---	ND	BL	---	---	ND	BL	ND
DBP	---	ND	BL	---	---	ND	BL	ND
DIBP	---	ND	BL	---	---	ND	BL	ND
Conclusion	PASS	PASS	PASS	PASS	PASS	PASS	PASS	PASS

Test Item(s)	A161	A162	A163	A164	A165	A166	A167	A168
Pb	BL	BL	BL	BL	BL	BL	BL	BL
Hg	BL	BL	BL	BL	BL	BL	BL	BL
Cd	BL	BL	BL	BL	BL	BL	BL	BL
Cr(VI)▼	BL	BL	BL	BL	BL	BL	BL	BL
PBB	BL	BL	BL	BL	---	---	---	---
PBDE	BL	BL	BL	BL	---	---	---	---
DEHP	BL	BL	ND	ND	---	---	---	---
BBP	BL	BL	ND	ND	---	---	---	---
DBP	BL	BL	ND	ND	---	---	---	---
DIBP	BL	BL	ND	ND	---	---	---	---
Conclusion	PASS	PASS	PASS	PASS	PASS	PASS	PASS	PASS



SGS-CSI Standards Technical Service Co., Ltd.  
Guangzhou Branch Technical Laboratory

Unless otherwise agreed in writing, this document is issued by the Company subject to its General Conditions of Service printed overleaf, available on request or accessible at <https://www.sgs.com/en/Terms-and-Conditions>. Attention is drawn to the limitation of liability, indemnification and jurisdiction issues defined therein. Any holder of this document is advised that information contained hereon reflects the Company's findings at the time of its intervention only and within the limits of Client's instructions, if any. The Company's sole responsibility is to its Client and this document does not exonerate parties to a transaction from exercising all their rights and obligations under the transaction documents. This document cannot be reproduced except in full, without prior written approval of the Company. Any unauthorized alteration, forgery or falsification of the content or appearance of this document is unlawful and offenders may be prosecuted to the fullest extent of the law. Unless otherwise stated the results shown in this test report refer only to the sample(s) tested.  
**Attention: To check the authenticity of testing / inspection report & certificate, please contact us at telephone: (86-755) 8307 1443, or email: [CN.Doccheck@sgs.com](mailto:CN.Doccheck@sgs.com)**

No.198, Kezhu Road, Science City, Economic & Technological Development Area, Guangzhou, Guangdong, China 510663  
中国·广东·广州高新技术产业开发区科学城科珠路198号 邮编: 510663

t (86-20) 82155555 [www.sgsgroup.com.cn](http://www.sgsgroup.com.cn)  
t (86-20) 82155555 [sgs.china@sgs.com](mailto:sgs.china@sgs.com)



Test Item(s)	A169	A170	A171	A172	A173	A174	A175	A176
Pb	BL	BL	BL	BL	BL	BL	BL	BL
Hg	BL	BL	BL	BL	BL	BL	BL	BL
Cd	BL	BL	BL	BL	BL	BL	BL	BL
Cr(VI)▼	BL	BL	BL	BL	BL	BL	BL	BL
PBB	BL	---	BL	---	BL	BL	BL	BL
PBDE	BL	---	BL	---	BL	BL	BL	BL
DEHP	ND	---	BL	---	ND	ND	ND	ND
BBP	ND	---	BL	---	ND	ND	ND	ND
DBP	ND	---	BL	---	ND	ND	ND	ND
DIBP	ND	---	BL	---	ND	ND	ND	ND
Conclusion	PASS	PASS	PASS	PASS	PASS	PASS	PASS	PASS

Test Item(s)	A177	A178	A179	A180	A181	A182	A183	A184
Pb	BL	BL	BL	BL	BL	BL	BL	BL
Hg	BL	BL	BL	BL	BL	BL	BL	BL
Cd	BL	BL	BL	BL	BL	BL	BL	BL
Cr(VI)▼	BL	BL	BL	BL	BL	BL	BL	BL
PBB	BL	BL	BL	BL	BL	BL	BL	BL
PBDE	BL	BL	BL	BL	BL	BL	BL	BL
DEHP	ND	ND	ND	ND	ND	BL	BL	BL
BBP	ND	ND	ND	ND	ND	BL	BL	BL
DBP	ND	ND	ND	ND	ND	BL	BL	BL
DIBP	ND	ND	ND	ND	ND	BL	BL	BL
Conclusion	PASS	PASS	PASS	PASS	PASS	PASS	PASS	PASS

Test Item(s)	A185	A186	A187	A188	A189	A190	A191	A192
Pb	BL	BL	BL	BL	BL	BL	BL	BL
Hg	BL	BL	BL	BL	BL	BL	BL	BL
Cd	BL	BL	BL	BL	BL	BL	BL	BL
Cr(VI)▼	BL	BL	ND	BL	ND	BL	BL	BL
PBB	BL	BL	---	BL	---	BL	---	ND
PBDE	BL	BL	---	BL	---	BL	---	ND
DEHP	BL	BL	---	BL	---	ND	---	ND
BBP	BL	BL	---	BL	---	ND	---	ND
DBP	BL	BL	---	BL	---	ND	---	ND
DIBP	BL	BL	---	BL	---	ND	---	ND
Conclusion	PASS	PASS	PASS	PASS	PASS	PASS	PASS	PASS

Test Item(s)	A193	A194	A195	A196	A197	A198	A199	A200
Pb	BL	BL	BL	BL	BL	BL	BL	BL
Hg	BL	BL	BL	BL	BL	BL	BL	BL
Cd	BL	BL	BL	BL	BL	BL	BL	BL
Cr(VI)▼	BL	BL	ND	BL	BL	BL	BL	BL
PBB	---	BL	---	---	BL	---	ND	BL
PBDE	---	BL	---	---	BL	---	ND	BL
DEHP	---	BL	---	---	BL	---	ND	ND



SGS-CST Standards Technical Service Co., Ltd.  
Guangzhou Branch Technical Laboratory

Unless otherwise agreed in writing, this document is issued by the Company subject to its General Conditions of Service printed overleaf, available on request or accessible at <https://www.sgs.com/en/Terms-and-Conditions>. Attention is drawn to the limitation of liability, indemnification and jurisdiction issues defined therein. Any holder of this document is advised that information contained hereon reflects the Company's findings at the time of its intervention only and within the limits of Client's instructions, if any. The Company's sole responsibility is to its Client and this document does not exonerate parties to a transaction from exercising all their rights and obligations under the transaction documents. This document cannot be reproduced except in full, without prior written approval of the Company. Any unauthorized alteration, forgery or falsification of the content or appearance of this document is unlawful and offenders may be prosecuted to the fullest extent of the law. Unless otherwise stated the results shown in this test report refer only to the sample(s) tested.  
**Attention: To check the authenticity of testing / inspection report & certificate, please contact us at telephone: (86-755) 8307 1443, or email: CN.Doccheck@sgs.com**

No.198, Kezhu Road, Science City, Economic & Technological Development Area, Guangzhou, Guangdong, China 510663  
中国·广东·广州高新技术产业开发区科学城科珠路198号 邮编: 510663

t (86-20) 82155555 www.sgsgroup.com.cn  
t (86-20) 82155555 sgs.china@sgs.com

Test Item(s)	A193	A194	A195	A196	A197	A198	A199	A200
BBP	---	BL	---	---	BL	---	ND	ND
DBP	---	BL	---	---	BL	---	ND	ND
DIBP	---	BL	---	---	BL	---	ND	ND
Conclusion	PASS	PASS	PASS	PASS	PASS	PASS	PASS	PASS

Test Item(s)	A201	A202	A203	A204	A205	A206	A207	A208
Pb	BL	BL	BL	BL	BL	BL	BL	BL
Hg	BL	BL	BL	BL	BL	BL	BL	BL
Cd	BL	BL	BL	BL	BL	BL	BL	BL
Cr(VI)▼	BL	BL	BL	BL	BL	BL	BL	BL
PBB	BL	BL	---	---	BL	ND	ND	BL
PBDE	BL	BL	---	---	BL	ND	ND	BL
DEHP	ND	ND	---	---	ND	ND	ND	BL
BBP	ND	ND	---	---	ND	ND	ND	BL
DBP	ND	ND	---	---	ND	ND	ND	BL
DIBP	ND	ND	---	---	ND	ND	ND	BL
Conclusion	PASS	PASS	PASS	PASS	PASS	PASS	PASS	PASS

Test Item(s)	A209	A210	A211	A212	A213	A214	A215	A216
Pb	BL	BL	BL	BL	BL	BL	BL	BL
Hg	BL	BL	BL	BL	BL	BL	BL	BL
Cd	BL	BL	BL	BL	BL	BL	BL	BL
Cr(VI)▼	BL	BL	BL	BL	BL	BL	BL	BL
PBB	---	BL	BL	---	ND	BL	BL	BL
PBDE	---	BL	BL	---	ND	BL	BL	BL
DEHP	---	ND	ND	---	ND	ND	ND	BL
BBP	---	ND	ND	---	ND	ND	ND	BL
DBP	---	ND	ND	---	ND	ND	ND	BL
DIBP	---	ND	ND	---	ND	ND	ND	BL
Conclusion	PASS	PASS	PASS	PASS	PASS	PASS	PASS	PASS

Test Item(s)	A217	A218	A219	A220	A221	A222	A223	A224
Pb	BL	BL	BL	BL	BL	BL	25282▲	BL
Hg	BL	BL	BL	BL	BL	BL	ND	BL
Cd	BL	BL	BL	BL	BL	BL	22	BL
Cr(VI)▼	BL	BL	BL	BL	BL	BL	BL	BL
PBB	ND	BL	BL	BL	BL	BL	---	ND
PBDE	ND	BL	BL	BL	BL	BL	---	ND
DEHP	ND	ND	ND	ND	ND	BL	---	ND
BBP	ND	ND	ND	ND	ND	BL	---	ND
DBP	ND	ND	ND	ND	ND	BL	---	ND
DIBP	ND	ND	ND	ND	ND	BL	---	ND
Conclusion	PASS	PASS	PASS	PASS	PASS	PASS	PASS	PASS



SGS-CSTC Standards Technical Services Co., Ltd.  
Guangzhou Branch / 广州分公司  
Guangzhou Branch / 广州分公司

Unless otherwise agreed in writing, this document is issued by the Company subject to its General Conditions of Service printed overleaf, available on request or accessible at <https://www.sgs.com/en/Terms-and-Conditions>. Attention is drawn to the limitation of liability, indemnification and jurisdiction issues defined therein. Any holder of this document is advised that information contained hereon reflects the Company's findings at the time of its intervention only and within the limits of Client's instructions, if any. The Company's sole responsibility is to its Client and this document does not exonerate parties to a transaction from exercising all their rights and obligations under the transaction documents. This document cannot be reproduced except in full, without prior written approval of the Company. Any unauthorized alteration, forgery or falsification of the content or appearance of this document is unlawful and offenders may be prosecuted to the fullest extent of the law. Unless otherwise stated the results shown in this test report refer only to the sample(s) tested.  
**Attention: To check the authenticity of testing / inspection report & certificate, please contact us at telephone: (86-755) 8307 1443, or email: [CN.Doccheck@sgs.com](mailto:CN.Doccheck@sgs.com)**

No.198, Kezhu Road, Science City, Economic & Technological Development Area, Guangzhou, Guangdong, China 510663  
中国·广东·广州高新技术产业开发区科学城科珠路198号 邮编: 510663

t (86-20) 82155555 [www.sgsgroup.com.cn](http://www.sgsgroup.com.cn)  
t (86-20) 82155555 [sgs.china@sgs.com](mailto:sgs.china@sgs.com)

Test Item(s)	A225	A226	A227	A228	A229	A230	A231	A232
Pb	BL	BL	BL	BL	BL	BL	BL	BL
Hg	BL	BL	BL	BL	BL	BL	BL	BL
Cd	BL	BL	BL	BL	BL	BL	BL	BL
Cr(VI)▼	BL	BL	BL	BL	BL	BL	BL	BL
PBB	BL	---	BL	---	---	---	BL	---
PBDE	BL	---	BL	---	---	---	BL	---
DEHP	BL	---	ND	---	---	---	BL	---
BBP	BL	---	ND	---	---	---	BL	---
DBP	BL	---	ND	---	---	---	BL	---
DIBP	BL	---	ND	---	---	---	BL	---
Conclusion	PASS	PASS	PASS	PASS	PASS	PASS	PASS	PASS

Test Item(s)	A233	A234	A235	A236	A237	A238	A239	A240
Pb	BL	BL	BL	BL	BL	BL	19286▲	BL
Hg	BL	BL	BL	BL	BL	BL	ND	BL
Cd	BL	BL	BL	BL	BL	BL	23	BL
Cr(VI)▼	BL	BL	BL	BL	BL	BL	BL	BL
PBB	---	BL	---	ND	BL	ND	---	ND
PBDE	---	BL	---	ND	BL	ND	---	ND
DEHP	---	ND	---	ND	ND	ND	---	ND
BBP	---	ND	---	ND	ND	ND	---	ND
DBP	---	ND	---	ND	ND	ND	---	ND
DIBP	---	ND	---	ND	ND	ND	---	ND
Conclusion	PASS	PASS	PASS	PASS	PASS	PASS	PASS	PASS

Test Item(s)	A241
Pb	BL
Hg	BL
Cd	BL
Cr(VI)▼	BL
PBB	BL
PBDE	BL
DEHP	ND
BBP	ND
DBP	ND
DIBP	ND
Conclusion	PASS





**Notes:**

(1) Interpretation of screening results by X-ray fluorescence spectrometry (XRF):

(a) Screening limits in mg/kg for regulated elements in various matrices according to IEC 62321-1:2013 Annex A as below table.

Element	Polymers	Metals	Composite Materials
Cd	$BL \leq (70-3\sigma) < X < (130+3\sigma) \leq OL$	$BL \leq (70-3\sigma) < X < (130+3\sigma) \leq OL$	$LOD < X < (150+3\sigma) \leq OL$
Pb	$BL \leq (700-3\sigma) < X < (1300+3\sigma) \leq OL$	$BL \leq (700-3\sigma) < X < (1300+3\sigma) \leq OL$	$BL \leq (500-3\sigma) < X < (1500+3\sigma) \leq OL$
Hg	$BL \leq (700-3\sigma) < X < (1300+3\sigma) \leq OL$	$BL \leq (700-3\sigma) < X < (1300+3\sigma) \leq OL$	$BL \leq (500-3\sigma) < X < (1500+3\sigma) \leq OL$
Br	$BL \leq (300-3\sigma) < X$	Not applicable	$BL \leq (250-3\sigma) < X$
Cr	$BL \leq (700-3\sigma) < X$	$BL \leq (700-3\sigma) < X$	$BL \leq (500-3\sigma) < X$

(b) If the maximum allowed level restricts PBB/PBDE and Cr(VI) rather than Br and Cr, the exceptions are the XRF determinations of Br and Cr. If the quantitative results for the elements Br and/or Cr are higher than the limit (for Br calculated based on the stoichiometry of Br in the most common congeners of PBB/PBDE), the sample is "inconclusive".

(c) Results are obtained by EDXRF for primary screening, LOD = Limit of Detection, BL = Below Limit, OL= Over Limit, IN (The symbol X marks the region)=Inconclusive, where further investigation is necessary, and further chemical testing by ICP-OES (for Cd, Pb, Hg), UV-Vis (for Cr(VI)) and GC-MS (for PBB/PBDE) are recommended to be performed.

(d) The EDXRF screening test for elements – The reading may be different to the actual content in the sample be of non-uniformity composition.

(2) Screening results of Phthalates (PHTH) below the limits are shown as "BL". Further chemical testing by GC-MS is to be performed if the results exceed limits.

Test Items	CAS No.
Bis(2-ethylhexyl) phthalate (DEHP)	117-81-7
Butyl benzyl phthalate (BBP)	85-68-7
Dibutyl phthalate (DBP)	84-74-2
Diisobutyl phthalate (DIBP)	84-69-5

(3) Interpretation of results by chemical tests:

(a) mg/kg = 0.0001%, MDL=Method detection Limit, ND = Not Detected (<MDL), --- = Not Applicable.

(b) Unit and MDL in wet chemical test

Test Items	Pb	Hg	Cd	DEHP	BBP	DBP	DIBP
Unit	mg/kg	mg/kg	mg/kg	mg/kg	mg/kg	mg/kg	mg/kg
MDL	10	10	10	100	100	100	100

The MDL for single compound of PBB and PBDE is 100 mg/kg,

MDL of Cr(VI) for polymer, composite and leather sample is 10 mg/kg.

MDL of Cr(VI) for metal sample is 0.10 µg/cm².

(c) ▼ =Metal sample

a. The sample is positive for Cr(VI) if the Cr(VI) concentration is greater than 0.13 µg/cm². The sample coating is considered to contain Cr(VI).

b. The sample is negative for Cr(VI) if Cr(VI) is ND (concentration less than 0.10 µg/cm²). The coating is considered a non-Cr(VI) based coating

c. The result between 0.10 µg/cm² and 0.13 µg/cm² is considered to be inconclusive-unavoidable coating variations may influence the determination

Information on storage conditions and production date of the tested sample is unavailable and thus



Unless otherwise agreed in writing, this document is issued by the Company subject to its General Conditions of Service printed overleaf, available on request or accessible at <https://www.sgs.com/en/Terms-and-Conditions>. Attention is drawn to the limitation of liability, indemnification and jurisdiction issues defined therein. Any holder of this document is advised that information contained hereon reflects the Company's findings at the time of its intervention only and within the limits of Client's instructions, if any. The Company's sole responsibility is to its Client and this document does not exonerate parties to a transaction from exercising all their rights and obligations under the transaction documents. This document cannot be reproduced except in full, without prior written approval of the Company. Any unauthorized alteration, forgery or falsification of the content or appearance of this document is unlawful and offenders may be prosecuted to the fullest extent of the law. Unless otherwise stated the results shown in this test report refer only to the sample(s) tested.  
Attention: To check the authenticity of testing /inspection report & certificate, please contact us at telephone: (86-755) 8307 1443, or email: [CN.Doccheck@sgs.com](mailto:CN.Doccheck@sgs.com)

Cr(VI) results represent status of the sample at the time of testing.

- (4) Restricted substances and maximum concentration values tolerated by weight in homogeneous materials under RoHS Directive: Cd: 0.01%, Pb/Hg/Cr(VI)/PBB/PBDE/DEHP/BBP/DBP/DIBP: 0.1%. The limit is quoted from RoHS Directive (EU) 2015/863.
- (5) IEC 62321 series is equivalent to EN 62321 series.

(6) \* =Considering insufficient sample amount, the Method Detection Limit (MDL) is raised appropriately.

(7)▲ = According to the declaration from the client,

Lead (Pb) in No.A140 is exempted by EU RoHS directive 2011/65/EU based on [ANNEX III 7(c)-I]: Electrical and electronic components containing lead in a glass or ceramic other than dielectric ceramic in capacitors, e.g. piezoelectronic devices, or in a glass or ceramic matrix compound.

Lead (Pb) in No.A108, No.A136, No.A138, No.A141, No.A144, No.A145, No.A149, No.A152 are exempted by EU RoHS directive 2011/65/EU based on [ANNEX III 7(a)]: Lead in high melting temperature type solders (i.e. lead-based alloys containing 85 % by weight or more lead).

Lead (Pb) in No.A223, No.A239 are exempted by EU RoHS directive 2011/65/EU based on [ANNEX III 6(c)]: Copper alloy containing up to 4 % lead by weight.

More information about exemption can be found via the following link:

<https://rohs.sgsonline.com.cn/PDFLinks/en/RSTS-TP-037%20RoHS%20Exemption%20%28EN%29.pdf>

The location of performance of the laboratory activities: A. No.198, Kezhu Road, Science City, Economic & Technological Development Area, Guangzhou, Guangdong; B. Room 101, Building 3, No.1501, Kaichuang Avenue, Huangpu District, Guangzhou, Guangdong

Unless otherwise stated, the decision rule for conformity reporting is based on Binary Statement for Simple Acceptance Rule ( $w=0$ ) stated in ILAC-G8:09/2019.



SGS-CSTC Standards Technical Services Co., Ltd.  
Guangzhou Branch Technical Laboratory

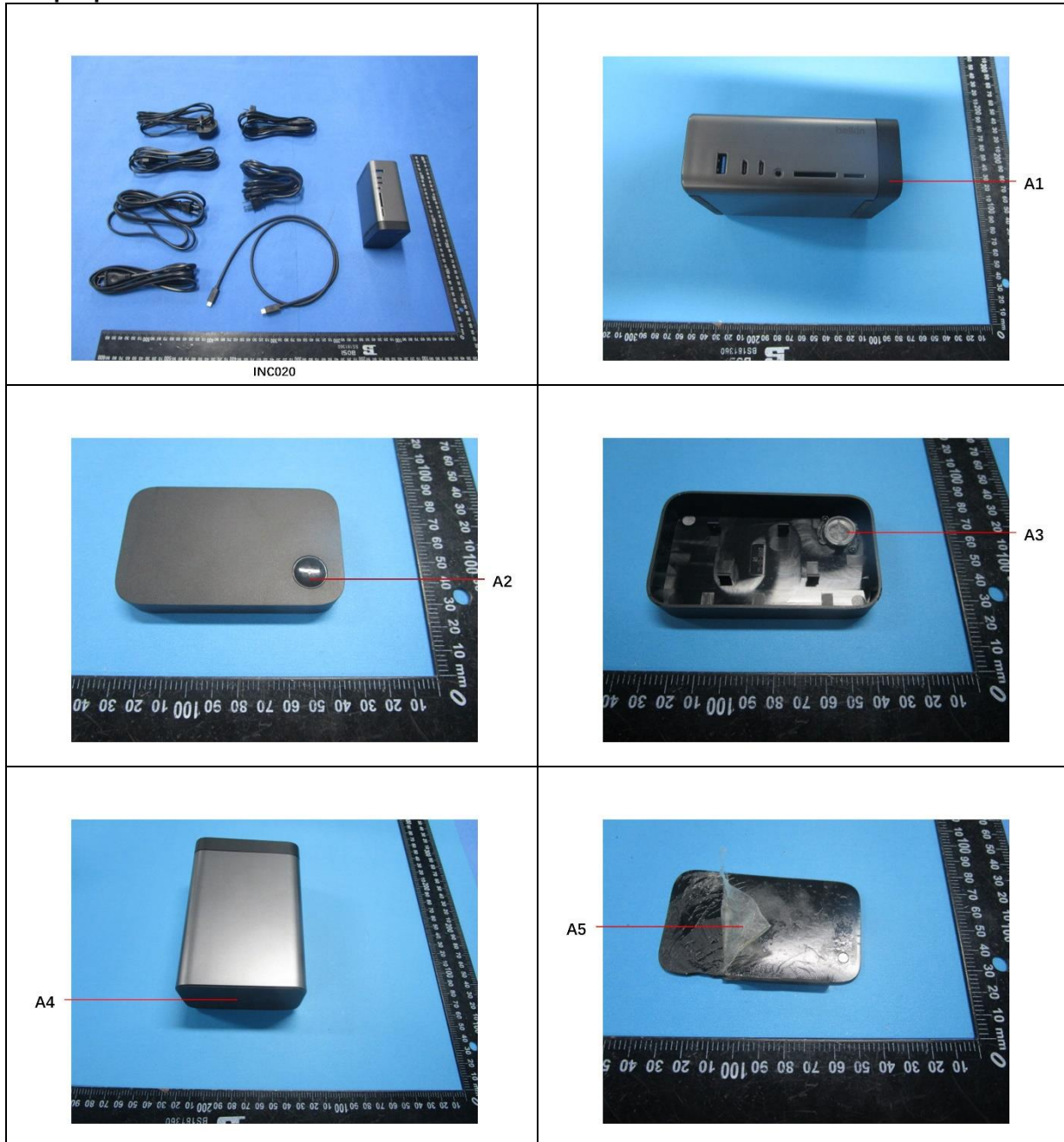
Unless otherwise agreed in writing, this document is issued by the Company subject to its General Conditions of Service printed overleaf, available on request or accessible at <https://www.sgs.com/en/Terms-and-Conditions>. Attention is drawn to the limitation of liability, indemnification and jurisdiction issues defined therein. Any holder of this document is advised that information contained hereon reflects the Company's findings at the time of its intervention only and within the limits of Client's instructions, if any. The Company's sole responsibility is to its Client and this document does not exonerate parties to a transaction from exercising all their rights and obligations under the transaction documents. This document cannot be reproduced except in full, without prior written approval of the Company. Any unauthorized alteration, forgery or falsification of the content or appearance of this document is unlawful and offenders may be prosecuted to the fullest extent of the law. Unless otherwise stated the results shown in this test report refer only to the sample(s) tested.

Attention: To check the authenticity of testing /inspection report & certificate, please contact us at telephone: (86-755) 8307 1443, or email: [CN.Doccheck@sgs.com](mailto:CN.Doccheck@sgs.com)

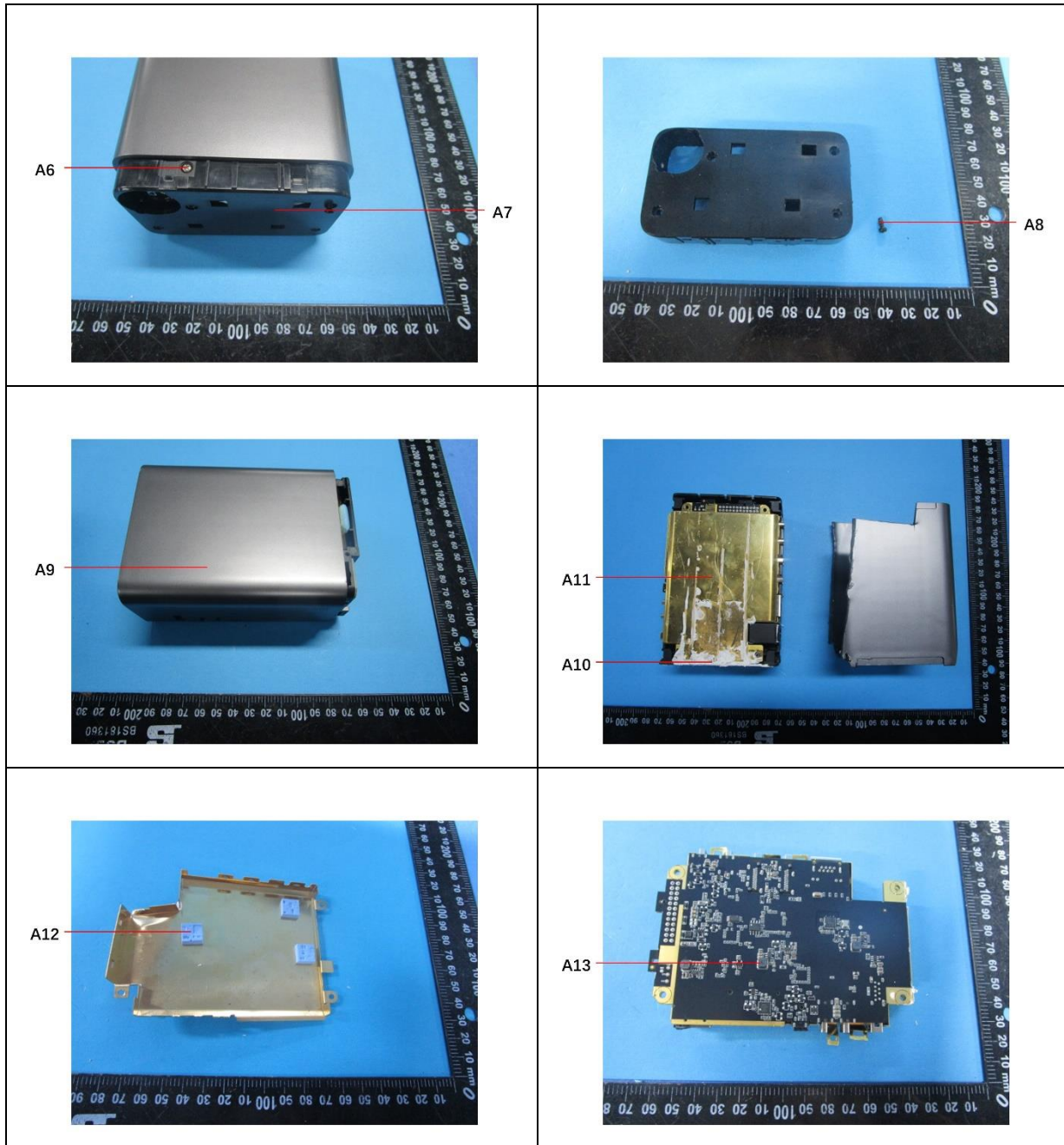
No.198, Kezhu Road, Science City, Economic & Technological Development Area, Guangzhou, Guangdong, China 510663  
中国·广东·广州高新技术产业开发区科学城科珠路198号 邮编: 510663

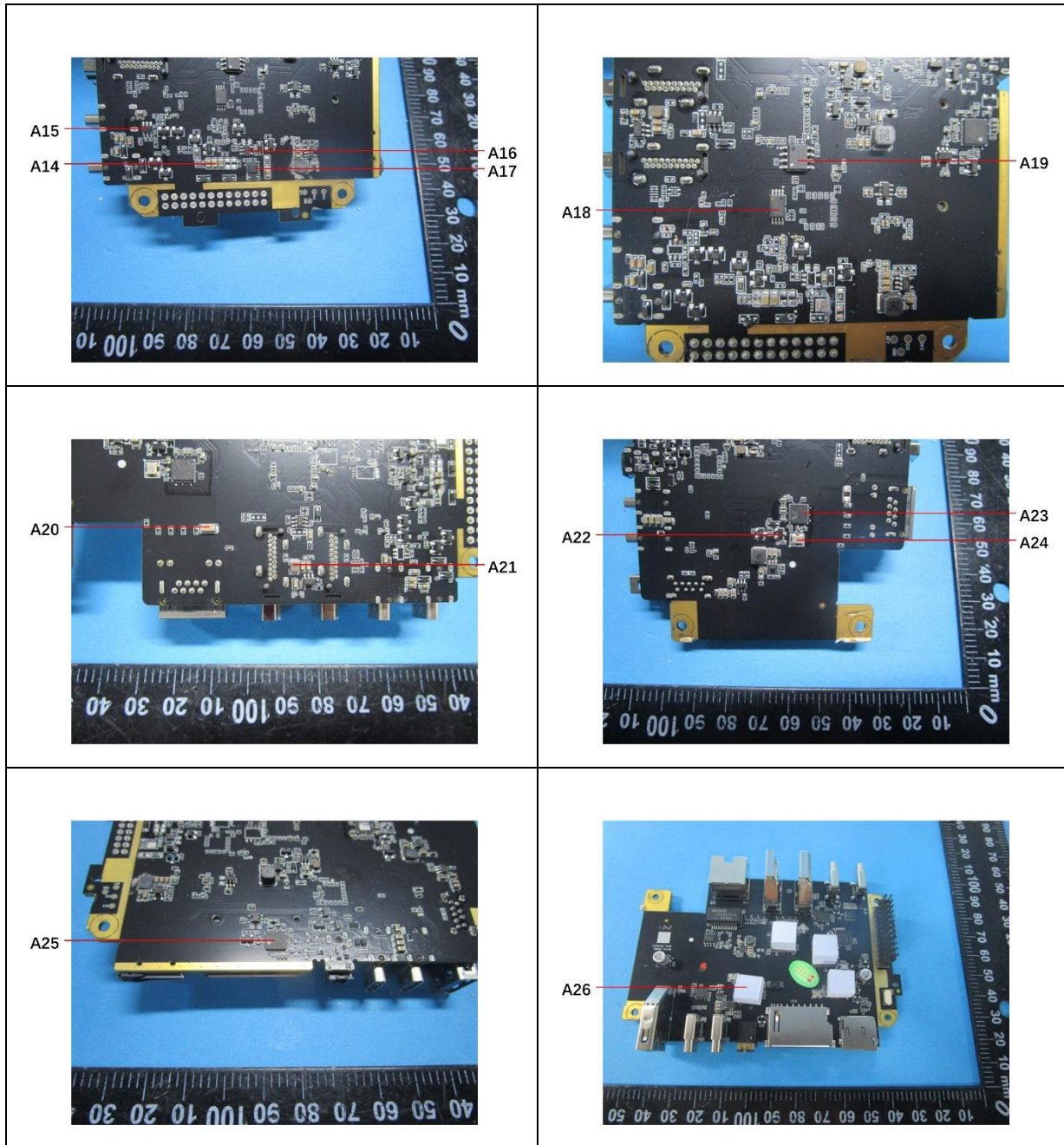
t (86-20) 82155555 [www.sgsgroup.com.cn](http://www.sgsgroup.com.cn)  
t (86-20) 82155555 [sgs.china@sgs.com](mailto:sgs.china@sgs.com)

**Sample photos:**









SGS-CSTC Standards Technical Services Co., Ltd.  
Guangzhou Branch

Unless otherwise agreed in writing, this document is issued by the Company subject to its General Conditions of Service printed overleaf, available on request or accessible at <https://www.sgs.com/en/Terms-and-Conditions>. Attention is drawn to the limitation of liability, indemnification and jurisdiction issues defined therein. Any holder of this document is advised that information contained hereon reflects the Company's findings at the time of its intervention only and within the limits of Client's instructions, if any. The Company's sole responsibility is to its Client and this document does not exonerate parties to a transaction from exercising all their rights and obligations under the transaction documents. This document cannot be reproduced except in full, without prior written approval of the Company. Any unauthorized alteration, forgery or falsification of the content or appearance of this document is unlawful and offenders may be prosecuted to the fullest extent of the law. Unless otherwise stated the results shown in this test report refer only to the sample(s) tested.

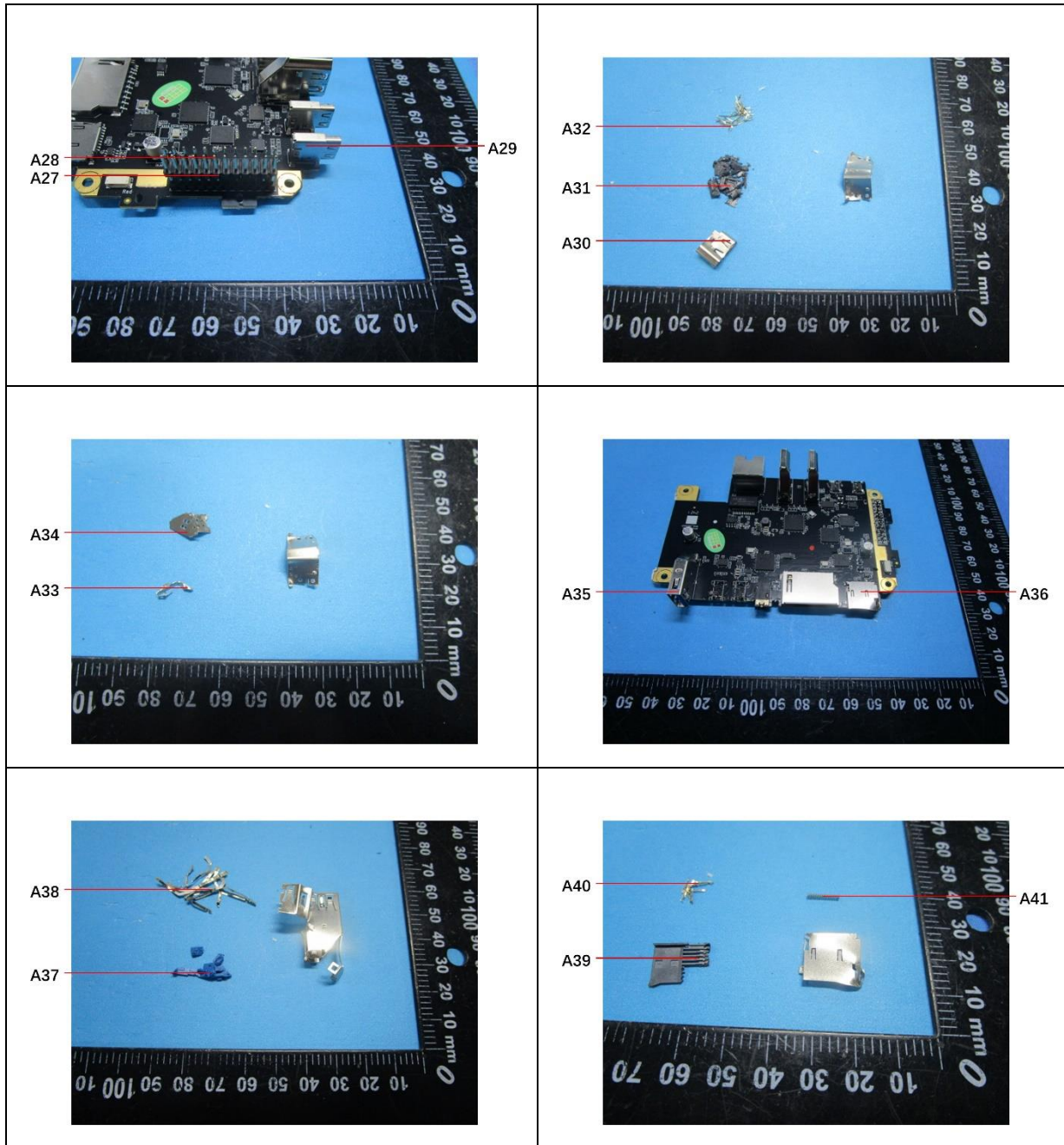
Attention: To check the authenticity of testing / inspection report & certificate, please contact us at telephone: (86-755) 8307 1443, or email: [CN.Doccheck@sgs.com](mailto:CN.Doccheck@sgs.com)

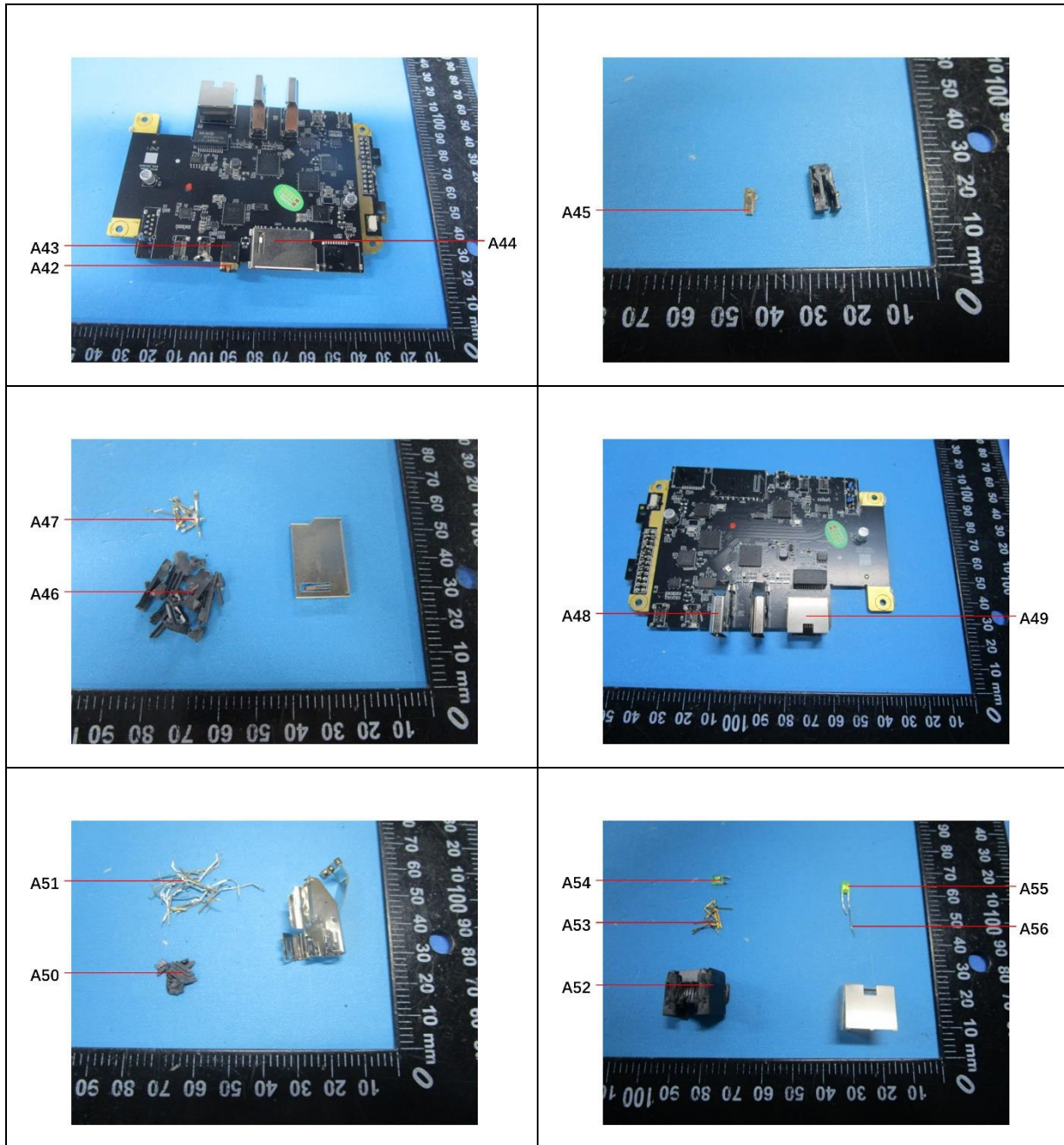
No.198, Kezhu Road, Science City, Economic & Technological Development Area, Guangzhou, Guangdong, China 510663  
中国·广东·广州高新技术产业开发区科学城科珠路198号 邮编: 510663

t (86-20) 82155555 [www.sgsgroup.com.cn](http://www.sgsgroup.com.cn)  
t (86-20) 82155555 [sgs.china@sgs.com](mailto:sgs.china@sgs.com)

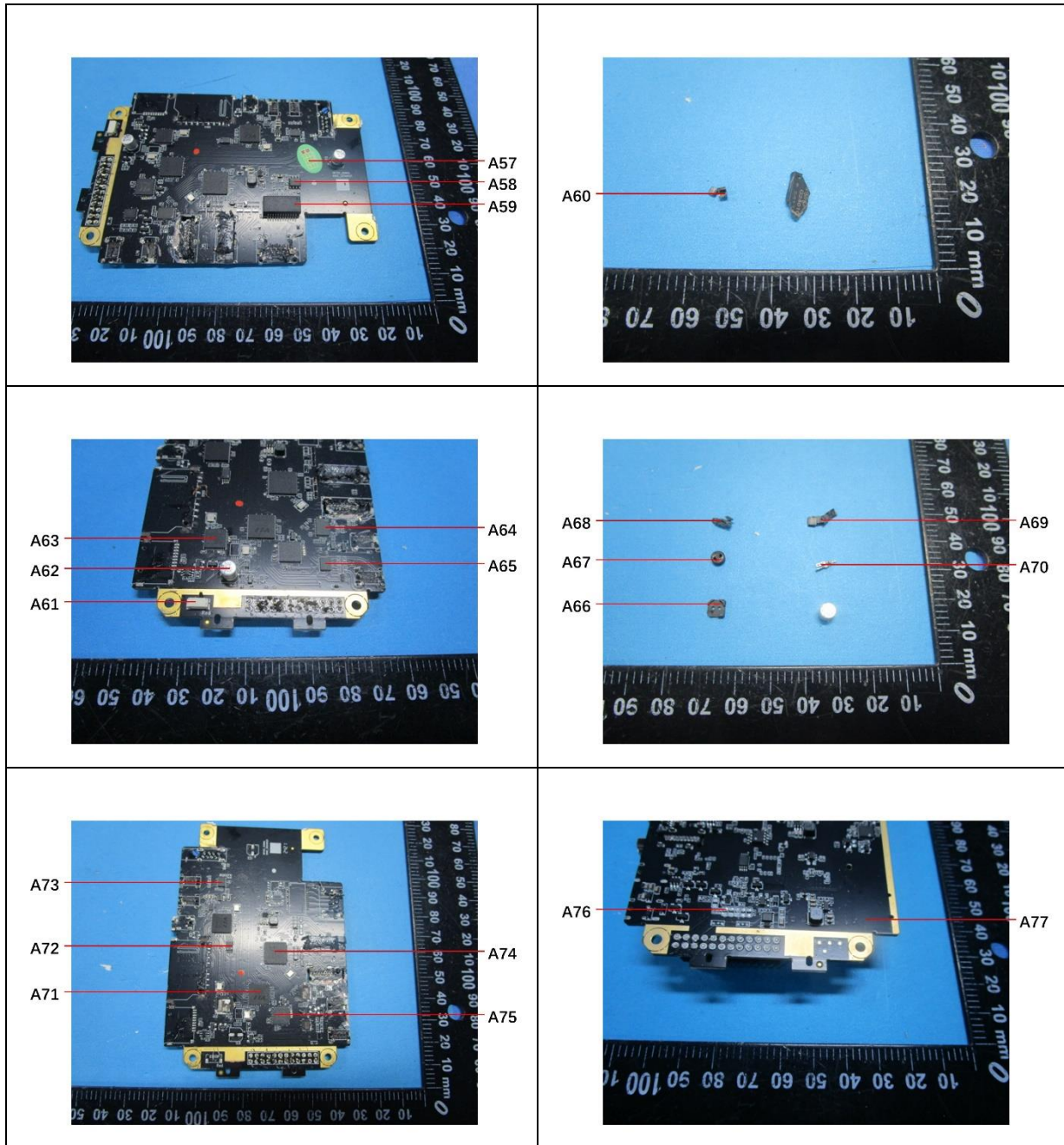
Member of the SGS Group (SGS SA)

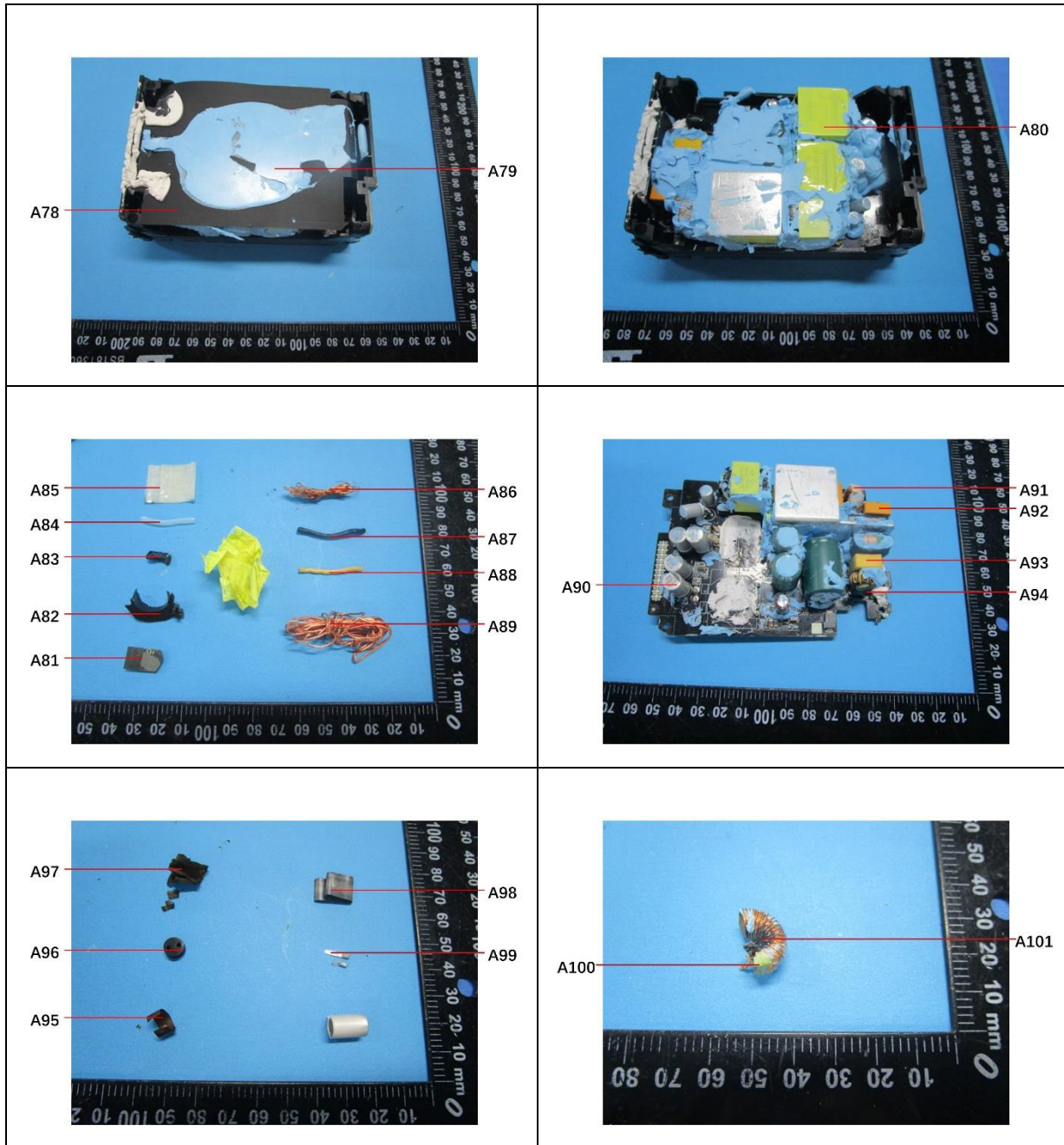




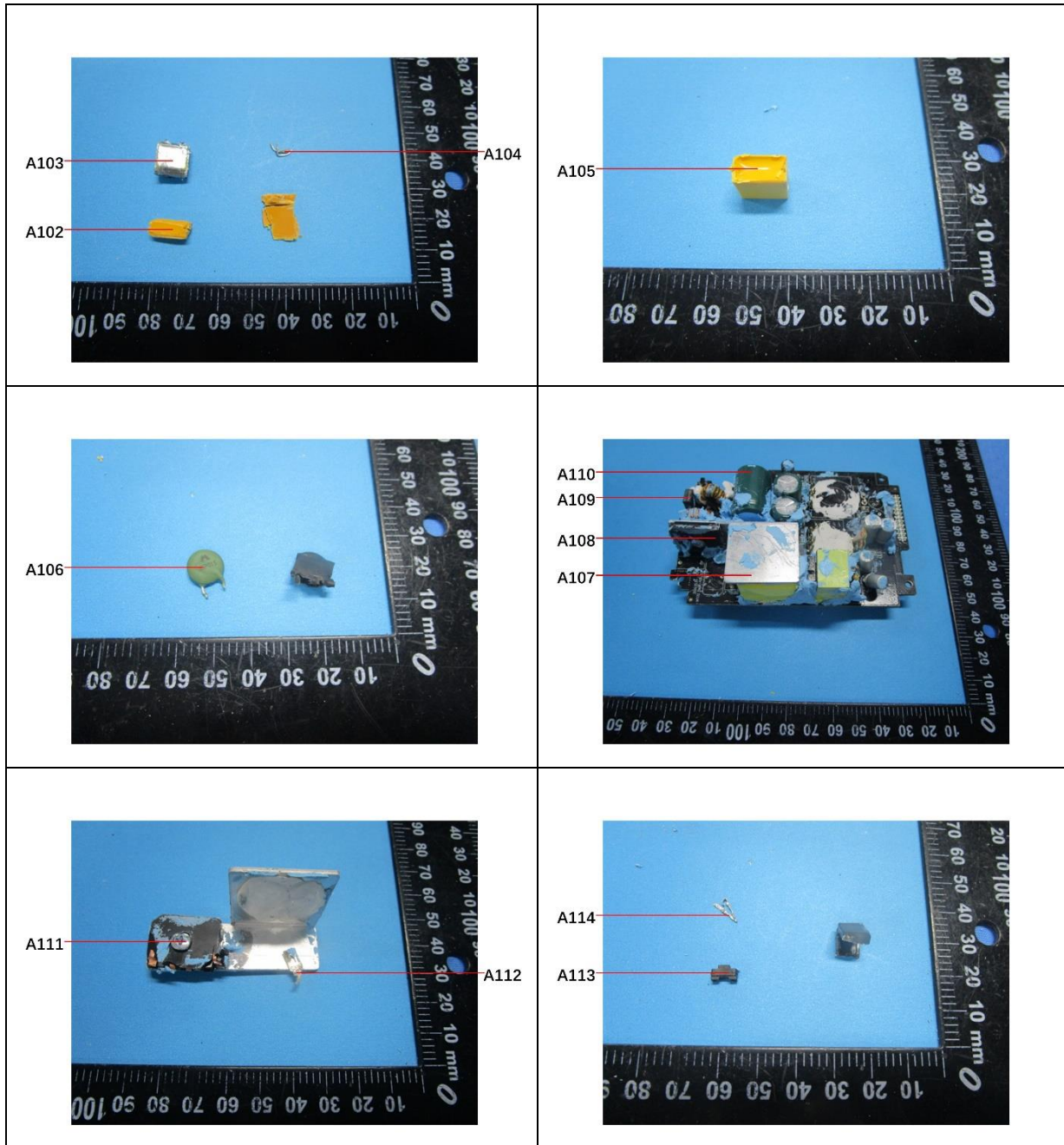


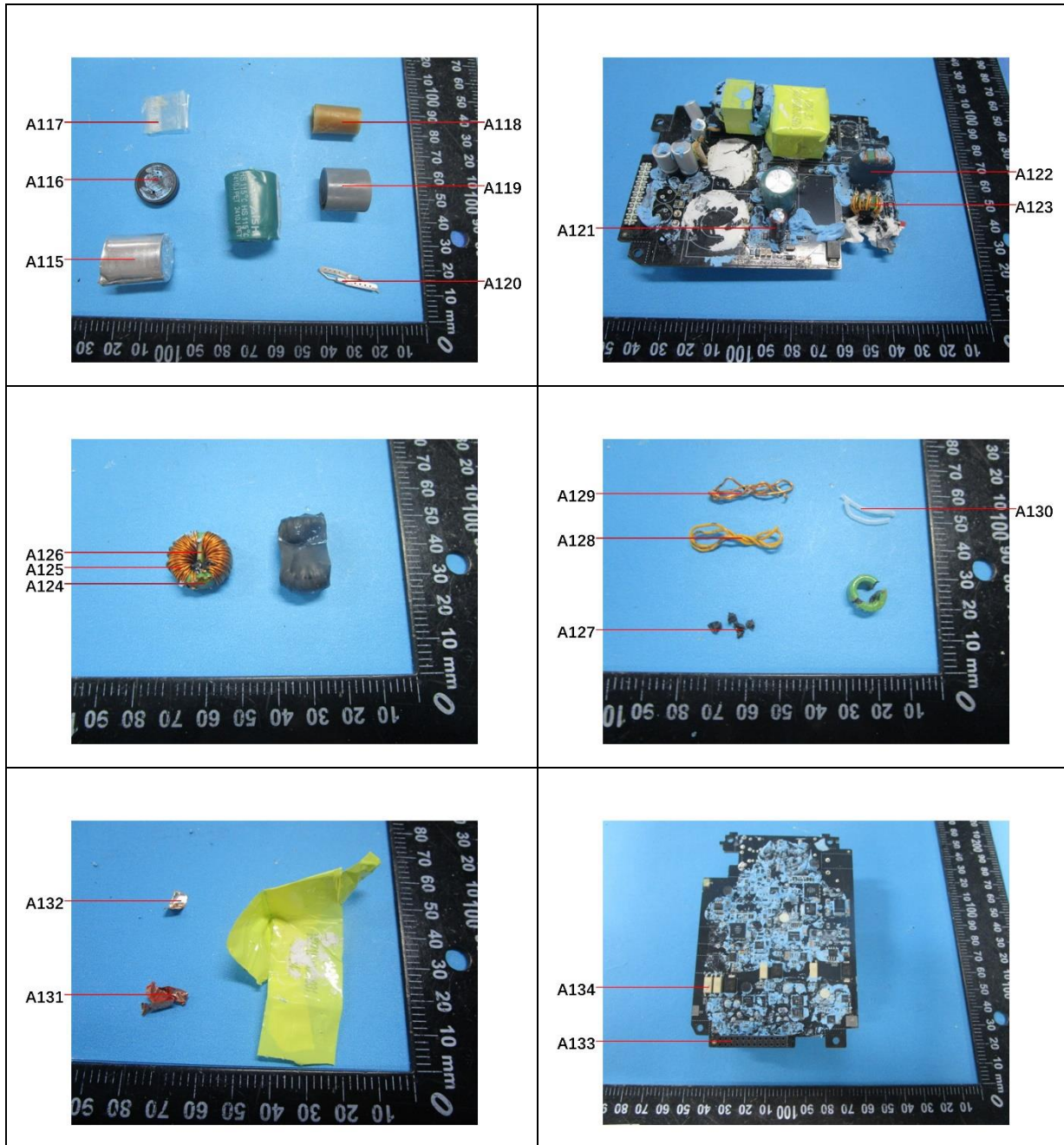




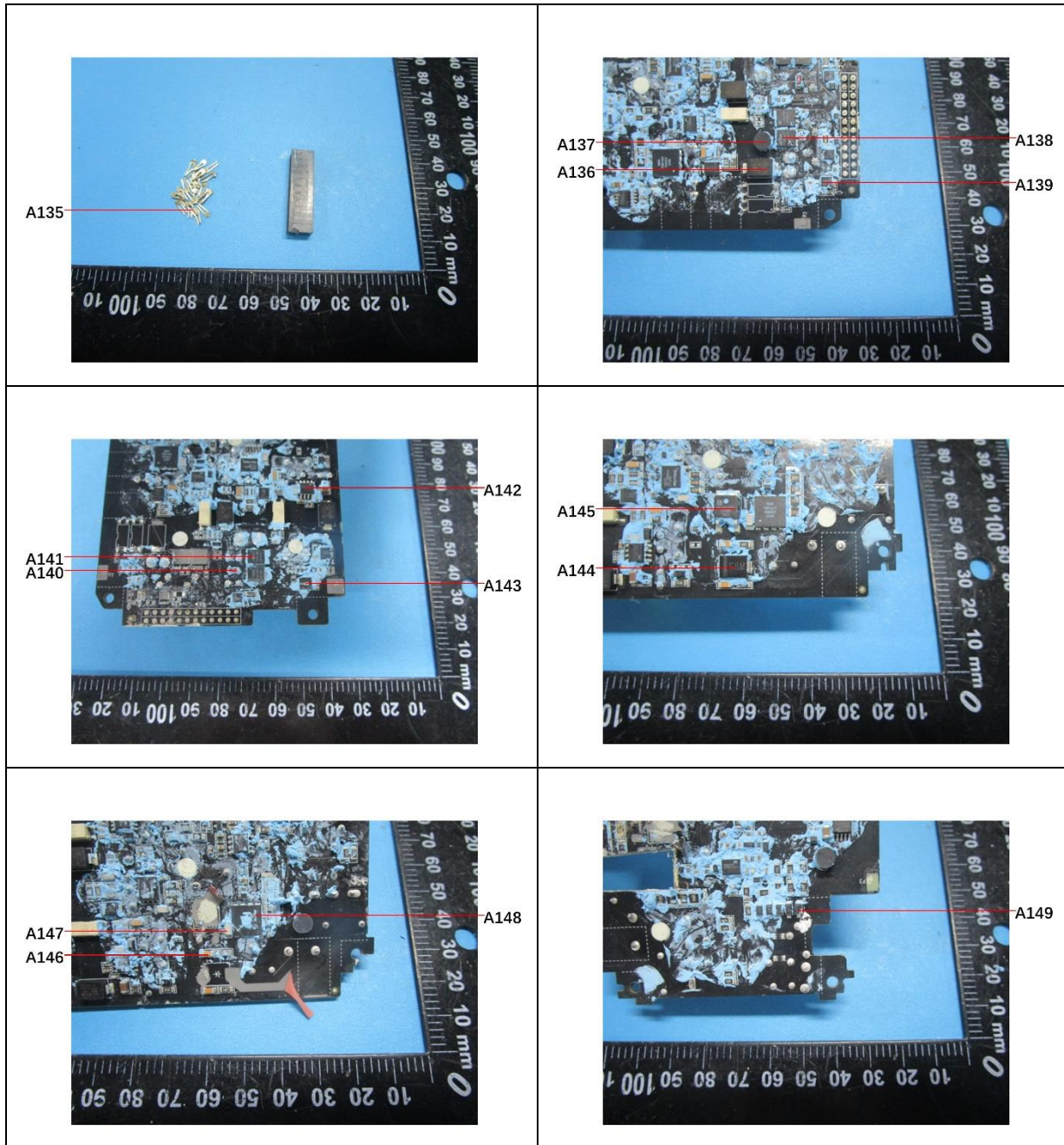


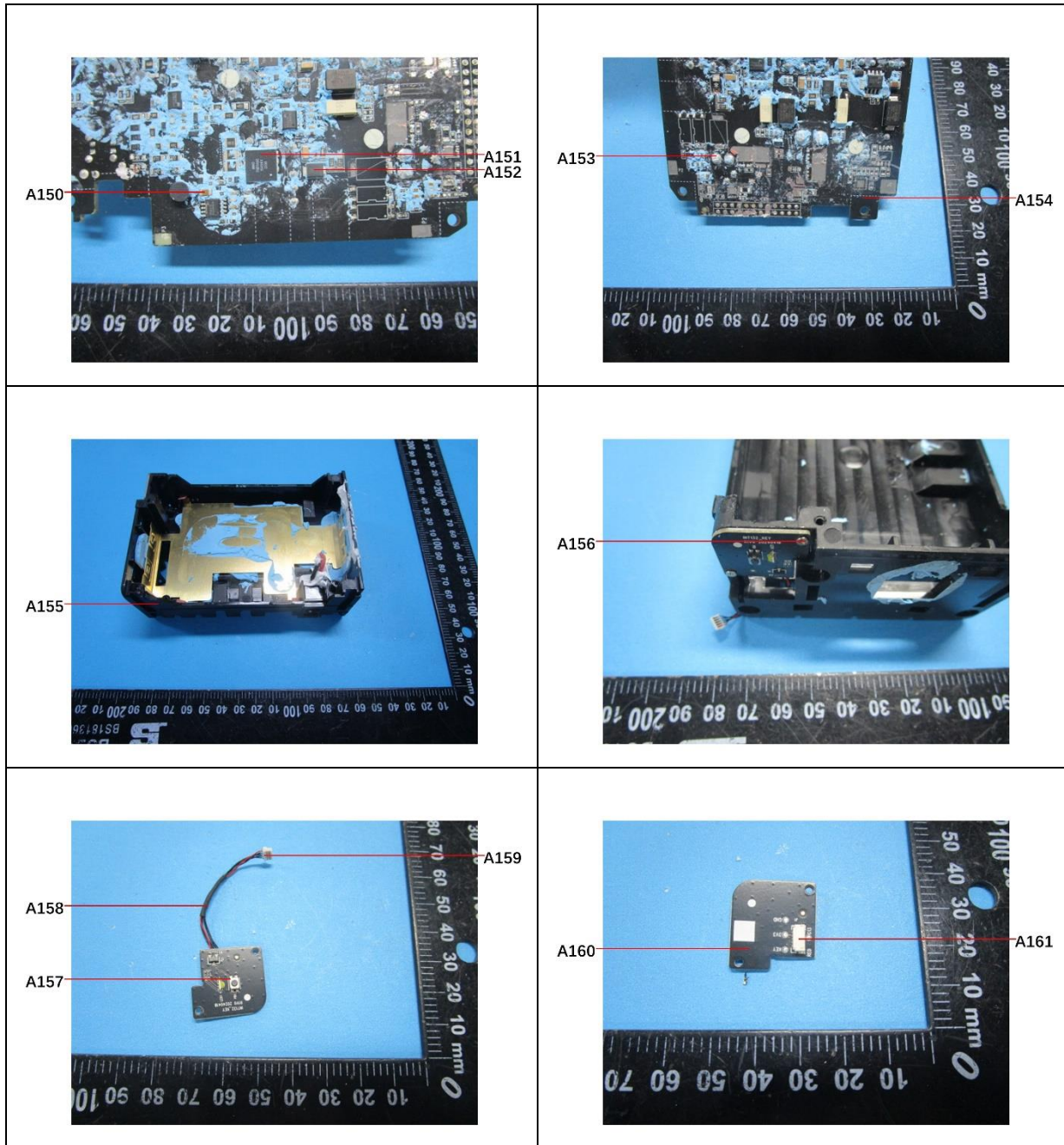




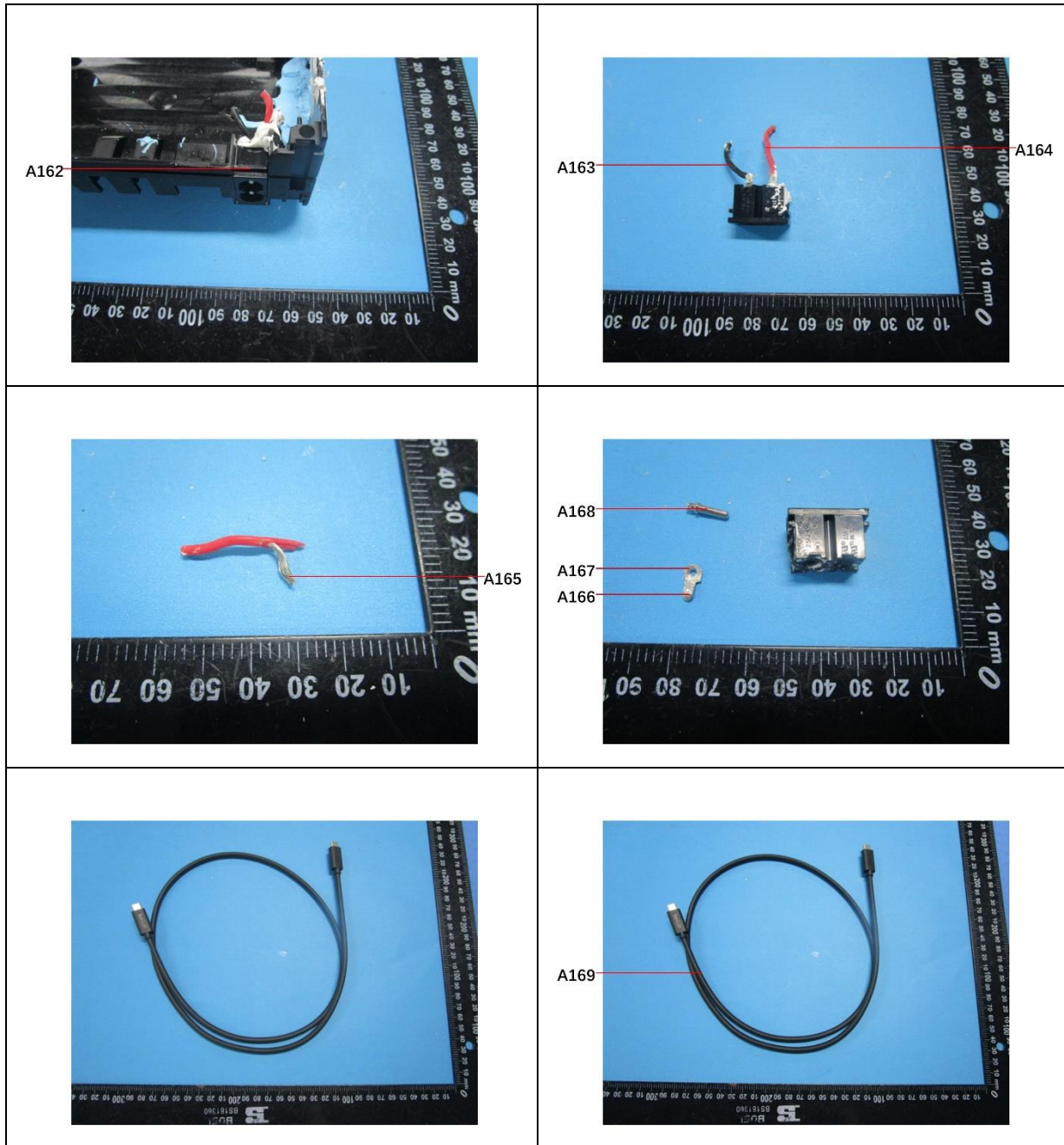


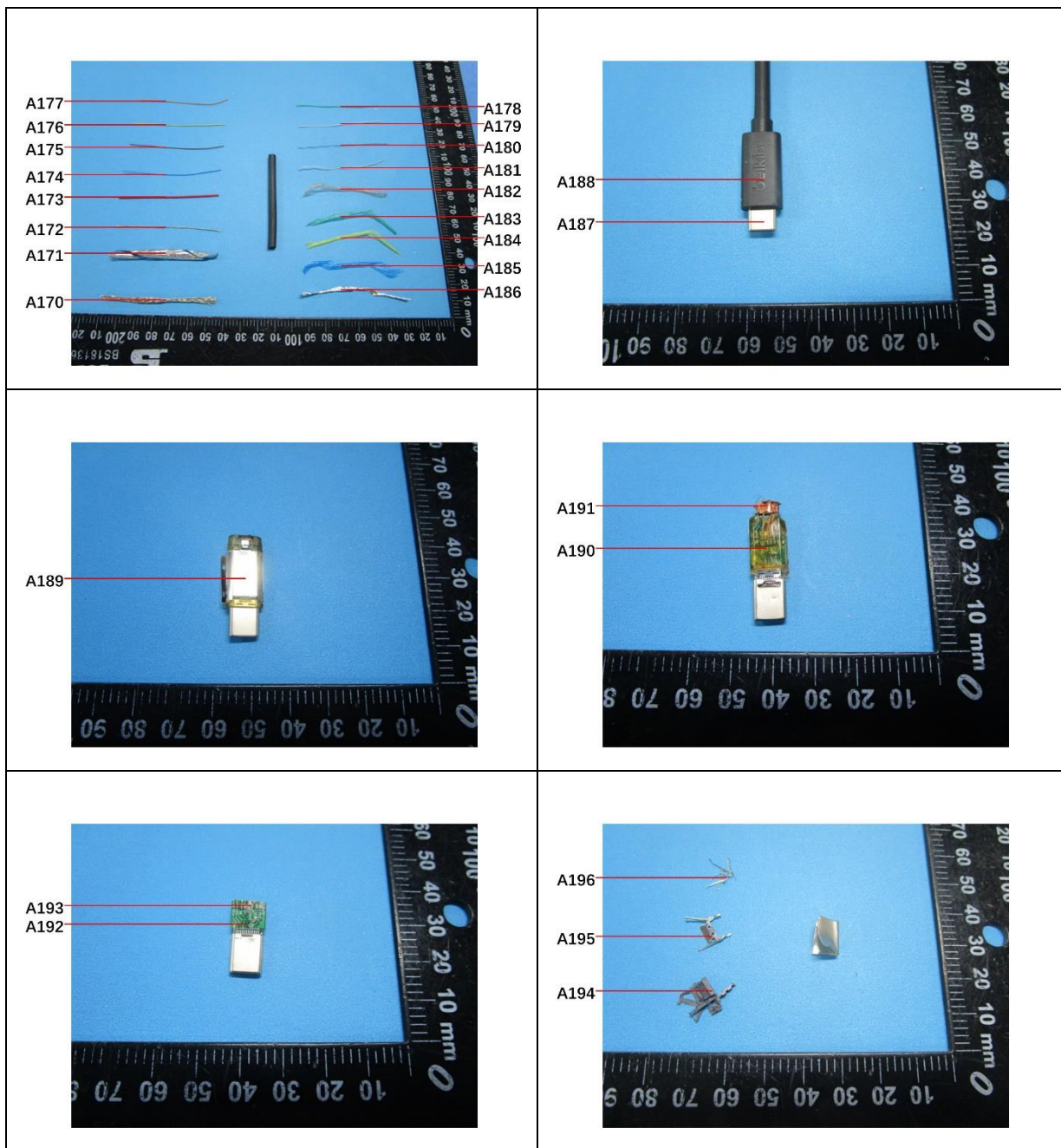




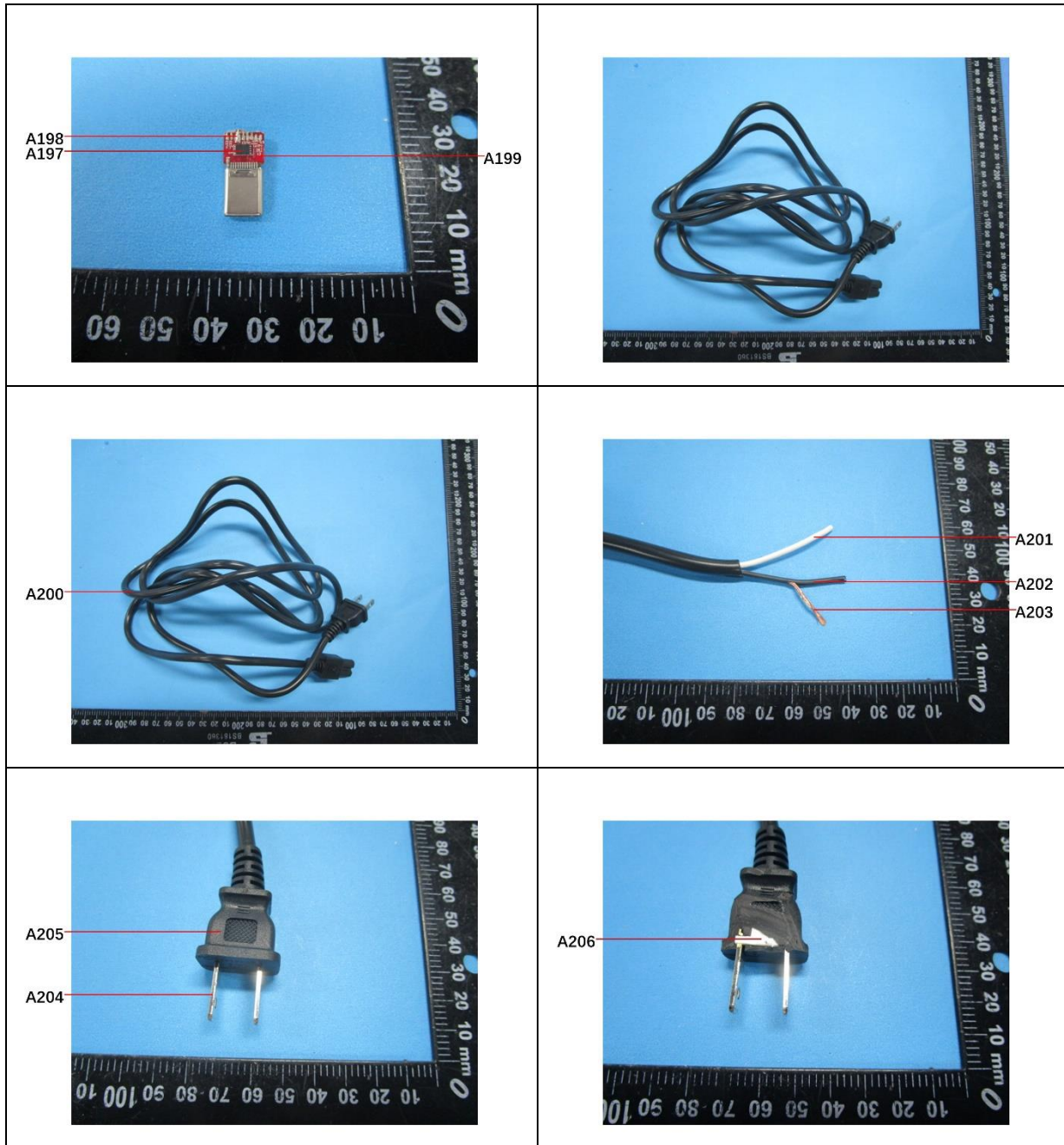


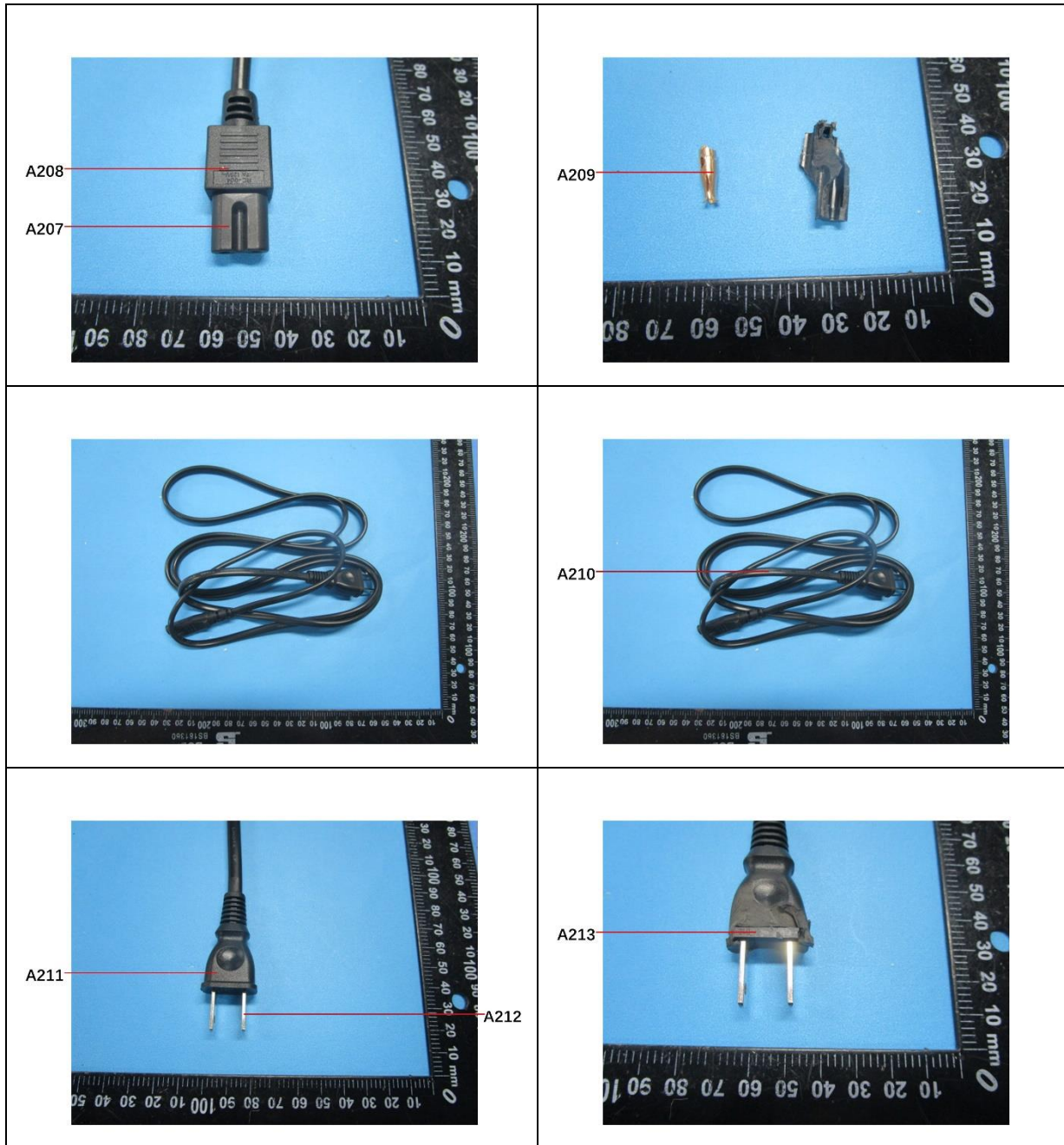




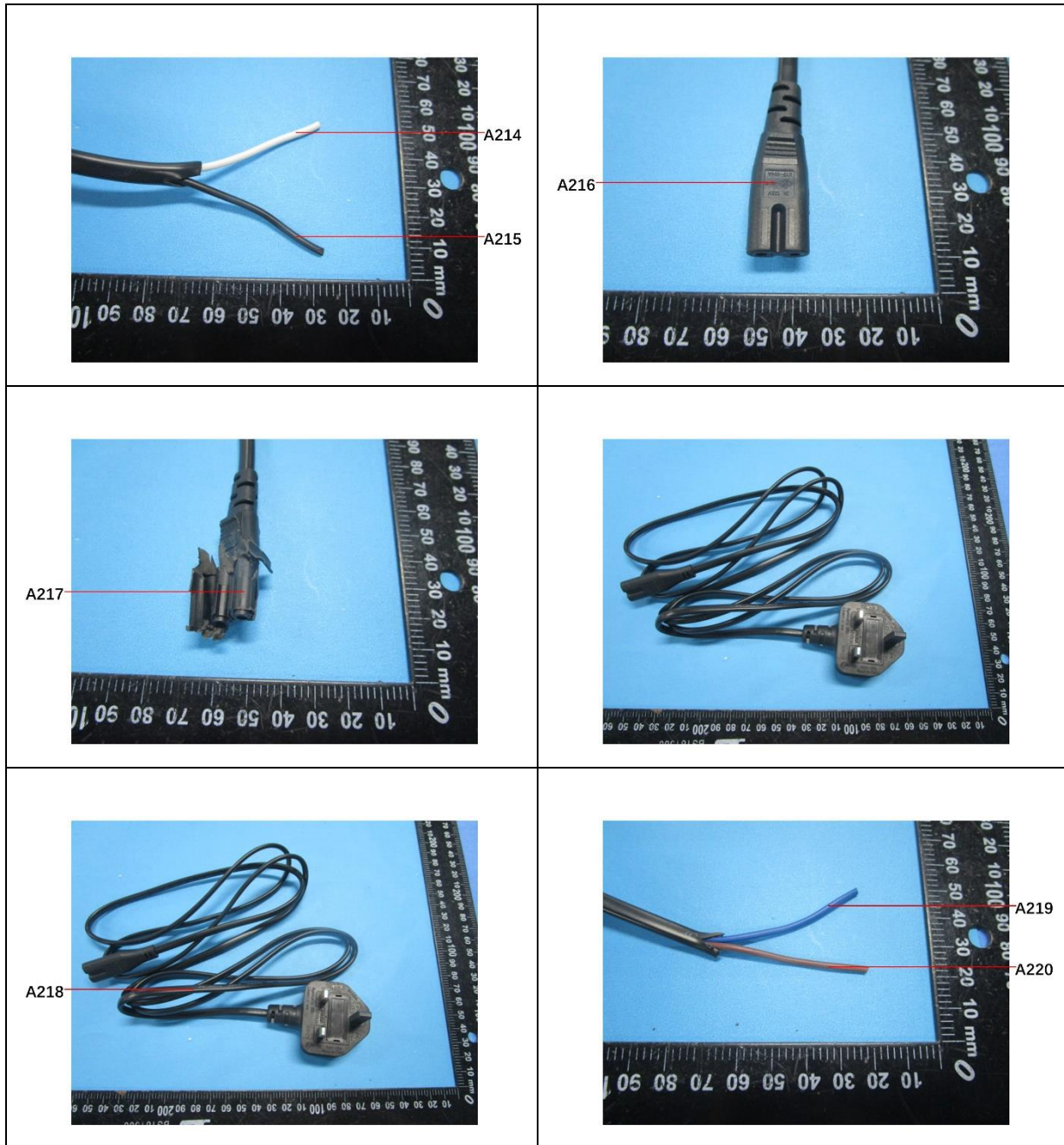


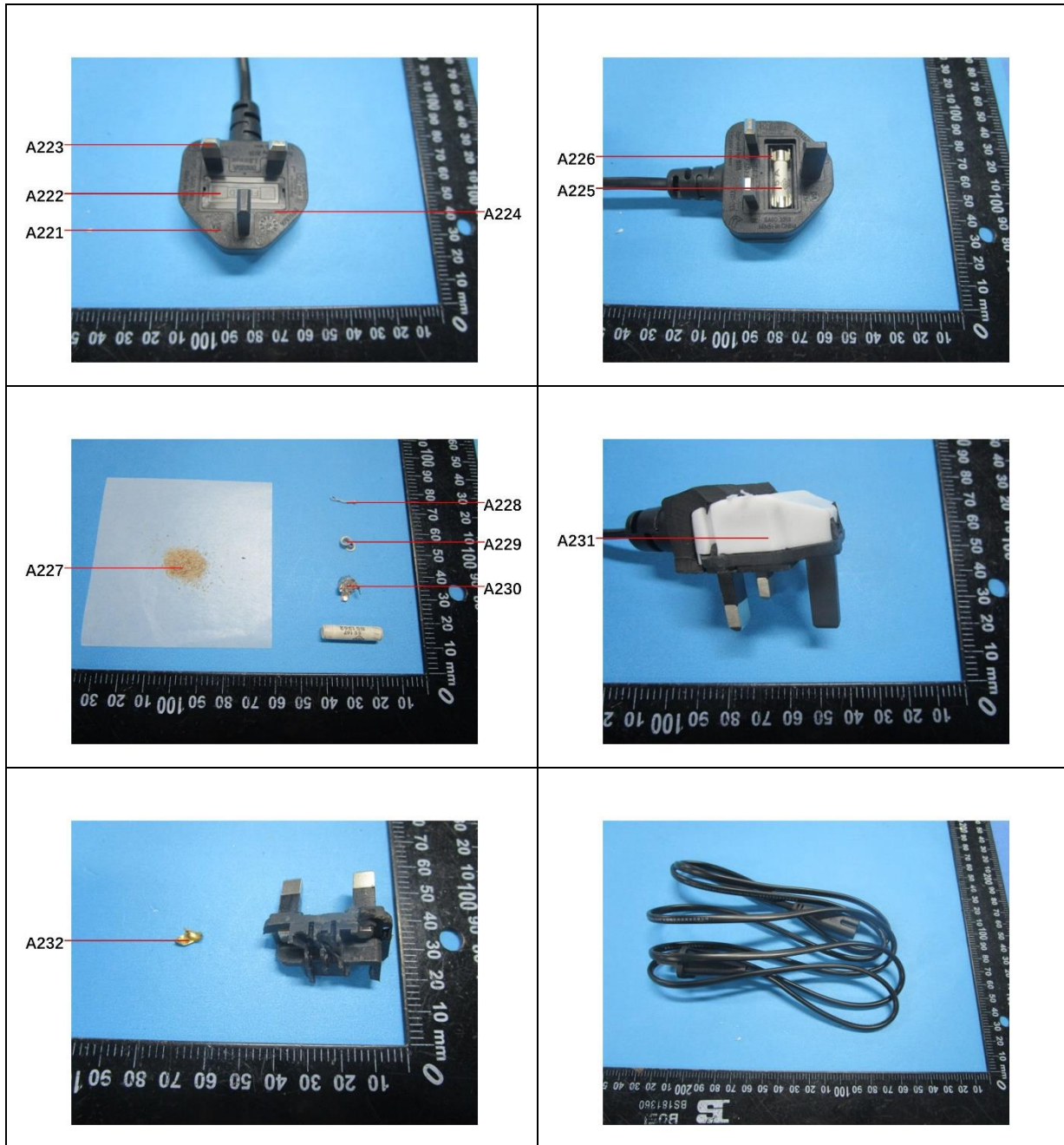












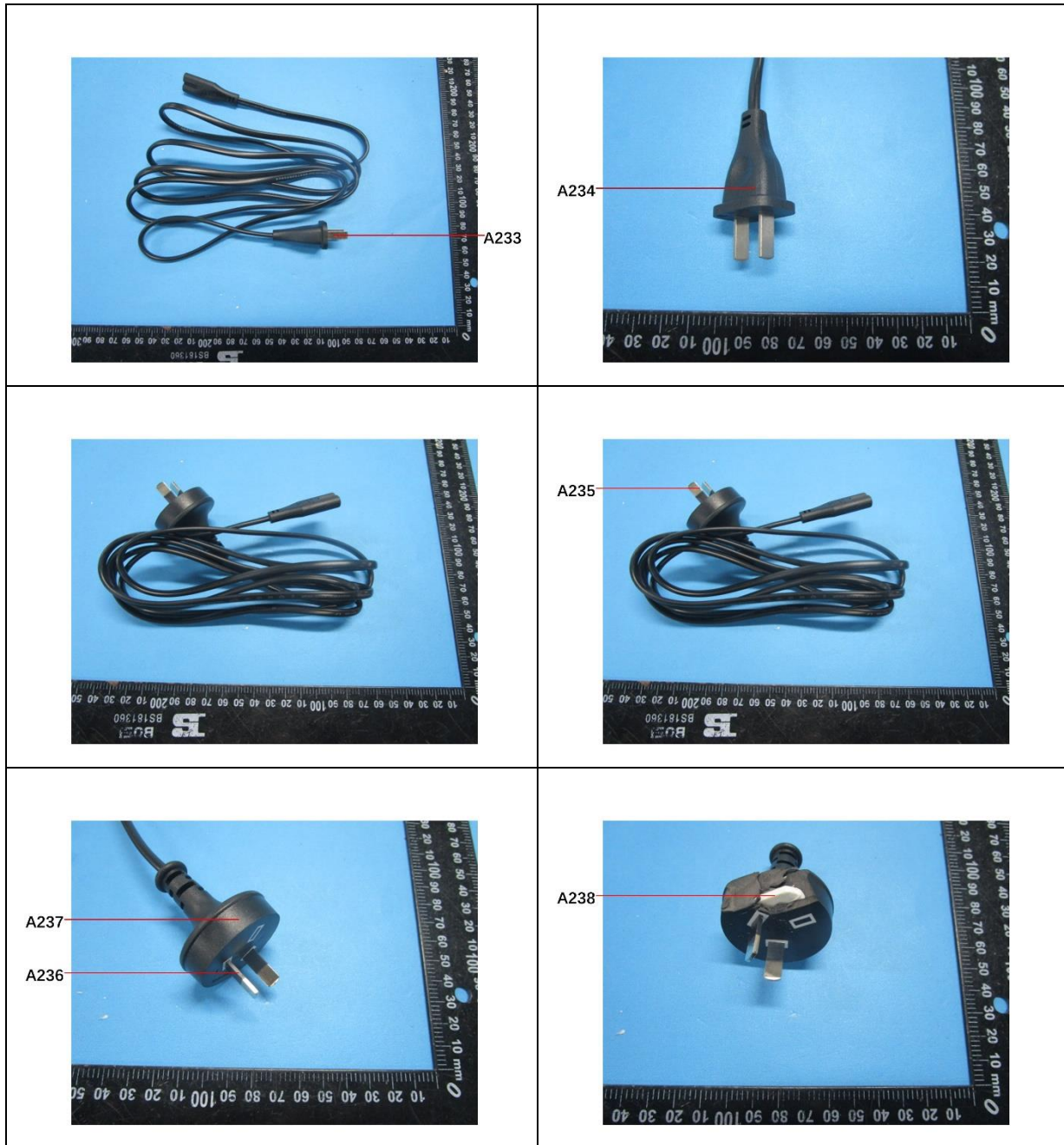
SGS-CSI Standards Technical Services Co., Ltd.  
Guangzhou Branch Technical Laboratory

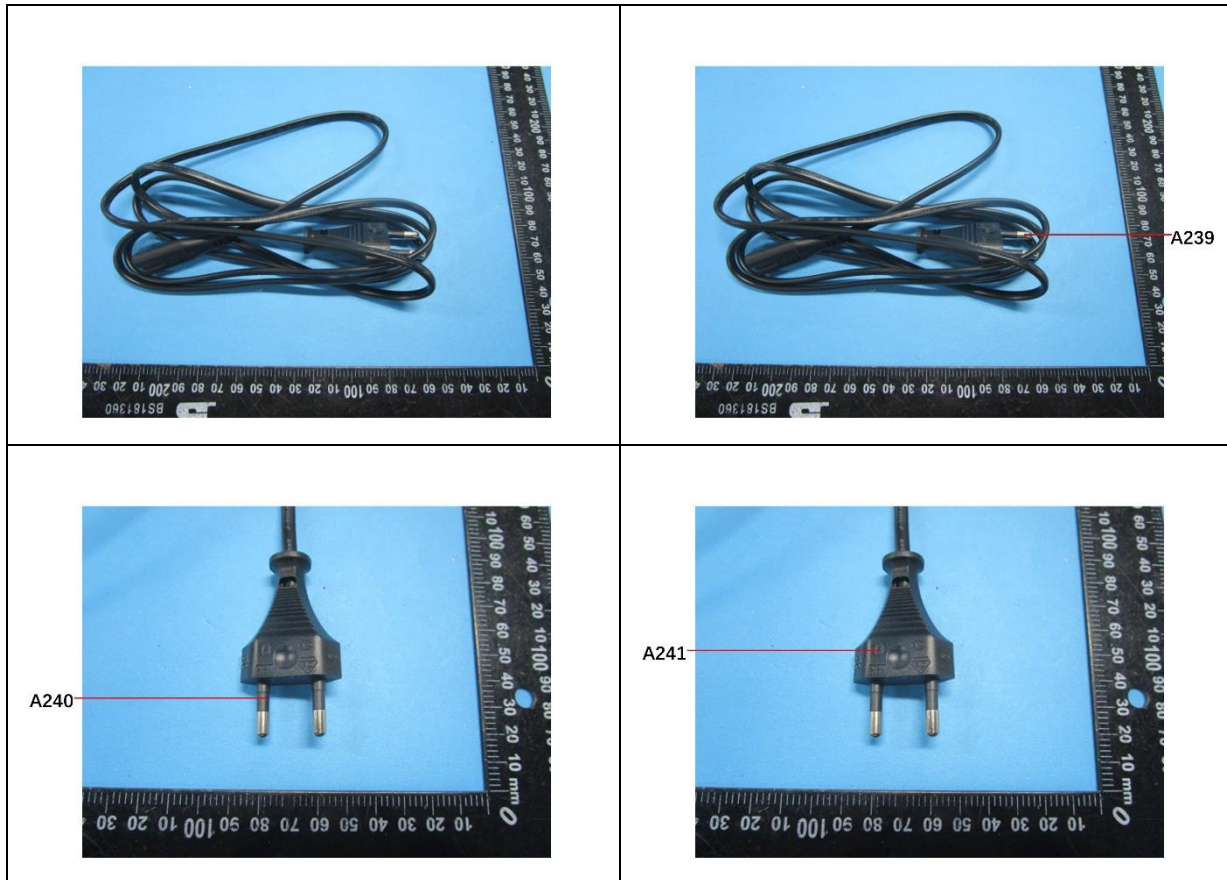
Unless otherwise agreed in writing, this document is issued by the Company subject to its General Conditions of Service printed overleaf, available on request or accessible at <https://www.sgs.com/en/Terms-and-Conditions>. Attention is drawn to the limitation of liability, indemnification and jurisdiction issues defined therein. Any holder of this document is advised that information contained hereon reflects the Company's findings at the time of its intervention only and within the limits of Client's instructions, if any. The Company's sole responsibility is to its Client and this document does not exonerate parties to a transaction from exercising all their rights and obligations under the transaction documents. This document cannot be reproduced except in full, without prior written approval of the Company. Any unauthorized alteration, forgery or falsification of the content or appearance of this document is unlawful and offenders may be prosecuted to the fullest extent of the law. Unless otherwise stated the results shown in this test report refer only to the sample(s) tested.  
Attention: To check the authenticity of testing / inspection report & certificate, please contact us at telephone: (86-755) 8307 1443, or email: [CN.Doccheck@sgs.com](mailto:CN.Doccheck@sgs.com)

No.198, Kezhu Road, Science City, Economic & Technological Development Area, Guangzhou, Guangdong, China 510663  
中国·广东·广州高新技术产业开发区科学城科珠路198号 邮编: 510663

t (86-20) 82155555 [www.sgsgroup.com.cn](http://www.sgsgroup.com.cn)  
t (86-20) 82155555 [sgs.china@sgs.com](mailto:sgs.china@sgs.com)







SGS authenticate the photo on original report only  
 \*\*\* End of Report \*\*\*



Unless otherwise agreed in writing, this document is issued by the Company subject to its General Conditions of Service printed overleaf, available on request or accessible at <https://www.sgs.com/en/Terms-and-Conditions>. Attention is drawn to the limitation of liability, indemnification and jurisdiction issues defined therein. Any holder of this document is advised that information contained hereon reflects the Company's findings at the time of its intervention only and within the limits of Client's instructions, if any. The Company's sole responsibility is to its Client and this document does not exonerate parties to a transaction from exercising all their rights and obligations under the transaction documents. This document cannot be reproduced except in full, without prior written approval of the Company. Any unauthorized alteration, forgery or falsification of the content or appearance of this document is unlawful and offenders may be prosecuted to the fullest extent of the law. Unless otherwise stated the results shown in this test report refer only to the sample(s) tested.  
 Attention: To check the authenticity of testing / inspection report & certificate, please contact us at telephone: (86-755) 8307 1443, or email: [CN.Doccheck@sgs.com](mailto:CN.Doccheck@sgs.com)

SGS Standards Technical Services Co., Ltd.  
 Guangzhou Branch

No.198, Kezhu Road, Science City, Economic & Technological Development Area, Guangzhou, Guangdong, China 510663  
 中国·广东·广州高新技术产业开发区科学城科珠路198号 邮编: 510663

t (86-20) 82155555 www.sgsgroup.com.cn  
 t (86-20) 82155555 sgs.china@sgs.com