

Report No.: **178200608d 001** Page 1 of 44

Client: **NINEBOT (CHANGZHOU) TECH CO., LTD.**

Contact Information: 16F-17F, Block A, Building 3, No.18, Changwu Mid Rd, Wujin Dist.,  
Changzhou, Jiangsu, P. R. China

Identification/  
Model No(s): Segway eKickScooter ZT3 Pro  
Tested models No.:051801CN, 051801E, 051801U  
Additional models No.:051801D, 051801A

Sample obtaining method: Sending by customer

Condition at delivery: Test item complete and undamaged.

Sample Receiving date: 2024-06-14,2024-06-25,2024-07-01,2024-07-08,2024-07-09,2024-07-12,2024-07-17,2024-07-18,2024-07-19,2024-07-20,2024-07-26

Testing Period: 2024-06-14 to 2024-07-31

Place of testing: Chemical laboratory Qingdao

Test Specification:	Test result:
1. Short Chain Chlorinated Paraffin (SCCP) - according to Regulation (EU) 2019/1021	PASS
2. Hexabromocyclododecane (HBCDD) content - according to Regulation (EU) 2019/1021	PASS

**Other information:**

Remark: This report does not include the test of battery, adapter and power cord.

For and on behalf of  
TÜV Rheinland/CCIC (Qingdao) Co., Ltd.



2024-08-05

Nina Yang / Senior Project Engineer

Date

Name/Position

Sample information is provided by customer. Test result is drawn according to the kind and extent of tests performed.  
This test report relates to the above mentioned test sample. Without permission of the test center this test report is not permitted to be duplicated in extracts. This test report does not entitle to carry any safety mark on this or similar products.  
"Decision Rule" document announced in our website (<https://www.tuv.com/landingpage/en/qm-gcn/>) describes the statement of conformity and its rule of enforcement for test results are applicable throughout this test report.

**Test Report No.: 178200608d 001**

Page 2 of 44

**Material List:**

Item: Segway eKickScooter ZT3 Pro  
 Tested models No.:051801CN, 051801E, 051801U  
 Additional models No.:051801D, 051801A

Material No.	Material	Color	Location
M001	Coating	black	Refer to photo
M003	Plastic	black	Refer to photo
M004	Plastic	beige	Refer to photo
M008	Plastic	black	Refer to photo
M009	Plastic	black	Refer to photo
M010	Plastic	black	Refer to photo
M011	Plastic + adhesive	black/white	Refer to photo
M012	Plastic + adhesive	transparent	Refer to photo
M013	Plastic	white	Refer to photo
M014	PCB board	black	Refer to photo
M019	Plastic	beige	Refer to photo
M020	Plastic	blue	Refer to photo
M021	Plastic	white	Refer to photo
M023	Plastic	red	Refer to photo
M025	PCB board	blue	Refer to photo
M027	Plastic	red	Refer to photo
M034	Plastic	grey	Refer to photo
M041	PCB board	green	Refer to photo
M043	Plastic	black	Refer to photo
M044	Plastic	transparent	Refer to photo
M045	Plastic	black	Refer to photo
M046	Plastic	white	Refer to photo
M047	Plastic	transparent	Refer to photo
M054	Plastic	pink	Refer to photo
M055	Plastic	black	Refer to photo
M056	Plastic	black	Refer to photo
M086	Plastic	black	Refer to photo

**Test Report No.: 178200608d 001**

Page 3 of 44

M087	Plastic	black	Refer to photo
M092	Plastic	red	Refer to photo
M094	Plastic	black	Refer to photo
M095	Plastic	red	Refer to photo
M096	Plastic	green	Refer to photo
M097	Plastic	black	Refer to photo
M099	Plastic	black	Refer to photo
M100	Plastic	white	Refer to photo
M101	Plastic	red	Refer to photo
M102	Plastic	black	Refer to photo
M103	Plastic	yellow	Refer to photo
M104	Plastic	green	Refer to photo
M105	Plastic	red	Refer to photo
M106	Plastic	black	Refer to photo
M107	Plastic	blue	Refer to photo
M109	Plastic	white	Refer to photo
M110	Plastic	orange	Refer to photo
M111	Plastic	white	Refer to photo
M114	Plastic	white	Refer to photo
M115	Plastic	light blue	Refer to photo
M116	Plastic	white	Refer to photo
M117	Plastic	yellow	Refer to photo
M118	Plastic	blue	Refer to photo
M119	Plastic	black	Refer to photo
M121	Plastic	black	Refer to photo
M124	Plastic	red	Refer to photo
M125	Plastic	dark green	Refer to photo
M126	Plastic	light green	Refer to photo
M127	Plastic	black	Refer to photo
M128	Plastic	red	Refer to photo
M130	Plastic	black	Refer to photo
M131	Plastic	orange	Refer to photo

**Test Report No.: 178200608d 001**

Page 4 of 44

M132	Plastic	grey	Refer to photo
M133	Plastic	yellow	Refer to photo
M134	Plastic	white	Refer to photo
M136	Plastic	black	Refer to photo
M137	Plastic	blue	Refer to photo
M138	Plastic	red	Refer to photo
M139	Plastic	black	Refer to photo
M140	Plastic	yellow	Refer to photo
M141	Plastic	green	Refer to photo
M143	Plastic	red	Refer to photo
M144	Plastic	black	Refer to photo
M145	Plastic	orange	Refer to photo
M147	Plastic	black	Refer to photo
M148	Plastic	black	Refer to photo
M149	Plastic	black	Refer to photo
M152	Plastic	black	Refer to photo
M153	Plastic	white	Refer to photo
M154	Plastic	black	Refer to photo
M155	Plastic	black	Refer to photo
M156	Plastic	white	Refer to photo
M166	Plastic + printing + adhesive	white/transparent	Refer to photo
M167	Coating	silvery	Refer to photo
M168	Metal	black	Refer to photo
M169	Plastic + paper + adhesive	white/black	Refer to photo
M172	Plastic	black	Refer to photo
M173	Plastic	black	Refer to photo
M184	Plastic	black	Refer to photo
M187	Plastic	white	Refer to photo
M188	Plastic	black	Refer to photo
M199	Plastic	black	Refer to photo
M202	Plastic	black	Refer to photo

**Test Report No.: 178200608d 001**

Page 5 of 44

M203	Plastic	black	Refer to photo
M217	Coating	red	Refer to photo
M221	Plastic	black	Refer to photo
M223-1	Plastic + adhesive	white	Refer to photo
M236	Plastic	black	Refer to photo
M244	Coating	black	Refer to photo
M248	Plastic	black	Refer to photo
M251	Plastic + printing + adhesive	black/silvery	Refer to photo
M252	Plastic	black	Refer to photo
M256	Paper + printing + adhesive	white/black	Refer to photo
M257	Plastic	white	Refer to photo
M260	Plastic	yellow	Refer to photo
M264	Plastic + adhesive	brown	Refer to photo
M265	Plastic	black	Refer to photo
M272	Plastic	brown	Refer to photo
M274	Glue	white	Refer to photo
M282	Paper	brown	Refer to photo
M283	Plastic	black	Refer to photo
M284	Plastic	orange/black	Refer to photo
M287	PCB board	green	Refer to photo
M292	Plastic	black	Refer to photo
M293	Plastic	black	Refer to photo
M294	Plastic	black	Refer to photo
M295	Foam + adhesive	black	Refer to photo
M298	Plastic	black	Refer to photo
M299	Plastic	red	Refer to photo
M300	Plastic	black	Refer to photo
M305	Plastic	black	Refer to photo
M307	Plastic	black	Refer to photo
M312	Glue	white	Refer to photo
M314	Plastic	black	Refer to photo

**Test Report No.: 178200608d 001**

Page 6 of 44

M316	Plastic	green	Refer to photo
M317	Plastic	yellow	Refer to photo
M319	PCB board	green	Refer to photo
M320	Plastic	white	Refer to photo
M322	Paper + adhesive	green	Refer to photo
M323	Plastic	white	Refer to photo
M324	Plastic + adhesive	white	Refer to photo
M325	Plastic	black	Refer to photo
M331	Plastic	black	Refer to photo
M332	Plastic	brown	Refer to photo
M333	Plastic	blue	Refer to photo
M334	Plastic	yellow	Refer to photo
M336	Plastic	white	Refer to photo
M339	Glue	transparent	Refer to photo
M340	Plastic	blue	Refer to photo
M342	Plastic	black	Refer to photo
M344	Plastic	white	Refer to photo
M345	Plastic	yellow	Refer to photo
M346	Plastic	green	Refer to photo
M347	Plastic	transparent	Refer to photo
M348	Plastic	black	Refer to photo
M352	Plastic	black	Refer to photo
M355-1	Plastic	black	Refer to photo
M356	Plastic	white	Refer to photo
M359	Textile + adhesive	grey	Refer to photo
M360	Plastic	black	Refer to photo
M361	Plastic	transparent	Refer to photo
M362	Plastic	black	Refer to photo
M363	Plastic	white	Refer to photo
M364	Plastic	transparent	Refer to photo
M369	Plastic	white	Refer to photo
M370	Glue	transparent	Refer to photo

**Test Report No.: 178200608d 001**

Page 7 of 44

M371	Plastic	red	Refer to photo
M372	Plastic	black	Refer to photo
M373	Plastic	black	Refer to photo
M375*	Plastic	black	Refer to photo
M376*	Plastic	black	Refer to photo
M379*	Plastic	transparent	Refer to photo
M391	Plastic	red	Refer to photo
M392	Coating	red	Refer to photo
M402	Plastic	black	Refer to photo
M403	Plastic	black	Refer to photo
M404	Plastic	black	Refer to photo
M434	Plastic	black	Refer to photo
M435	Plastic	black	Refer to photo
M437	Plastic	transparent	Refer to photo
M438	Plastic	black	Refer to photo
M439	Glue	black	Refer to photo
M443	Plastic	white	Refer to photo
M444	Plastic	white	Refer to photo
M446	Plastic	red	Refer to photo
M447	Plastic	black	Refer to photo
M448	Plastic	green	Refer to photo
M449	Plastic	yellow	Refer to photo
M450	Plastic	black	Refer to photo
M451	Plastic	black	Refer to photo
M453	Plastic	transparent	Refer to photo
M454	Plastic	black	Refer to photo
M455	Glue	black	Refer to photo
M459	Plastic	white	Refer to photo
M460	Plastic	black	Refer to photo
M461	Plastic	black	Refer to photo
M462	Plastic	red	Refer to photo
M463	Plastic	green	Refer to photo

**Test Report No.: 178200608d 001**

Page 8 of 44

M464	Plastic	yellow	Refer to photo
M466	Plastic	black	Refer to photo
M467	Plastic	red	Refer to photo
M468	Plastic	green	Refer to photo
M469	Plastic	black	Refer to photo
M471	Plastic	black	Refer to photo
M472	Plastic	black	Refer to photo
M473	Plastic	black	Refer to photo
M474	Plastic	transparent	Refer to photo
M475	Plastic	black	Refer to photo
M476	Plastic	white	Refer to photo
M477	PCB board	black	Refer to photo
M482	Plastic	black	Refer to photo
M484	PCB board	white	Refer to photo
M486	Plastic	black	Refer to photo
M487	Plastic	red	Refer to photo
M488	Plastic	black	Refer to photo
M490	Plastic	black	Refer to photo
M491	Plastic	black	Refer to photo
M492	Plastic	black	Refer to photo
M495	Plastic	red	Refer to photo
M496	Plastic	white	Refer to photo
M497	Plastic	black	Refer to photo
M499	PCB board	white	Refer to photo
M501	Plastic	black	Refer to photo
M502	Plastic	red	Refer to photo
M503	Plastic	black	Refer to photo
M505	Plastic	black	Refer to photo
M506	Plastic	black	Refer to photo
M509	Plastic	red	Refer to photo
M510	Plastic	black	Refer to photo
M511	Plastic	black	Refer to photo



**Test Report No.: 178200608d 001**

Page 9 of 44

M512	Plastic	black	Refer to photo
M513	Plastic	black	Refer to photo
M518	Plastic	black	Refer to photo
M519	Plastic	red	Refer to photo
M520	Plastic	white/grey	Refer to photo
M521	Plastic	green	Refer to photo
M522	Plastic	black	Refer to photo
M523	Plastic	red	Refer to photo
M527	Plastic	black	Refer to photo
M528	Plastic	red	Refer to photo
M529	Plastic	black	Refer to photo
M533	Plastic	transparent	Refer to photo
M535	Plastic	black	Refer to photo
M536	Foam + adhesive	black	Refer to photo
M537	Metal	coppery	Refer to photo
M539	PCB board	green	Refer to photo
M541	Plastic	blue	Refer to photo
M542	Plastic	grey	Refer to photo
M543	Plastic	black	Refer to photo
M544	Plastic	black	Refer to photo
M545	Plastic	white	Refer to photo
M546	Plastic	black	Refer to photo
M547	Plastic	white	Refer to photo
M548	Plastic	blue	Refer to photo
M549	Plastic	yellow	Refer to photo
M550	Plastic	green	Refer to photo
M551	Plastic	red	Refer to photo
M553	Plastic	black	Refer to photo
M559	Plastic	black	Refer to photo
M560	Plastic	black	Refer to photo
M561	Plastic	black	Refer to photo
M562	Plastic	red	Refer to photo

**Test Report No.: 178200608d 001**

Page 10 of 44

M563	Plastic	black	Refer to photo
M565	Plastic	red	Refer to photo
M566	Plastic	grey	Refer to photo
M567	Plastic	grey	Refer to photo
M568	Plastic	black	Refer to photo
M569	Plastic	black	Refer to photo
M577	Plastic	black	Refer to photo
M578	Plastic	black	Refer to photo
M579	Plastic	red	Refer to photo
M580	Plastic	blue	Refer to photo
M582	Glue	transparent	Refer to photo
M583	Plastic	white	Refer to photo
M585	Glue	black	Refer to photo
M586	PCB board	green	Refer to photo
M587	Glue	black	Refer to photo
M588	Plastic	black	Refer to photo
M589	Plastic + adhesive	grey	Refer to photo
M590	Plastic	black	Refer to photo
M591	Plastic	black	Refer to photo
M592	Plastic	grey	Refer to photo
M593	Plastic	black	Refer to photo
M594	Plastic	white/transparent	Refer to photo
M595	Plastic	yellow	Refer to photo
M596	Plastic + printing + adhesive	yellow/black	Refer to photo
M597	Plastic + printing + adhesive	black/grey	Refer to photo
M598	Plastic + printing + adhesive	red/black/yellow	Refer to photo
M602	Coating	blue	Refer to photo
M605	Plastic	blue	Refer to photo
M606	Coating	white	Refer to photo
M607	Coating	white	Refer to photo

**Test Report No.: 178200608d 001**

Page 11 of 44

M608	Coating	white	Refer to photo
M609	Glue	black	Refer to photo
M610	Glue	grey	Refer to photo
M611	Coating	grey	Refer to photo
M612	Plastic	black	Refer to photo
M630	Plastic	black	Refer to photo
M631	Coating	white	Refer to photo
M632	Coating	red	Refer to photo
M633	Coating	white	Refer to photo
M634	Coating	translucent	Refer to photo
M635	Coating	translucent	Refer to photo
M636	Coating	yellow	Refer to photo
M639	Coating	black	Refer to photo

Remark: The materials marked(\*) need not be shown in this report. However, the samples are composite sample containing the above marked materials, so they are still listed here.

**Test Report No.: 178200608d 001**

Page 12 of 44

**1.Short Chain Chlorinated Paraffin (C10-C13) (SCCP)**

Test Method: ref. to EN ISO 18219-1:2021/ ISO 18219-2:2021

**Test result:**

Test No.	Material No.	Test Parameter	Unit	RL	Regulatory Requirement	Result
T001	M001 + M167	SCCP	%	0.01	0.15	< RL
T002	M003 + M008 + M010	SCCP	%	0.01	0.15	< RL
T003	M004 + M013 + M019	SCCP	%	0.01	0.15	< RL
T004	M340 + M342	SCCP	%	0.01	0.15	< RL
T005	M011 + M012	SCCP	%	0.01	0.15	< RL
T006	M020 + M021	SCCP	%	0.01	0.15	< RL
T007	M046 + M047	SCCP	%	0.01	0.15	< RL
T008	M009 + M045 + M221	SCCP	%	0.01	0.15	< RL
T009	M043 + M044	SCCP	%	0.01	0.15	< RL
T010	M466 + M467	SCCP	%	0.01	0.15	< RL
T011	M056 + M094	SCCP	%	0.01	0.15	< RL
T012	M087 + M121	SCCP	%	0.01	0.15	< RL
T013	M086	SCCP	%	0.01	0.15	< RL
T014	M092 + M109	SCCP	%	0.01	0.15	< RL
T016	M347	SCCP	%	0.01	0.15	< RL
T018	M287 + M319	SCCP	%	0.01	0.15	< RL
T020	M099 + M130 + M136	SCCP	%	0.01	0.15	< RL
T021	M100 + M101 + M102	SCCP	%	0.01	0.15	< RL
T022	M103 + M104	SCCP	%	0.01	0.15	< RL
T023	M127	SCCP	%	0.01	0.15	< RL
T024	M110 + M126	SCCP	%	0.01	0.15	< RL
T025	M111 + M114 + M116	SCCP	%	0.01	0.15	< RL
T026	M115 + M118 + M119	SCCP	%	0.01	0.15	< RL
T027	M137 + M149	SCCP	%	0.01	0.15	< RL
T028	M124 + M298	SCCP	%	0.01	0.15	< RL
T029	M128	SCCP	%	0.01	0.15	< RL
T031	M138	SCCP	%	0.01	0.15	< RL
T032	M139 + M140 + M141	SCCP	%	0.01	0.15	< RL
T033	M143 + M144 + M145	SCCP	%	0.01	0.15	< RL
T034	M147 + M184 + M188	SCCP	%	0.01	0.15	< RL
T035	M148 + M155 + M248	SCCP	%	0.01	0.15	< RL
T036	M152 + M153 + M154	SCCP	%	0.01	0.15	< RL
T037	M172 + M299	SCCP	%	0.01	0.15	< RL
T038	M173	SCCP	%	0.01	0.15	< RL
T039	M187 + M199 + M202	SCCP	%	0.01	0.15	< RL
T041	M217 + M244	SCCP	%	0.01	0.15	< RL
T042	M252 + M257 + M260	SCCP	%	0.01	0.15	< RL
T043	M264 + M251 + M295	SCCP	%	0.01	0.15	0.036
T044	M265 + M300 + M314	SCCP	%	0.01	0.15	< RL
T045	M284	SCCP	%	0.01	0.15	< RL
T046	M274 + M312 + M339	SCCP	%	0.01	0.15	< RL

**Test Report No.: 178200608d 001**

Page 13 of 44

T047	M283 + M292 + M293	SCCP	%	0.01	0.15	< RL
T048	M294 + M323	SCCP	%	0.01	0.15	< RL
T049	M305 + M307	SCCP	%	0.01	0.15	< RL
T050	M316 + M317 + M322	SCCP	%	0.01	0.15	< RL
T051	M325 + M331 + M324	SCCP	%	0.01	0.15	< RL
T052	M332 + M333 + M334	SCCP	%	0.01	0.15	< RL
T053	M336 + M014 + M025	SCCP	%	0.01	0.15	< RL
T054	M320 + M344	SCCP	%	0.01	0.15	< RL
T055	M356 + M041	SCCP	%	0.01	0.15	< RL
T056	M134 + M156	SCCP	%	0.01	0.15	< RL
T057	M105 + M106 + M107	SCCP	%	0.01	0.15	< RL
T058	M125 + M117 + M203	SCCP	%	0.01	0.15	< RL
T059	M023 + M027 + M034	SCCP	%	0.01	0.15	< RL
T060	M131 + M132 + M133	SCCP	%	0.01	0.15	< RL
T061	M392	SCCP	%	0.01	0.15	< RL
T062	M054 + M055	SCCP	%	0.01	0.15	< RL
T063	M345 + M346	SCCP	%	0.01	0.15	< RL
T064	M468 + M469	SCCP	%	0.01	0.15	< RL
T066	M236	SCCP	%	0.01	0.15	0.13
T067	M348	SCCP	%	0.01	0.15	< RL
T068	M352	SCCP	%	0.01	0.15	< RL
T070	M373	SCCP	%	0.01	0.15	< RL
T071	M359	SCCP	%	0.01	0.15	< RL
T072	M360 + M361 + M363	SCCP	%	0.01	0.15	< RL
T073	M364 + M376* + M379*	SCCP	%	0.01	0.15	< RL
T076	M402 + M403	SCCP	%	0.01	0.15	< RL
T077	M375* + M391 + M404	SCCP	%	0.01	0.15	< RL
T079	M362 + M371 + M372	SCCP	%	0.01	0.15	< RL
T080	M369	SCCP	%	0.01	0.15	< RL
T082	M463 + M464	SCCP	%	0.01	0.15	< RL
T083	M460 + M461 + M462	SCCP	%	0.01	0.15	< RL
T084	M454 + M459	SCCP	%	0.01	0.15	< RL
T085	M450 + M451 + M453	SCCP	%	0.01	0.15	< RL
T086	M448 + M449	SCCP	%	0.01	0.15	< RL
T087	M444 + M446 + M447	SCCP	%	0.01	0.15	< RL
T088	M438	SCCP	%	0.01	0.15	< RL
T089	M434 + M435 + M437	SCCP	%	0.01	0.15	< RL
T090	M094 + M095	SCCP	%	0.01	0.15	< RL
T091	M096 + M097	SCCP	%	0.01	0.15	< RL
T092	M355-1	SCCP	%	0.01	0.15	< RL
T093	M471 + M512 + M513	SCCP	%	0.01	0.15	< RL
T094	M443	SCCP	%	0.01	0.15	< RL
T095	M527 + M528 + M529	SCCP	%	0.01	0.15	< RL
T096	M535 + M553 + M559	SCCP	%	0.01	0.15	< RL
T097	M560 + M561 + M562	SCCP	%	0.01	0.15	< RL
T098	M563 + M565 + M566	SCCP	%	0.01	0.15	< RL
T099	M474 + M475 + M511	SCCP	%	0.01	0.15	< RL

**Test Report No.: 178200608d 001**

Page 14 of 44

T100	M567	SCCP	%	0.01	0.15	< RL
T101	M472 + M476 + M533	SCCP	%	0.01	0.15	< RL
T102	M473 + M482 + M492	SCCP	%	0.01	0.15	< RL
T103	M486 + M487 + M488	SCCP	%	0.01	0.15	< RL
T104	M491 + M518 + M543	SCCP	%	0.01	0.15	< RL
T105	M495 + M509	SCCP	%	0.01	0.15	< RL
T106	M490 + M497 + M501	SCCP	%	0.01	0.15	< RL
T107	M502 + M503 + M510	SCCP	%	0.01	0.15	< RL
T108	M521 + M522 + M523	SCCP	%	0.01	0.15	< RL
T109	M519 + M520 + M545	SCCP	%	0.01	0.15	< RL
T110	M541 + M542	SCCP	%	0.01	0.15	< RL
T111	M477 + M484 + M499	SCCP	%	0.01	0.15	< RL
T112	M505 + M506 + M544	SCCP	%	0.01	0.15	< RL
T113	M546 + M547 + M548	SCCP	%	0.01	0.15	< RL
T114	M549 + M550 + M551	SCCP	%	0.01	0.15	< RL
T115	M539	SCCP	%	0.01	0.15	< RL
T116	M560 + M561 + M562	SCCP	%	0.01	0.15	< RL
T117	M223-1	SCCP	%	0.01	0.15	< RL
T118	M569	SCCP	%	0.01	0.15	< RL
T120	M578 + M579 + M580	SCCP	%	0.01	0.15	< RL
T121	M577 + M583 + M587	SCCP	%	0.01	0.15	< RL
T122	M582 + M585 + M586	SCCP	%	0.01	0.15	< RL
T123	M589 + M590 + M591	SCCP	%	0.01	0.15	< RL
T124	M592 + M594 + M595	SCCP	%	0.01	0.15	< RL
T125	M596 + M597 + M598	SCCP	%	0.01	0.15	< RL
T126	M588 + M593	SCCP	%	0.01	0.15	< RL
T127	M602	SCCP	%	0.01	0.15	< RL
T128	M605	SCCP	%	0.01	0.15	< RL
T129	M606 + M607 + M608 + M611	SCCP	%	0.01	0.15	< RL
T130	M609 + M610	SCCP	%	0.01	0.15	< RL
T131	M612	SCCP	%	0.01	0.15	< RL
T132	M630	SCCP	%	0.01	0.15	< RL
T133	M631 + M632	SCCP	%	0.01	0.15	< RL
T134	M633	SCCP	%	0.01	0.15	< RL
T135	M634 + M635	SCCP	%	0.01	0.15	< RL
T136	M636	SCCP	%	0.01	0.15	< RL
T137	M639	SCCP	%	0.01	0.15	< RL

**Abbreviation:** < = less than  
 RL = Report Limit  
 SCCP = Short Chain Chlorinated Paraffin (C<sub>10</sub>-C<sub>13</sub>)  
 % = percentage

**Test Report No.: 178200608d 001**

Page 15 of 44

**Remark:**

\* According to Regulation (EU) 2019/1021 as regards Annex I:

Alkanes C <sub>10</sub> -C <sub>13</sub> , chloro (short-chain chlorinated paraffins) (SCCPs)	Maximum Permissible Limit
The production , placing on the market and use of articles containing SCCPs	< 0.15% by weight
The production , placing on the market and use of substances or preparations containing SCCPs	< 1% by weight

**Test Report No.: 178200608d 001**

Page 16 of 44

**2. Total Bromine screening**

Test Method: ref. to IEC 62321-3-1:2013

**Test Results:**

Material No.	Total Br
M001	BL
M003	BL
M004	BL
M008	BL
M009	BL
M010	BL
M011	BL
M012	BL
M013	BL
M014	d.(*1)
M019	d.(*1)
M020	BL
M021	BL
M023	BL
M025	BL
M027	BL
M034	BL
M043	BL
M044	BL
M045	BL
M046	BL
M047	BL
M054	BL
M055	BL
M086	BL
M087	BL
M092	BL
M099	BL
M100	BL
M101	BL
M102	BL
M103	BL
M104	BL
M105	BL
M106	BL
M107	BL
M109	BL
M110	BL
M111	BL
M114	BL
M115	BL



**Test Report No.: 178200608d 001**

Page 17 of 44

M116	d.(*1)
M117	d.(*1)
M118	BL
M119	BL
M121	BL
M124	d.(*1)
M125	BL
M126	BL
M127	BL
M128	BL
M130	BL
M131	BL
M132	BL
M133	BL
M134	BL
M136	BL
M137	BL
M138	BL
M139	BL
M140	BL
M141	BL
M143	BL
M144	BL
M145	BL
M147	BL
M148	d.(*1)
M149	d.(*1)
M152	BL
M153	BL
M154	BL
M155	BL
M156	BL
M166	BL
M167	BL
M168	BL
M169	BL
M172	BL
M173	BL
M184	BL
M187	BL
M188	BL
M199	BL
M202	BL
M203	BL
M217	BL
M221	BL
M236	BL

**Test Report No.: 178200608d 001**

Page 18 of 44

M244	d.(*1)
M248	d.(*1)
M251	BL
M252	BL
M256	BL
M257	BL
M260	d.(*1)
M264	BL
M265	BL
M272	BL
M274	BL
M282	BL
M283	BL
M284	BL
M287	d.(*1)
M295	BL
M298	BL
M299	BL
M300	BL
M305	BL
M307	BL
M312	BL
M314	BL
M316	BL
M317	d.(*1)
M319	d.(*1)
M320	BL
M322	BL
M323	d.(*1)
M324	BL
M325	BL
M331	BL
M332	BL
M333	BL
M334	BL
M336	d.(*1)
M339	BL
M041	d.(*1)
M340	BL
M342	BL
M344	BL
M345	BL
M346	BL
M347	BL
M348	BL
M352	d.(*1)
M356	BL

**Test Report No.: 178200608d 001**

Page 19 of 44

M359	BL
M360	BL
M361	BL
M362	BL
M363	BL
M364	BL
M369	BL
M370	BL
M371	BL
M372	BL
M373	BL
M391	BL
M392	BL
M403	BL
M404	BL
M434	BL
M435	BL
M437	BL
M438	BL
M439	BL
M443	BL
M444	BL
M446	BL
M447	BL
M448	BL
M449	BL
M450	BL
M451	BL
M453	BL
M454	BL
M455	BL
M459	BL
M460	BL
M461	BL
M462	BL
M463	BL
M464	BL
M094	BL
M095	BL
M096	BL
M097	BL
M355-1	BL
M466	BL
M467	BL
M468	BL
M469	BL
M471	BL

**Test Report No.: 178200608d 001**

Page 20 of 44

M472	BL
M473	d.(*1)
M474	BL
M475	d.(*1)
M476	BL
M477	d.(*1)
M482	d.(*1)
M484	d.(*1)
M486	BL
M487	BL
M488	BL
M490	BL
M491	d.(*1)
M492	BL
M495	d.(*1)
M496	BL
M497	d.(*1)
M499	d.(*1)
M501	BL
M502	BL
M505	BL
M506	BL
M509	d.(*1)
M510	BL
M511	BL
M512	BL
M513	BL
M518	BL
M519	d.(*1)
M520	BL
M521	BL
M522	BL
M523	BL
M527	BL
M528	BL
M529	BL
M533	d.(*1)
M535	BL
M536	BL
M537	BL
M539	d.(*1)
M541	BL
M542	BL
M543	BL
M544	BL
M545	BL
M546	BL

**Test Report No.: 178200608d 001**

Page 21 of 44

M547	BL
M548	BL
M549	BL
M550	BL
M551	BL
M553	BL
M559	BL
M560	d.(*1)
M561	BL
M562	BL
M563	BL
M565	BL
M566	BL
M567	BL
M568	BL
M503	BL
M569	BL
M577	BL
M578	BL
M579	BL
M580	BL
M582	BL
M583	BL
M585	BL
M586	d.(*1)
M587	BL
M588	BL
M589	BL
M590	BL
M591	BL
M592	BL
M593	BL
M594	BL
M595	BL
M596	BL
M597	BL
M598	BL
M602	BL
M605	BL
M606	BL
M607	BL
M608	BL
M609	BL
M610	BL
M611	BL
M612	BL
M630	BL

**Test Report No.: 178200608d 001**

Page 22 of 44

M631	BL
M632	BL
M633	BL
M634	BL
M635	BL
M636	BL
M292	BL
M293	BL
M294	BL
M056	BL
M639	BL

**Abbreviation:** Br = Bromine  
 BL= Below limit  
 OL= Over limit  
 d.= detected

**Remark:**

\*1 The screening result was detected in the inconclusive region or over limits, thus the HBCDD content shall be further confirmed.

Recommended XRF Screening limits in mg/kg for Bromine (Br) test:

ELEMENT	Concentration (mg/kg)
Br	BL < 50-3σ < X

Remark: The symbol "X" marks the region where further investigation is necessary.

**Test Report No.: 178200608d 001**

Page 23 of 44

**Hexabromocyclododecane (HBCDD) content confirmation**

Test Method: Organic solvent extraction, analyzed by GCMS

Test No.				T001	T002	T003
Material No.				M014	M019	M041
Test Parameter	CAS NO	Unit	RL	Result	Result	Result
Hexabromocyclododecane (HBCDD)	25637-99-4	mg/kg	10	< RL	< RL	< RL

Test No.				T004	T005	T006
Material No.				M116	M117	M124
Test Parameter	CAS NO	Unit	RL	Result	Result	Result
Hexabromocyclododecane (HBCDD)	25637-99-4	mg/kg	10	< RL	< RL	< RL

Test No.				T007	T008	T009
Material No.				M148	M149	M223-1
Test Parameter	CAS NO	Unit	RL	Result	Result	Result
Hexabromocyclododecane (HBCDD)	25637-99-4	mg/kg	10	< RL	< RL	< RL

Test No.				T010	T011	T012
Material No.				M244	M248	M260
Test Parameter	CAS NO	Unit	RL	Result	Result	Result
Hexabromocyclododecane (HBCDD)	25637-99-4	mg/kg	10	< RL	< RL	< RL

Test No.				T013	T014	T015
Material No.				M287	M317	M319
Test Parameter	CAS NO	Unit	RL	Result	Result	Result
Hexabromocyclododecane (HBCDD)	25637-99-4	mg/kg	10	< RL	< RL	< RL

Test No.				T016	T017	T018
Material No.				M323	M336	M352
Test Parameter	CAS NO	Unit	RL	Result	Result	Result
Hexabromocyclododecane (HBCDD)	25637-99-4	mg/kg	10	< RL	< RL	< RL

Test No.				T019	T020	T021
Material No.				M473	M475	M477
Test Parameter	CAS NO	Unit	RL	Result	Result	Result
Hexabromocyclododecane (HBCDD)	25637-99-4	mg/kg	10	< RL	< RL	< RL

Test No.				T022	T023	T024
Material No.				M482	M484	M491
Test Parameter	CAS NO	Unit	RL	Result	Result	Result
Hexabromocyclododecane (HBCDD)	25637-99-4	mg/kg	10	< RL	< RL	< RL

Test No.				T025	T026	T027
Material No.				M495	M497	M499
Test Parameter	CAS NO	Unit	RL	Result	Result	Result
Hexabromocyclododecane (HBCDD)	25637-99-4	mg/kg	10	< RL	< RL	< RL

**Test Report No.: 178200608d 001**

Page 24 of 44

Test No.				T028	T029	T030
Material No.				M509	M519	M533
Test Parameter	CAS NO	Unit	RL	Result	Result	Result
Hexabromocyclododecane (HBCDD)	25637-99-4	mg/kg	10	< RL	< RL	< RL

Test No.				T031	T032	T033
Material No.				M539	M560	M586
Test Parameter	CAS NO	Unit	RL	Result	Result	Result
Hexabromocyclododecane (HBCDD)	25637-99-4	mg/kg	10	< RL	< RL	< RL

**Abbreviation:** < = less than  
 RL = Reporting Limit  
 mg/kg = milligram per kilogram

**Remark:**

\* Regulation (EU) 2019/1021 as regards Annex I:

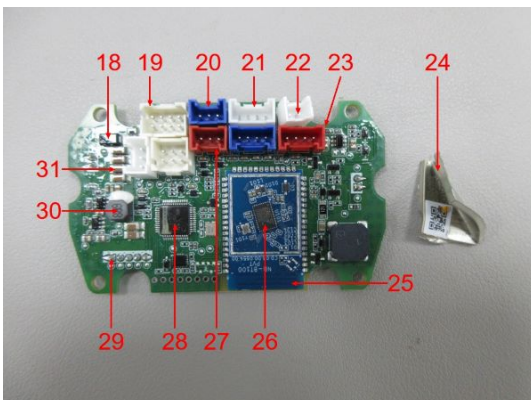
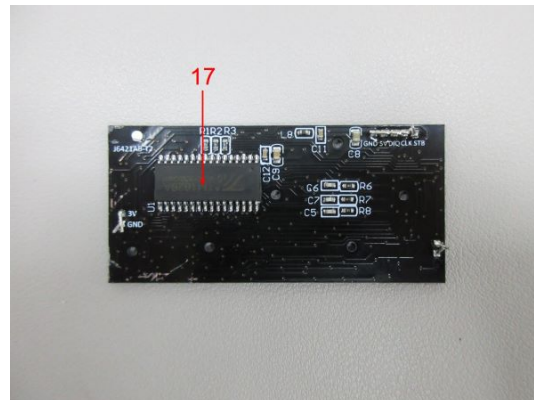
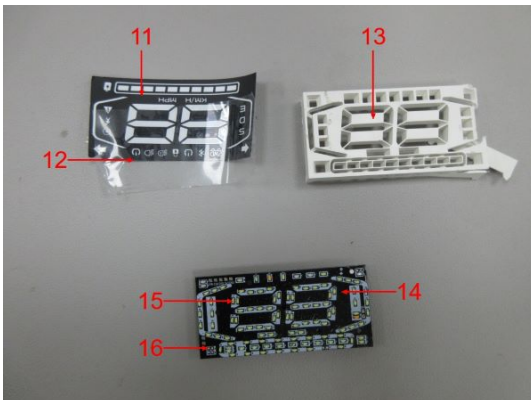
<b>Hexabromocyclododecane</b>	<b>Maximum Permissible Limit</b>
In substances, preparations, articles or as constituents of the flame-retarded parts of articles	≤100 mg/kg (0.01% by weight); subject to review by the Commission by 22 March 2019



**Test Report No.: 178200608d 001**

Page 25 of 44

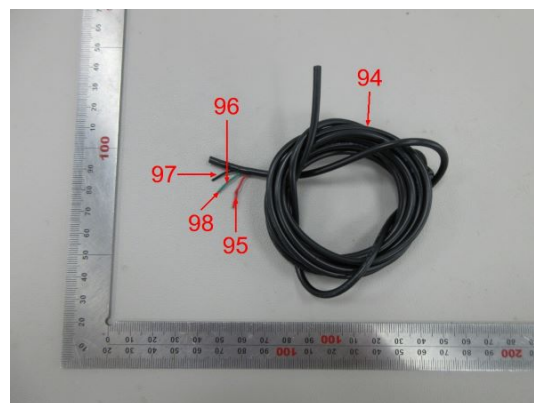
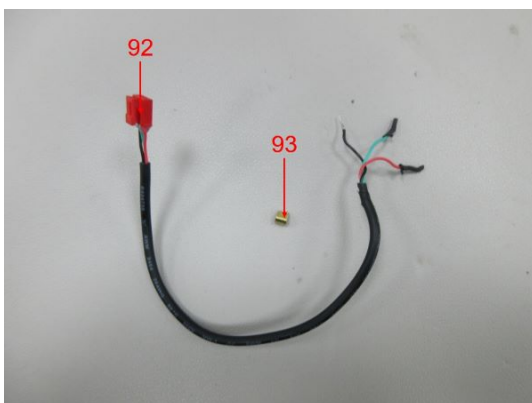
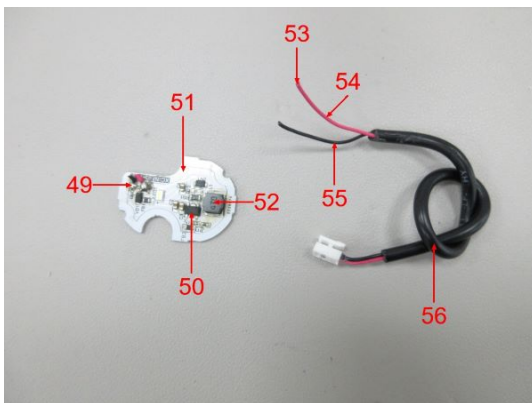
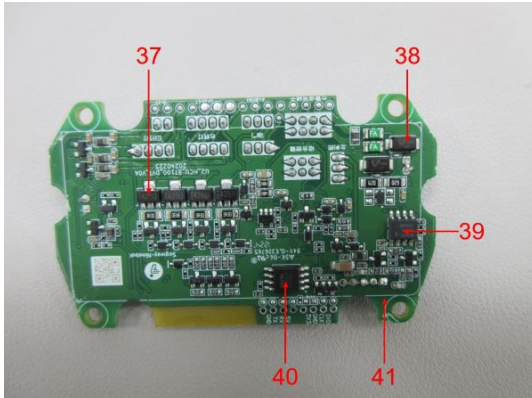
Sample Photos



**Test Report No.: 178200608d 001**

Page 26 of 44

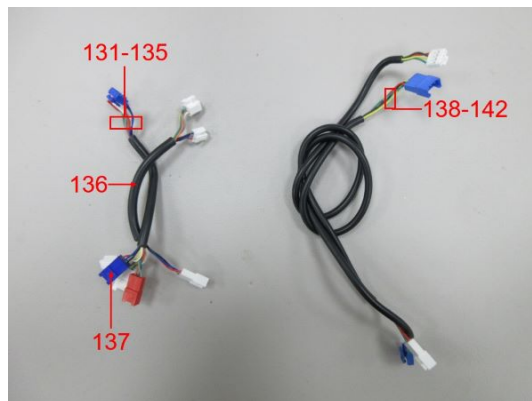
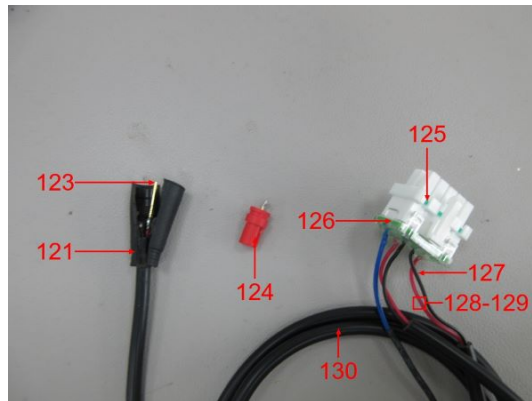
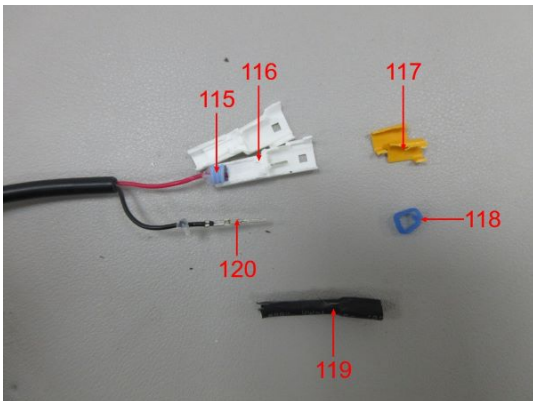
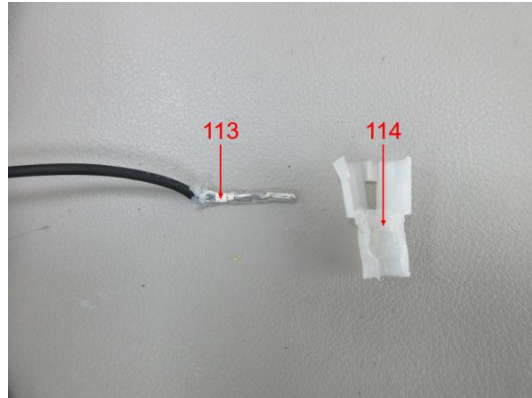
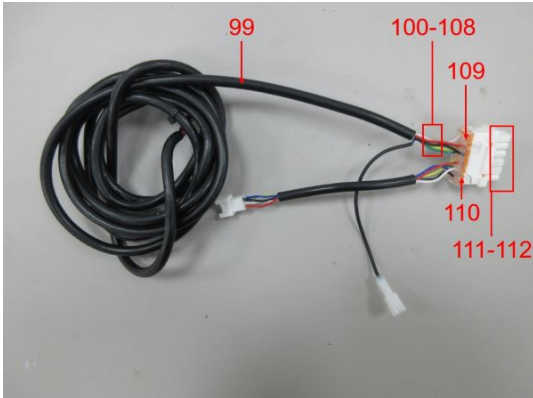
Sample Photos



**Test Report No.: 178200608d 001**

Page 27 of 44

Sample Photos





**Test Report No.: 178200608d 001**

Page 28 of 44

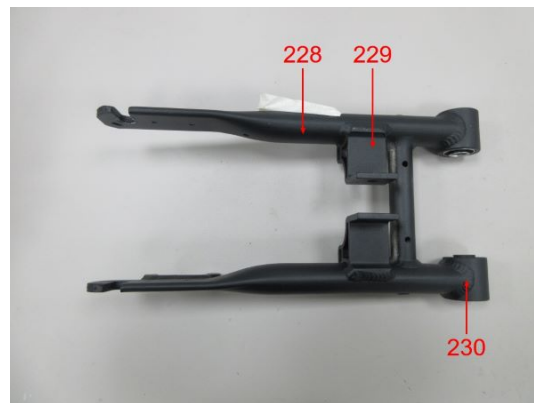
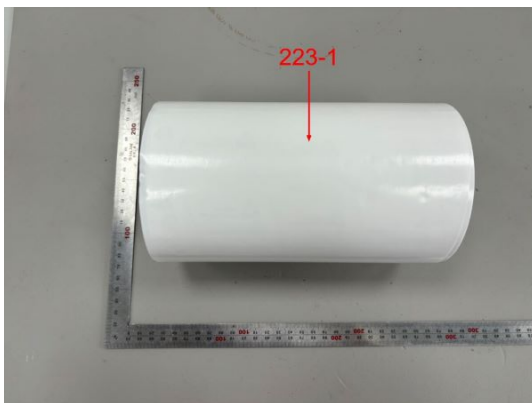
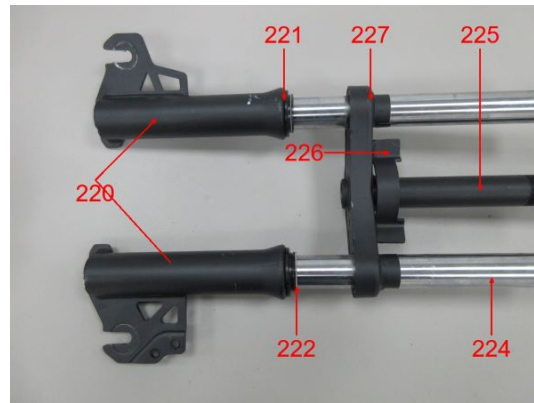
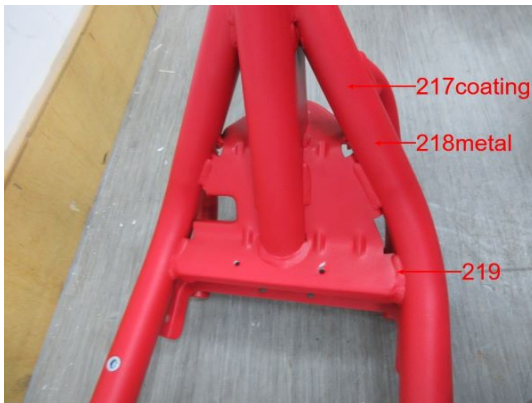
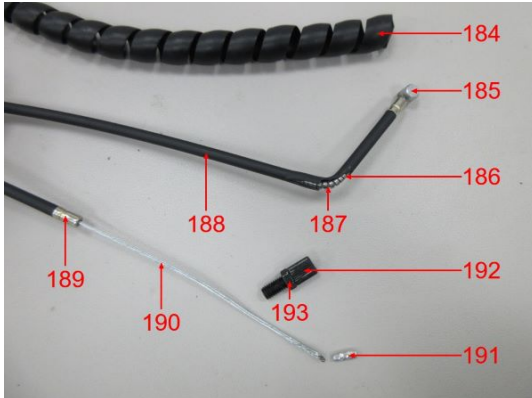
## Sample Photos



**Test Report No.: 178200608d 001**

Page 29 of 44

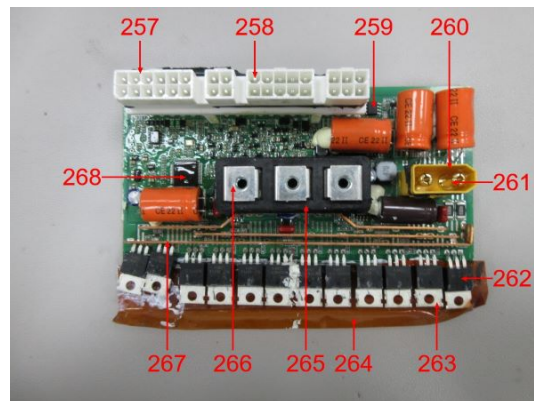
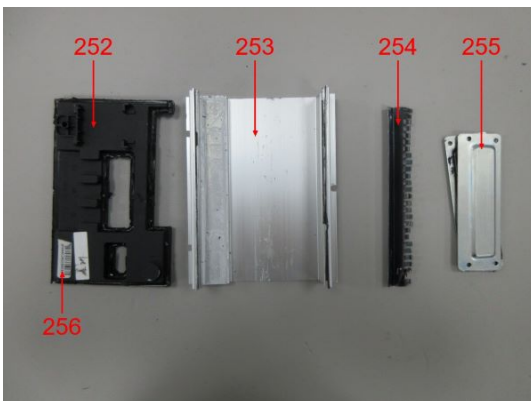
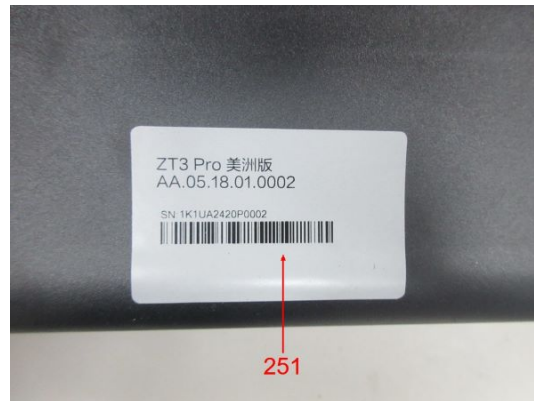
Sample Photos



**Test Report No.: 178200608d 001**

Page 30 of 44

Sample Photos

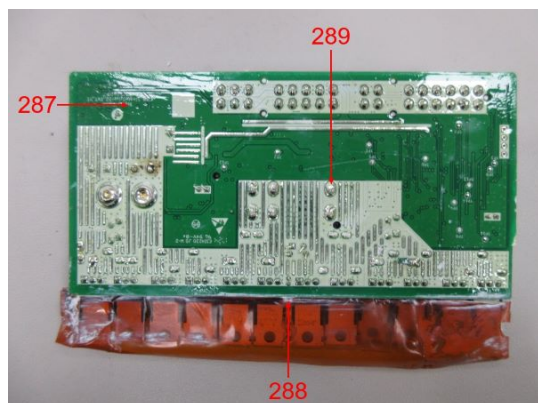
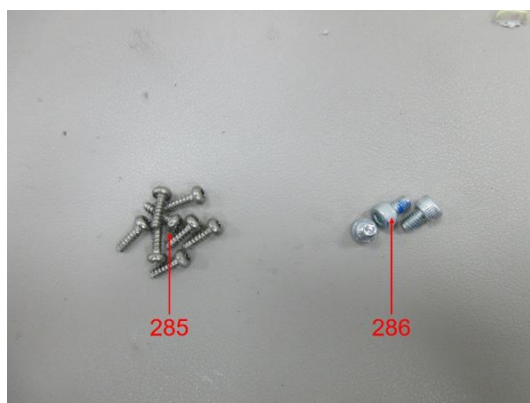
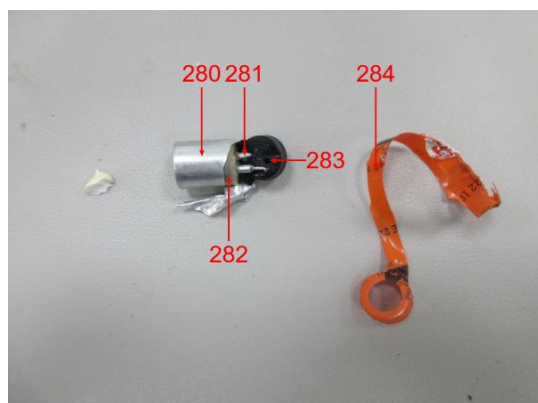
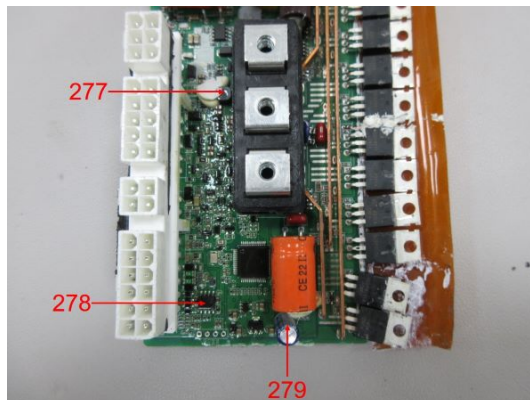
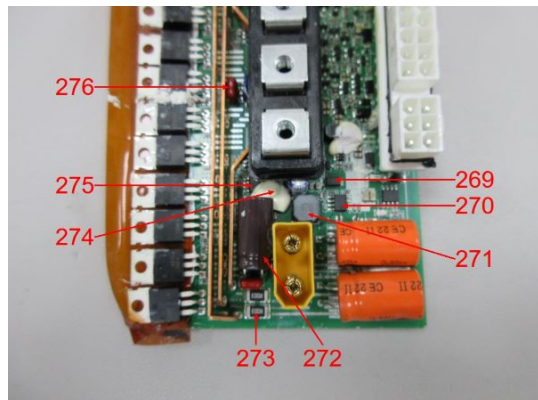




**Test Report No.: 178200608d 001**

Page 31 of 44

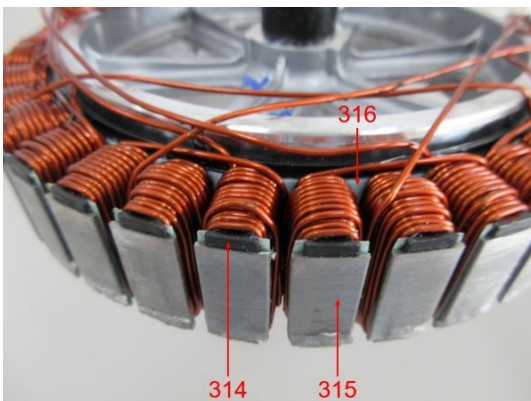
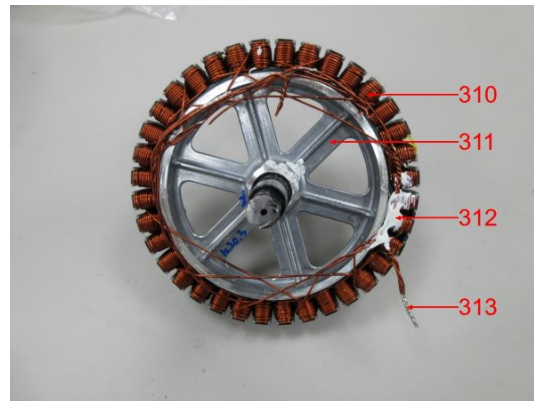
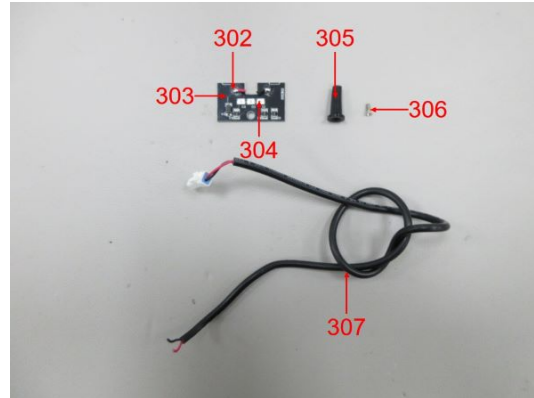
Sample Photos



**Test Report No.: 178200608d 001**

Page 32 of 44

Sample Photos

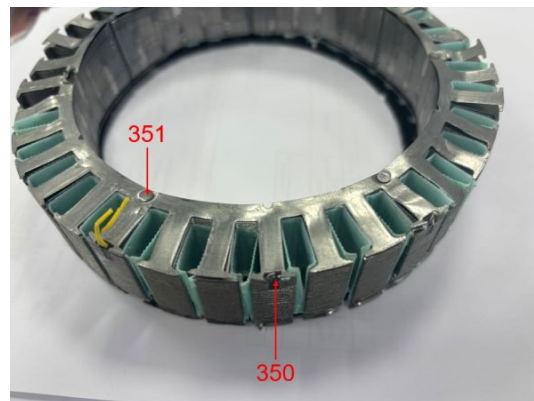
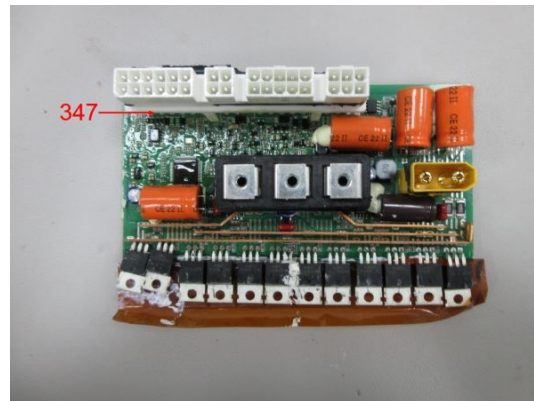
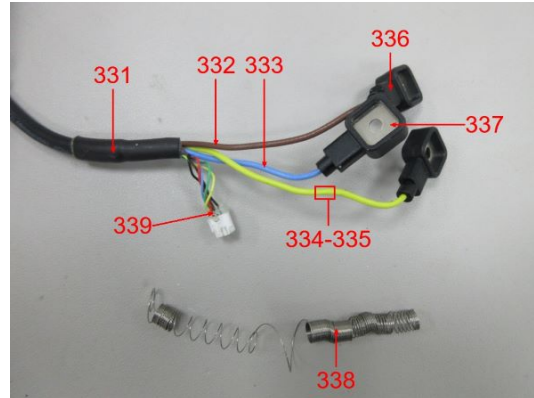




**Test Report No.: 178200608d 001**

Page 33 of 44

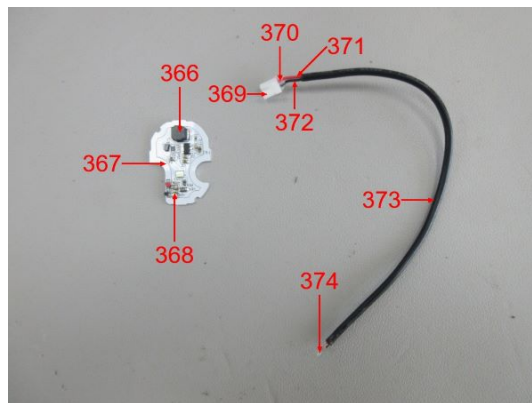
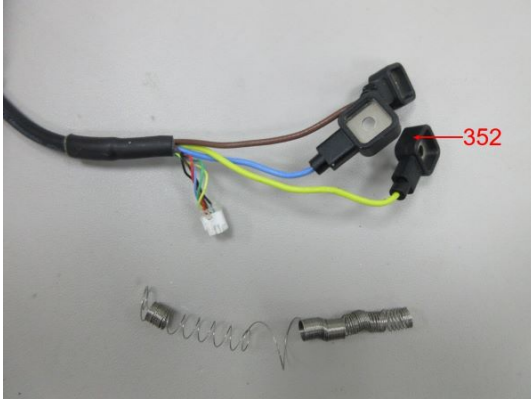
Sample Photos



**Test Report No.: 178200608d 001**

Page 34 of 44

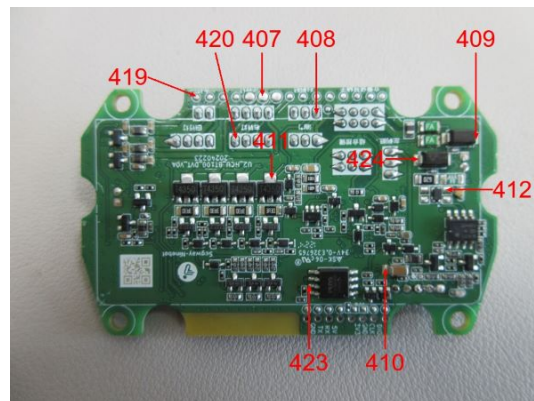
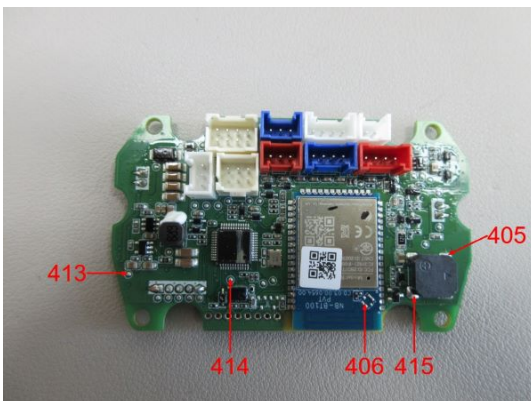
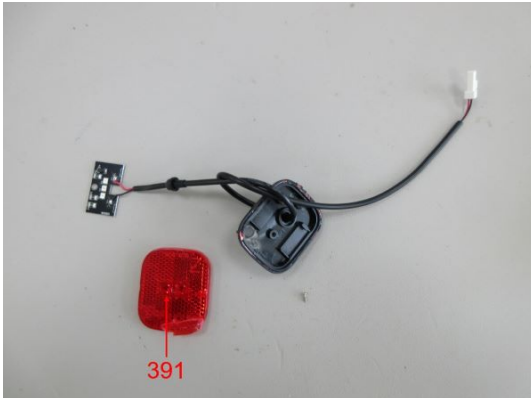
Sample Photos



**Test Report No.: 178200608d 001**

Page 35 of 44

Sample Photos

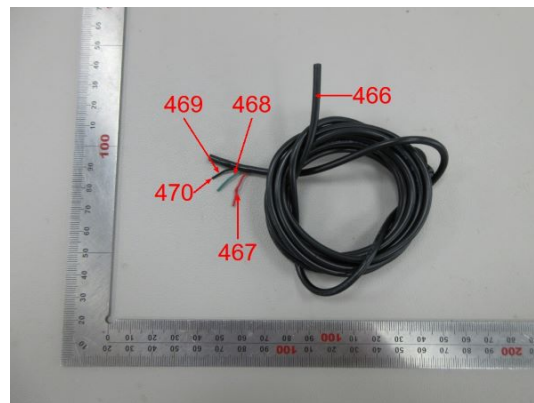
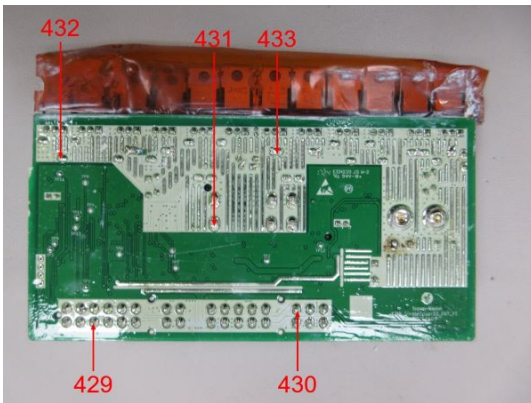
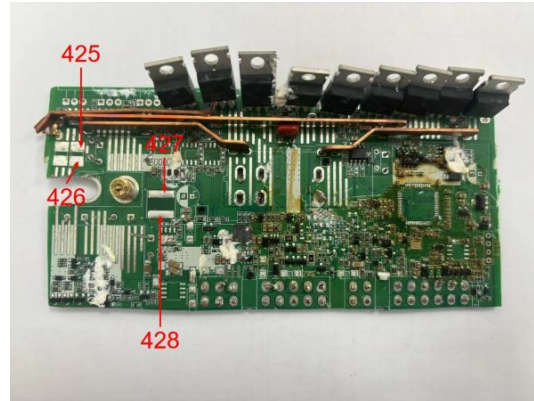




**Test Report No.: 178200608d 001**

Page 36 of 44

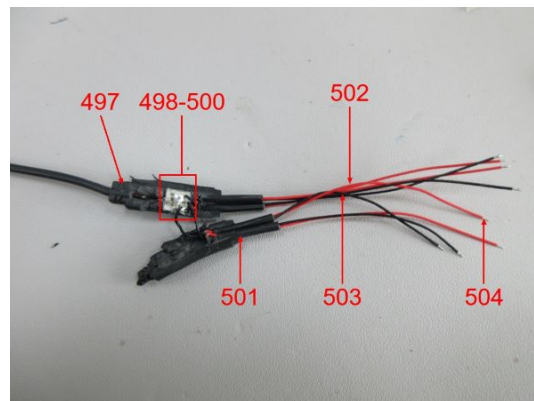
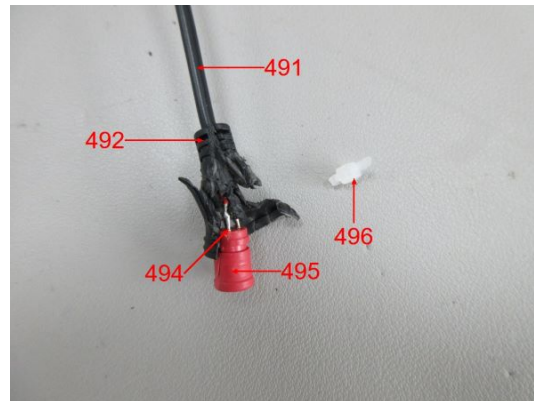
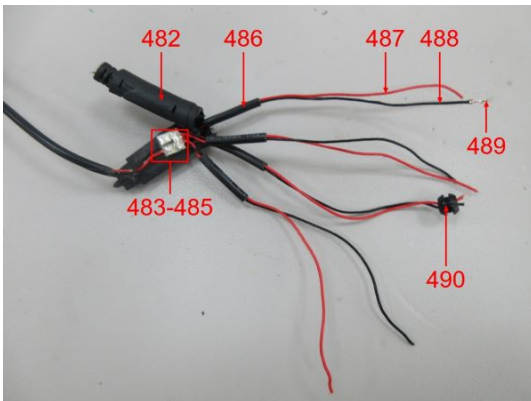
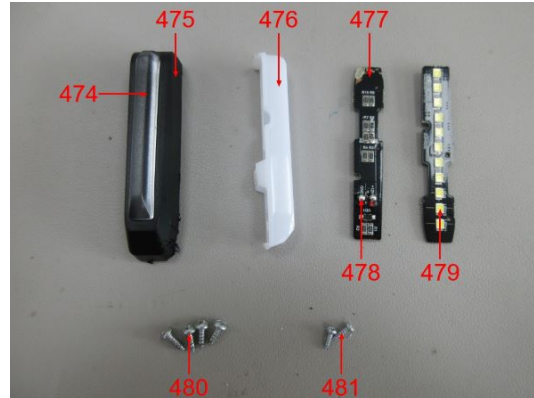
Sample Photos



**Test Report No.: 178200608d 001**

Page 37 of 44

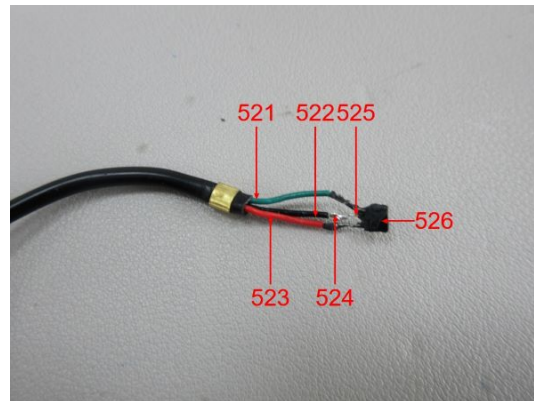
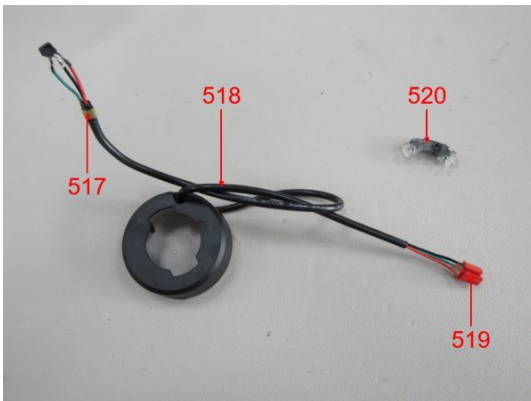
Sample Photos



**Test Report No.: 178200608d 001**

Page 38 of 44

Sample Photos

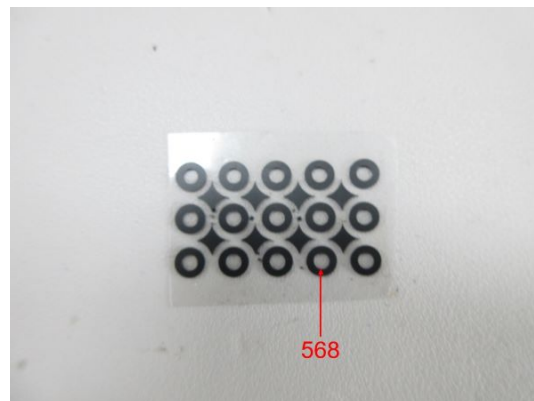
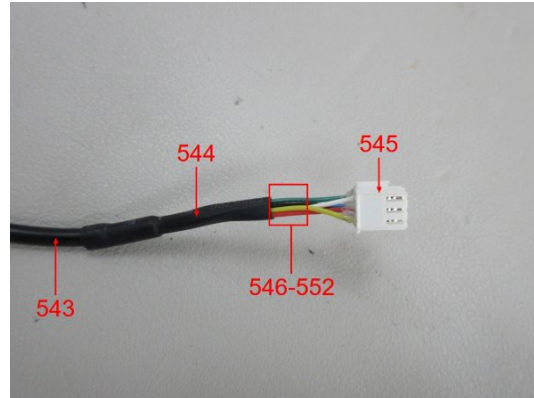
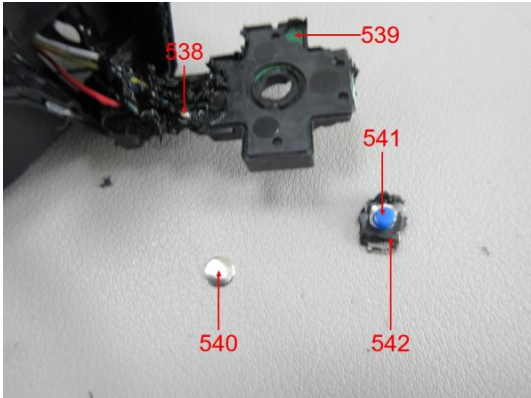




**Test Report No.: 178200608d 001**

Page 39 of 44

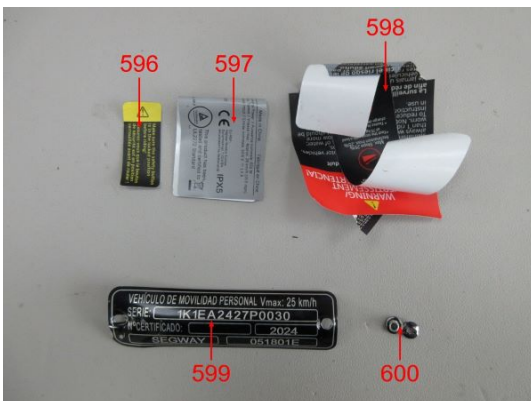
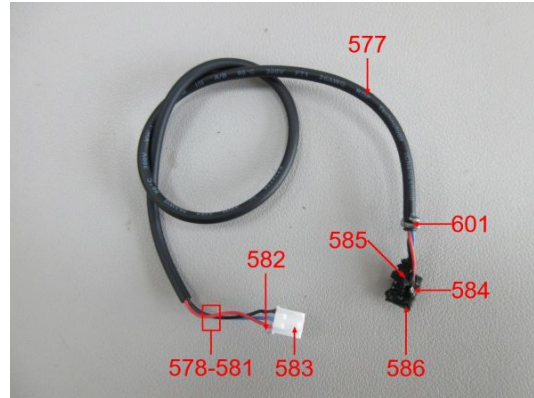
Sample Photos



**Test Report No.: 178200608d 001**

Page 40 of 44

Sample Photos

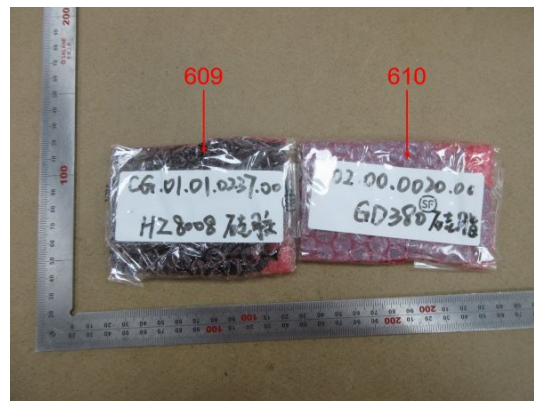
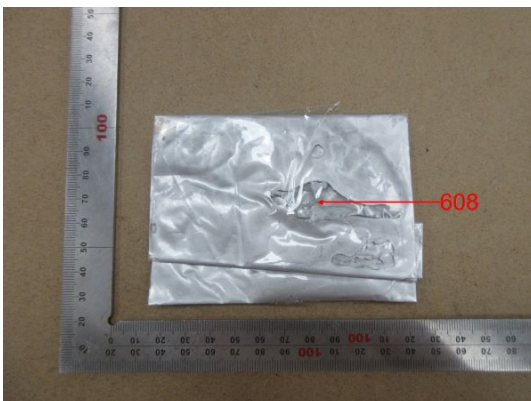
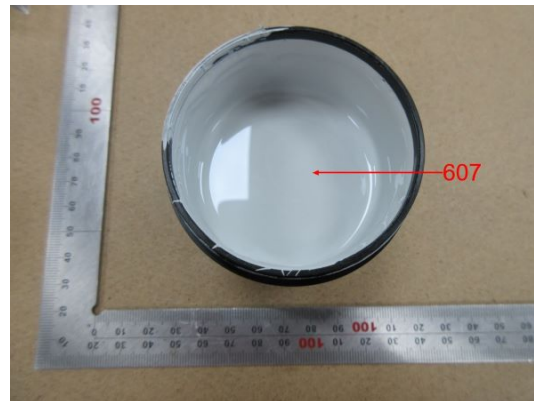
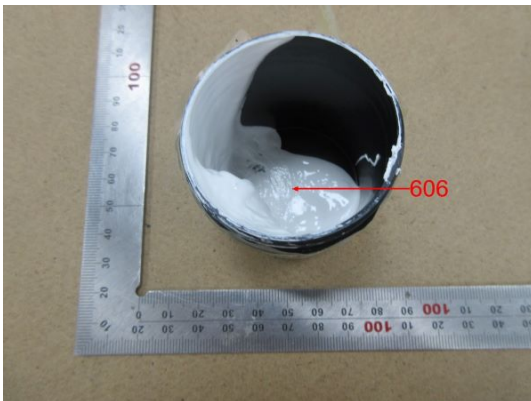
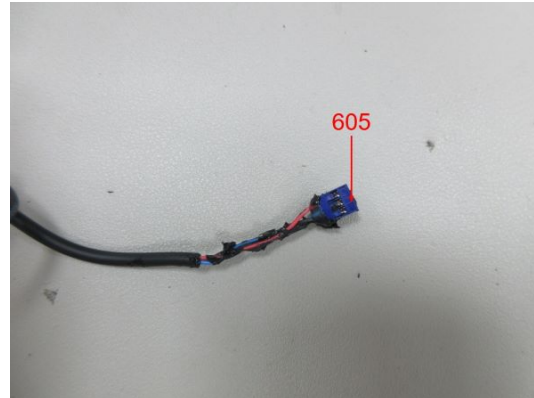
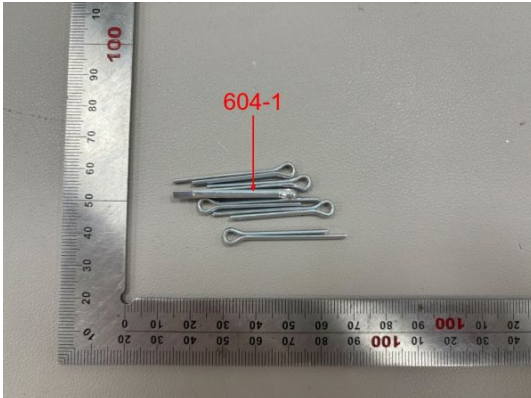




**Test Report No.: 178200608d 001**

Page 41 of 44

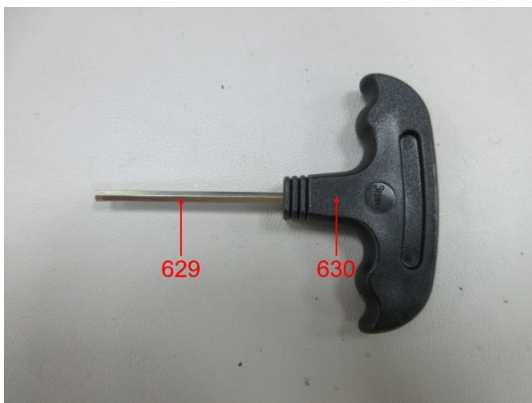
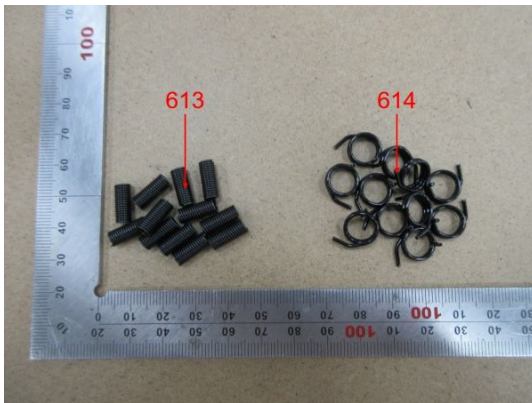
Sample Photos



**Test Report No.: 178200608d 001**

Page 42 of 44

Sample Photos

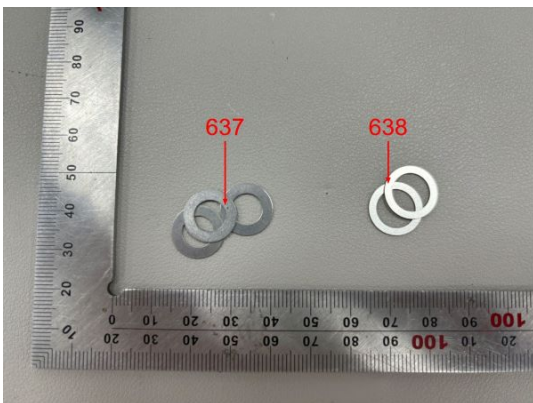
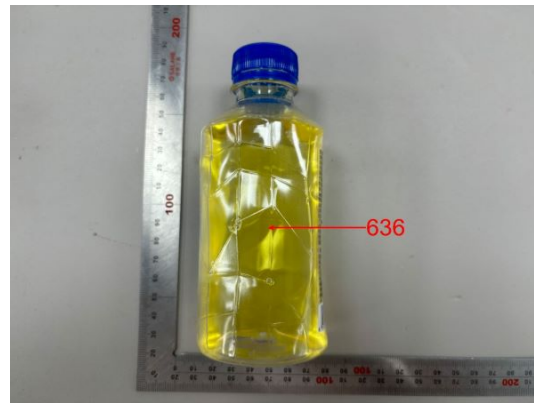
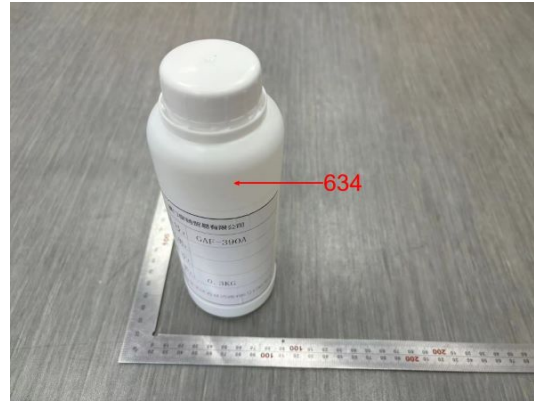




**Test Report No.: 178200608d 001**

Page 43 of 44

Sample Photos



**Test Report No.: 178200608d 001**

Page 44 of 44

Sample Photo



- END -

